



NAV Client
Starter

NAV Client Starter

4BzSoftware Company Limited | Product S-06

Released on 2015-07-25, last updated on 2017-01-20

4BZSoftware

Table of Contents

1. Introduction	1
2. How to install	2
2.1 Prerequisite.....	2
2.2 Installation	2
2.3 Try Tool with Trial License	2
2.4 Product License Process.....	4
2.5 Get ID of PC.....	4
2.6 Import Product/Trial License file	5
2.7 Backup Product/Trial License file.....	5
3. How to use	6
3.1 Create Startup for NAV Windows Client.....	6
3.2 Create Startup for NAV Web Client	11
3.3 Create Startup for NAV Development/SQL Client	12
3.4 Create Startup for NAV Native Client	14
3.5 Check Server Port Availability	15
3.6 Copy & Paste Startups	16
3.7 Drag & Drop Files/Folders.....	17
3.8 Open File/Folder Location	18
3.9 Filter Startups.....	19
3.10 Use Predefined Patterns	20
3.11 Take Note in Edit Startup Parameters	22
3.12 Open any File, Folder or Website	22
3.13 Run any Application with/without Startup Parameters	22
3.14 Run Application with Startup Parameter Selection	23
3.15 Run Command	24
3.16 Run Command or Startup as Different User, Administrator	25
3.17 Common Windows Commands	26
3.18 Special Paths	26
3.19 Activate application anywhere by pressing Alt+4 keys.....	26
3.20 Autorun Mode for End Users with multiple backup connections	27
3.21 License Reminder Setting.....	29
3.22 Save Application Data	30
4. Technical Point of View	31

4.1	Troubleshoot.....	31
4.2	Version Control	32
5.	Pricing	33

4BZSoftware

1. Introduction

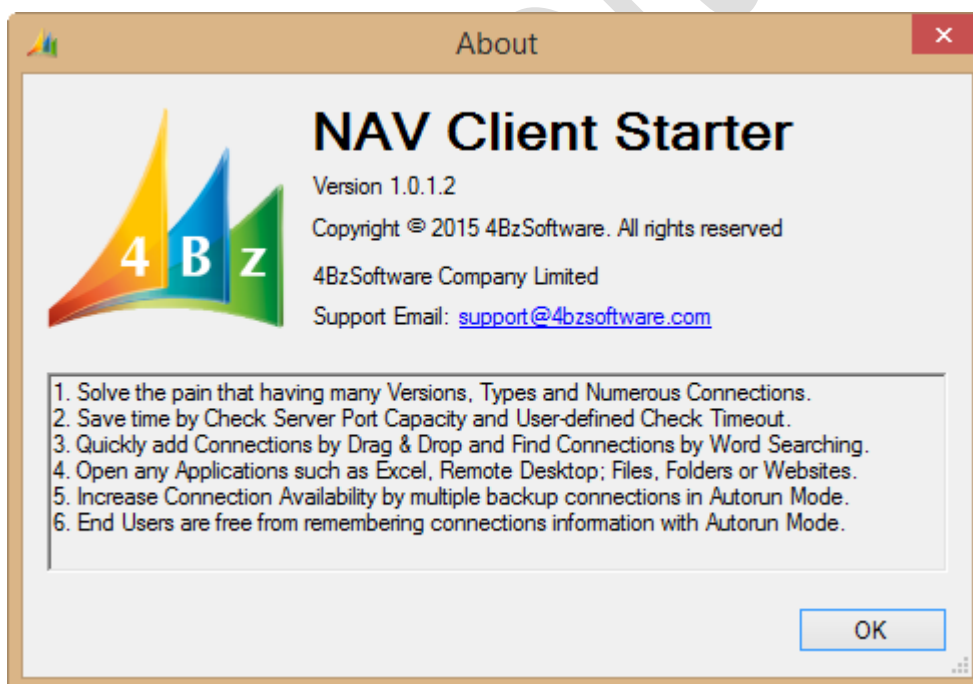
NAV nowadays has many versions from 1.0 to 9.0, various types of client such as Native Client, SQL Client, Development Environment Client, Web Client... As a result, along with your growing business, you have numerous connections. The more customers you have, the more connections you manage. It is painful.

Our tool "NAV Client Starter" solves the pain that having many versions, types and numerous NAV connections. It helps to prevent converting NAV database to newer version mistake, and increases connection availability with multiple backup connections for end users. Finally, NAV Client Starter is Windows Application Starter that you can start any applications with parameters; open files/folders; surf websites. It is an alternative application for Windows Search and Windows Run dialog.

Related videos https://www.youtube.com/playlist?list=PLfgzNr8_2GkqWZcNjMWSaLcduCIYMqrmC

Main features of "NAV Client Starter":

1. Solve the pain that having many Versions, Types and Numerous Connections.
2. Save time by Check Server Port Capacity and User-defined Check Timeout.
3. Quickly add Connections by Drag & Drop and Find Connections by Word Searching.
4. Open any Applications such as Excel, Remote Desktop; Files, Folders or Websites.
5. Increase Connection Availability by multiple backup connections in Autorun Mode.
6. End Users are free from remembering connections information with Autorun Mode.



We make every effort to ensure that there are no errors. However, no one is perfect, and mistakes do occur. If you find an error or have any idea, we would be very grateful for your feedback, please email to support@4bzsoftware.com. Hope with our products, we contribute to success of your company!

2. How to install

2.1 Prerequisite

NAV Client Starter requires .NET Framework 4.0 or above. You can download it from below link:

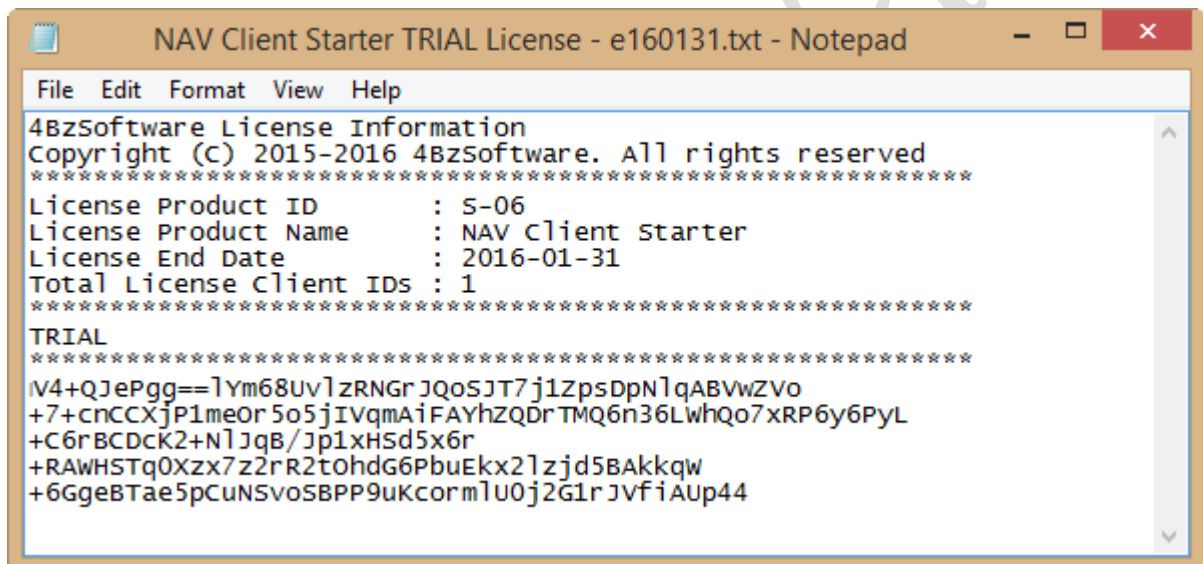
<https://www.microsoft.com/en-us/download/details.aspx?id=17718>

2.2 Installation

You don't need to run any installation or setup, just click and run "NAV Client Starter.exe" file.

2.3 Try Tool with Trial License

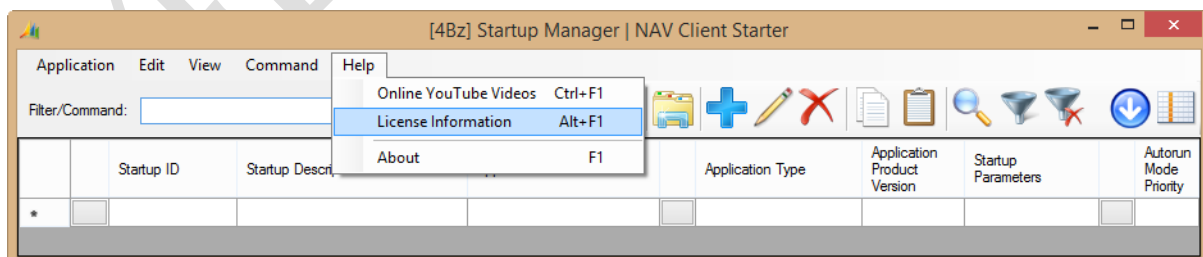
To try the tool, you have to import a TRIAL License file which is in text format:



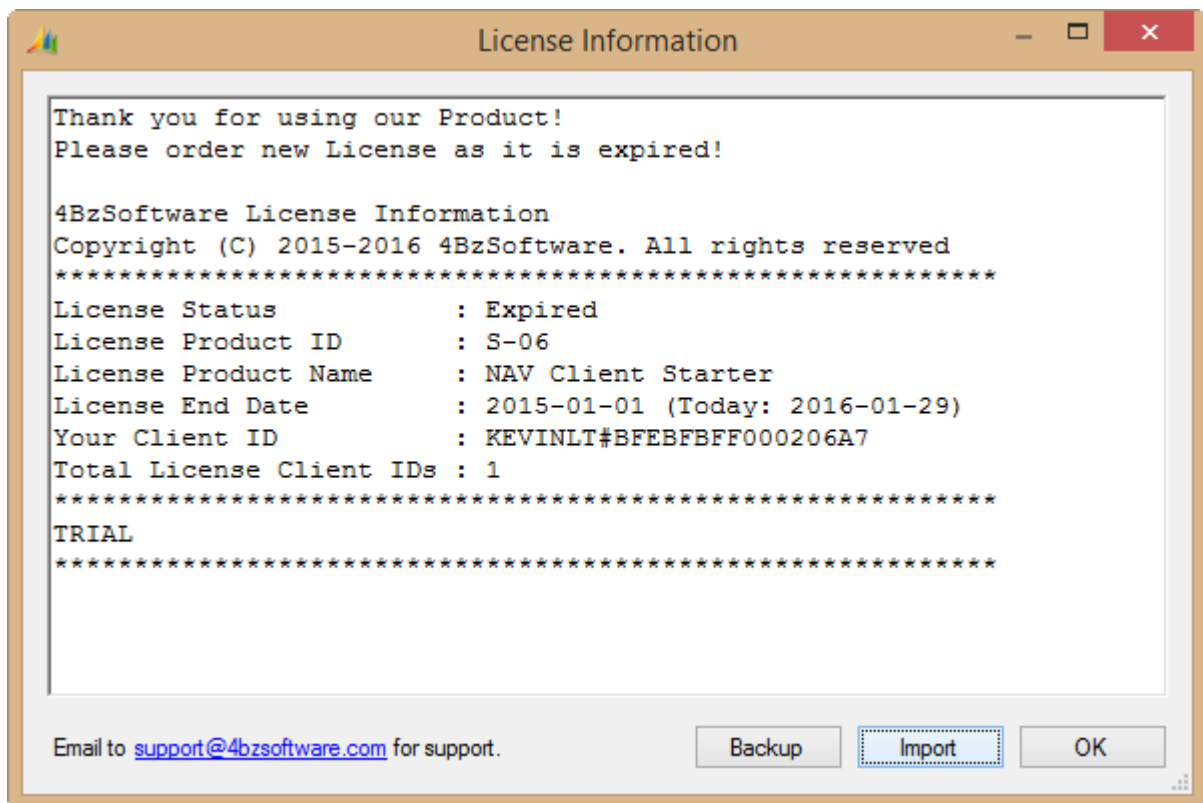
```

NAV Client Starter TRIAL License - e160131.txt - Notepad
File Edit Format View Help
4BzSoftware License Information
Copyright (c) 2015-2016 4BzSoftware. All rights reserved
*****
License Product ID      : S-06
License Product Name    : NAV Client starter
License End Date       : 2016-01-31
Total License Client IDs : 1
*****
TRIAL
*****
IV4+QJePgg==lYm68Uv1zRNGrJQoSJT7j1ZpsDpn1qABVwZVo
+7+cnCCXjP1meOr5o5jIVqMAiFAYhZQDrTMQ6n36LWhQo7xRP6y6PyL
+C6rBCDck2+N1JqB/Jp1xHsd5x6r
+RAWHSTq0Xzx7z2rR2tOhdG6PbuEkx21zjd5BAkkqw
+6GgeBTae5pCuNSvoSBPP9uKcorm1u0j2G1rJVfiAUp44
  
```

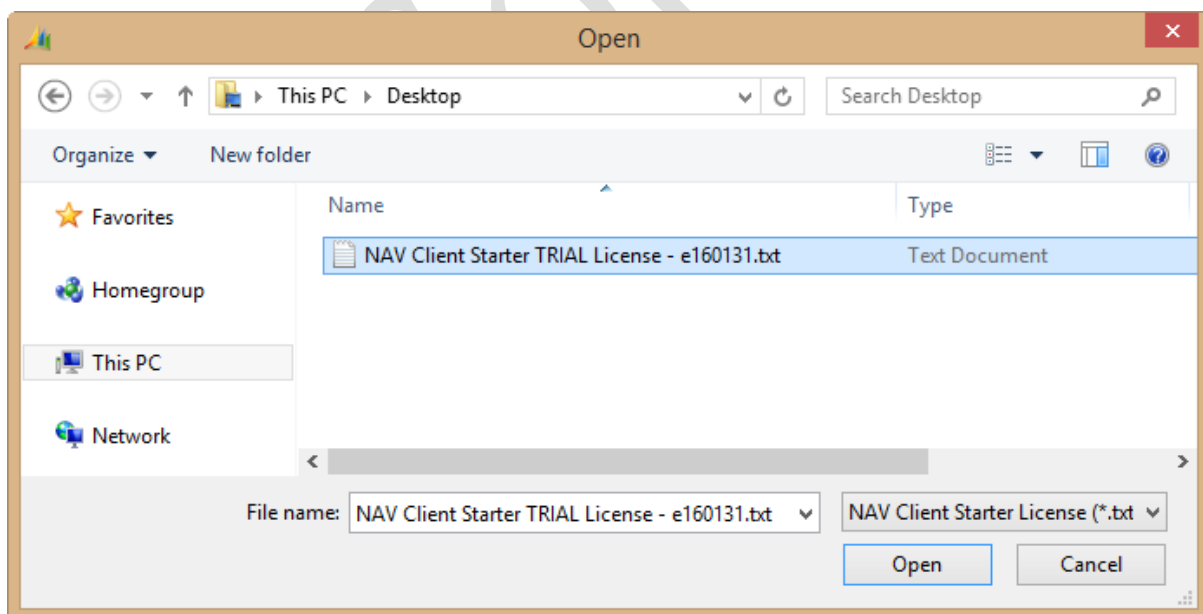
To import TRIAL License, open tool, press Alt+F1 or click menu Help → License Information:



License Information dialog appears, click Import button:



Browse TRIAL License file, then click Open:



Check new information in License Information dialog, and start using tool.

2.4 Product License Process

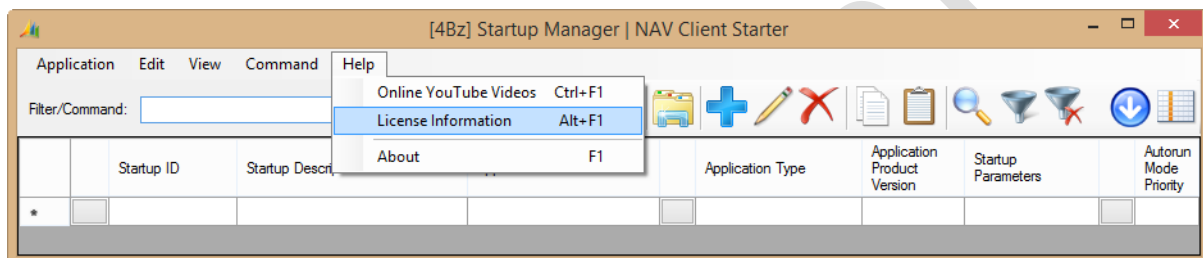
NAV Client Starter is licensed by PC's ID and Time. Process for Product License:

1. Get all IDs of required PCs in Excel file (No., PC's ID columns).
2. Send us the Excel file.
3. We send you Product License text file which contains license of sent PCs and Time.
4. Import Product License file to required PCs.

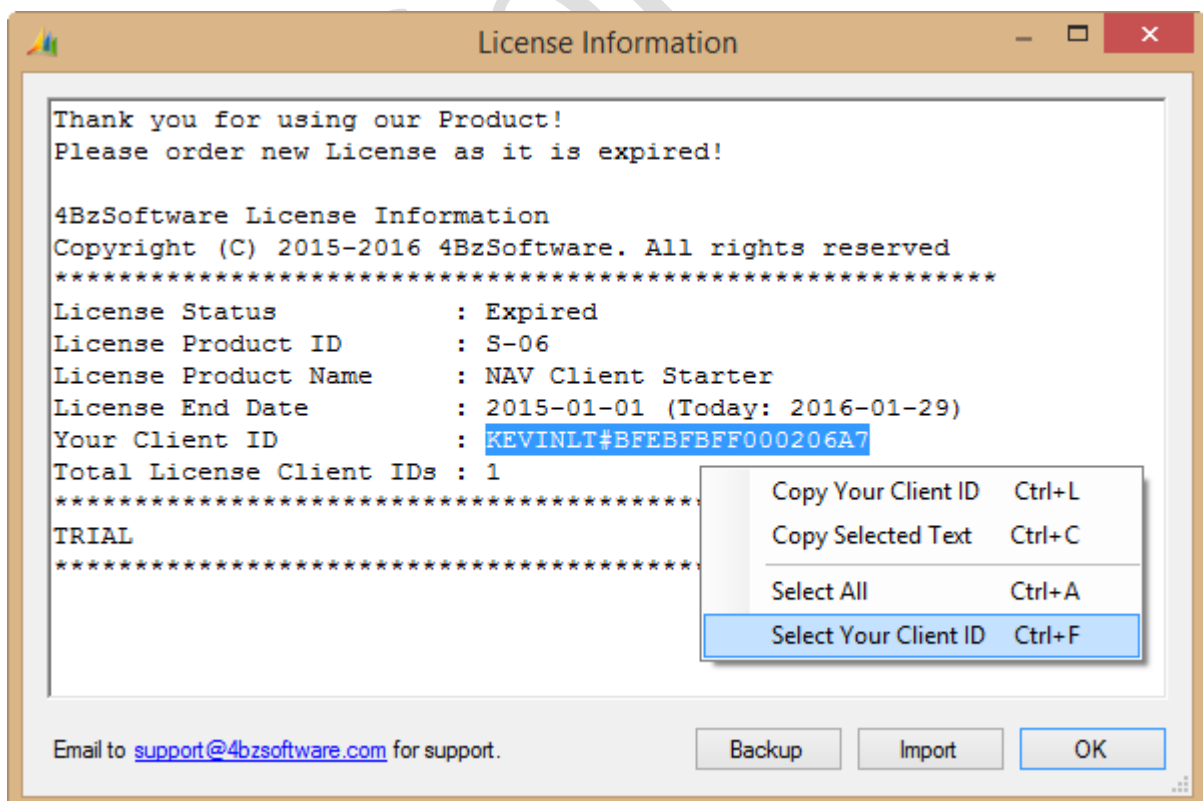
Next sections show you how to Get ID of PC, Import and Backup Product/Trial License file.

2.5 Get ID of PC

To get ID of PC, press Alt+F1 or click menu Help → License Information:



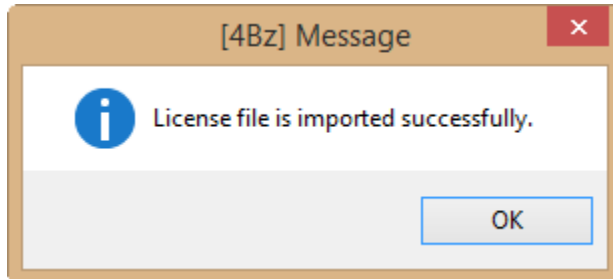
License Information dialog appears, press Ctrl+F or right-click textbox and Select Your Client ID:



2.6 Import Product/Trial License file

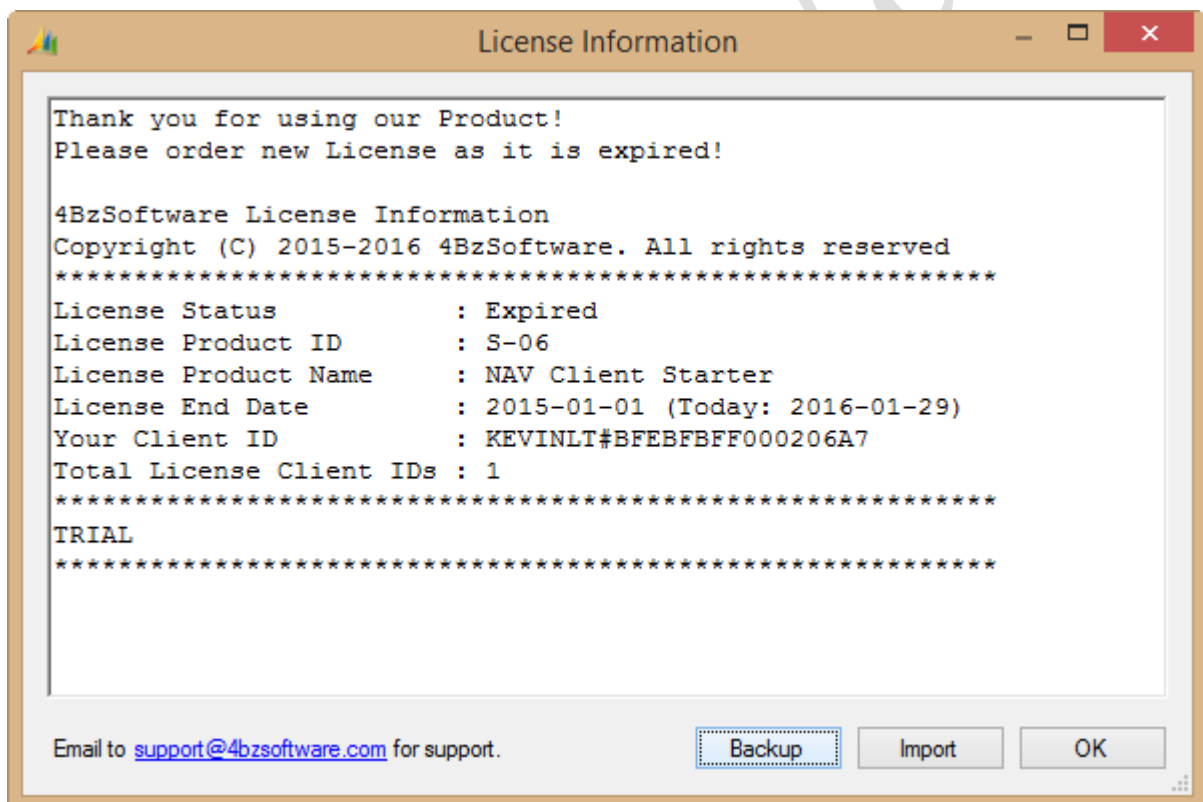
Import Product License is same as Import Trial License in above “Try Tool with Trial License” section.

After import Product/Trial License file, you will receive a message:



2.7 Backup Product/Trial License file


In License Information dialog, click Backup button, and save your Product/Trial License file:




Check new information in License Information dialog, and start using tool.

3. How to use

There are some ways to create and run a Startup. Basically, to create a new Startup:

1. On new line, enter unique "Startup ID".
2. Fill in "Startup Description".
3. Browse "Application File Name" by clicking  button.
4. Provide "Startup Parameters" as your requirement.

Then, you run the startup by clicking  button on Toolbar (F8 key).

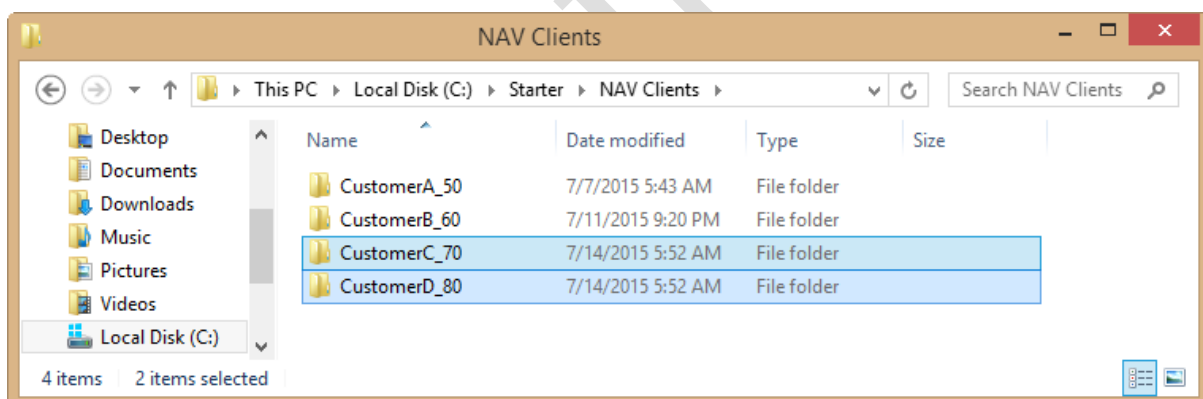
You can find more ways in document and from our videos:

https://www.youtube.com/playlist?list=PLfgzNr8_2GkgWZcNjMWSaLcduCIYMqrmC

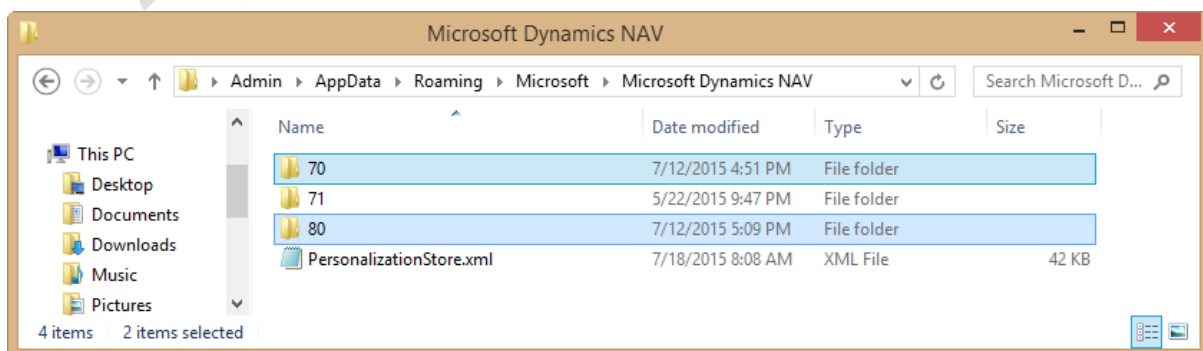
3.1 Create Startup for NAV Windows Client

As our experience, the best way to start NAV Windows Client is using ClientUserSettings.config file separately, especially when we have many NAV versions, builds, authentication types. For instance, CustomerC uses version 70 (2013) and CustomerD uses version 80 (2015):

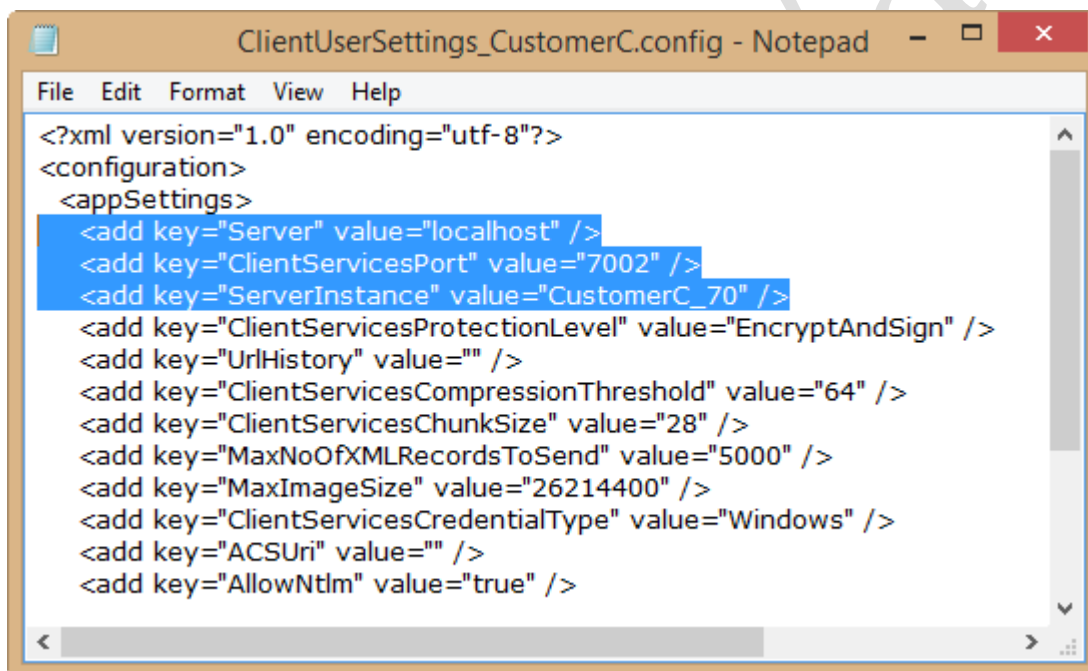
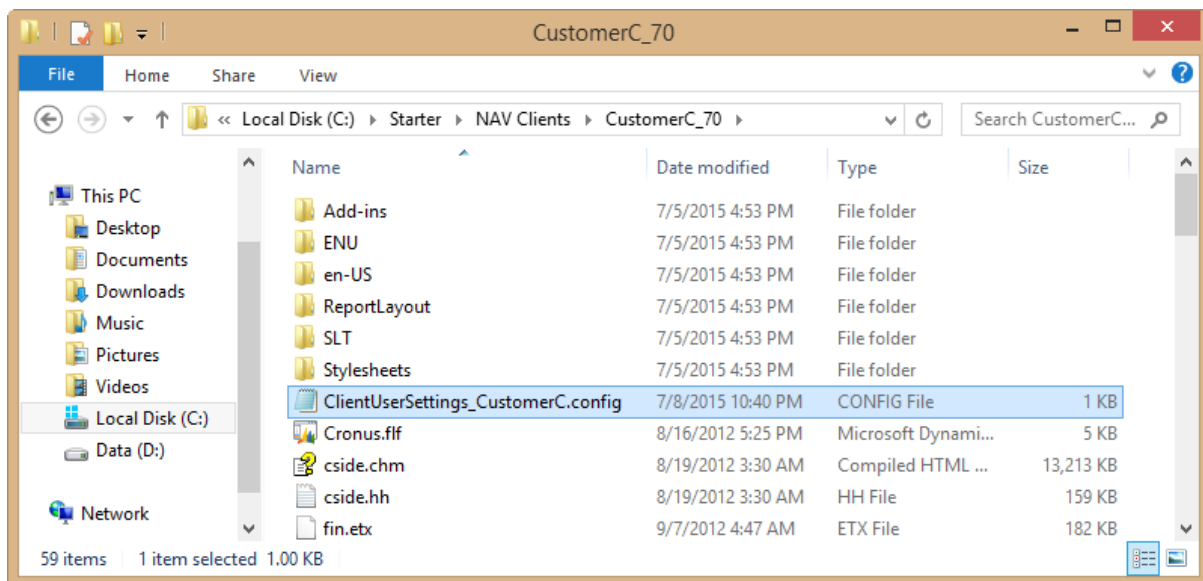
1. Prepare all NAV Clients:

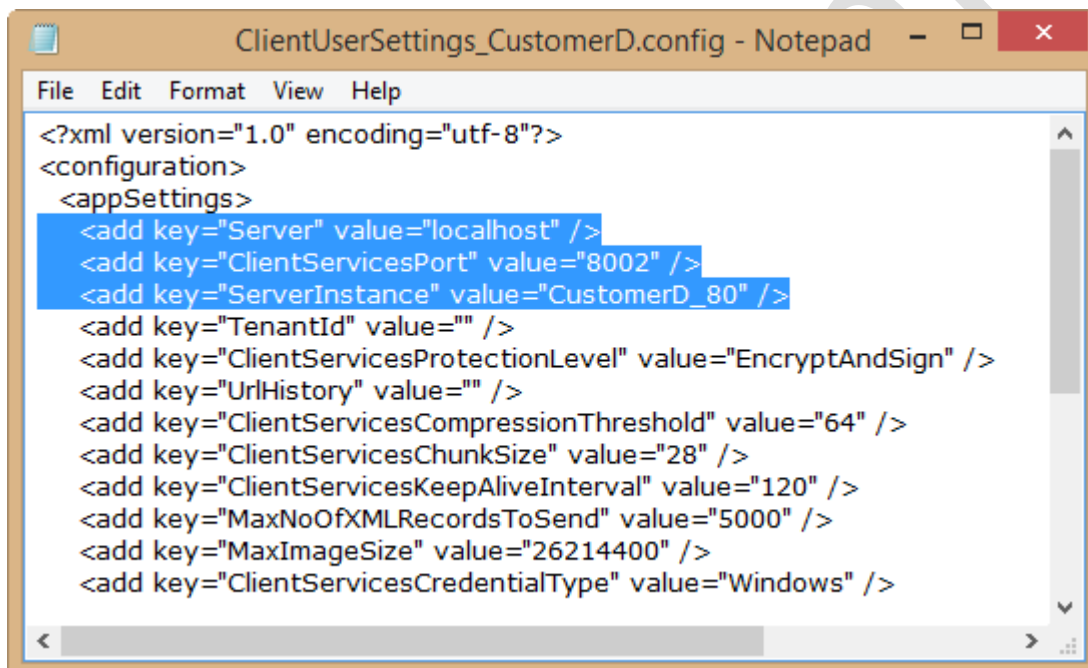
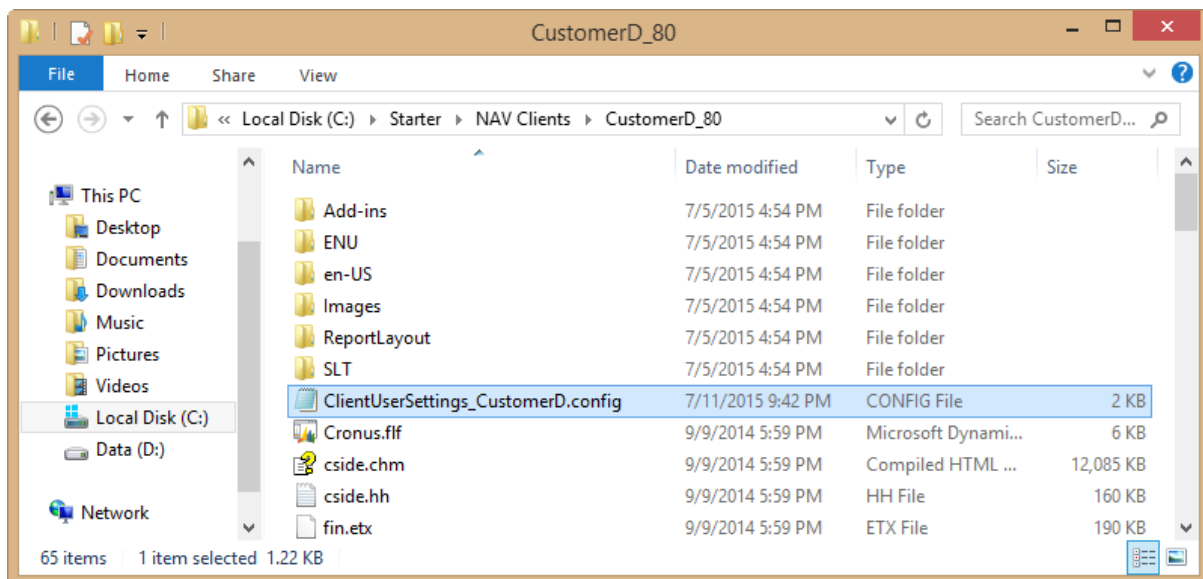


2. Copy default ClientUserSettings.config files accordingly, these files are at folder %AppData%\Microsoft\Microsoft Dynamics NAV:




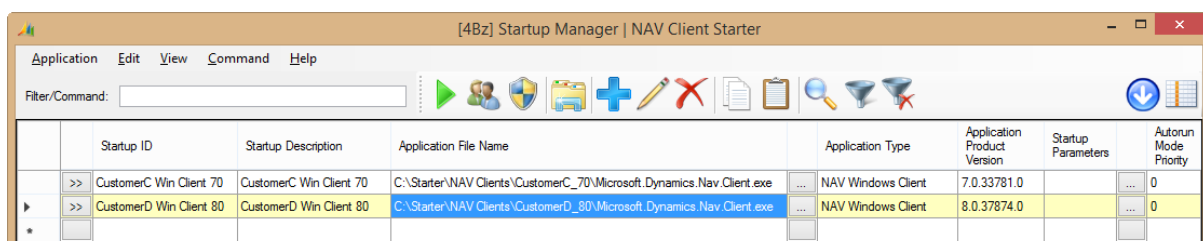
3. Edit ClientUserSettings.config files:




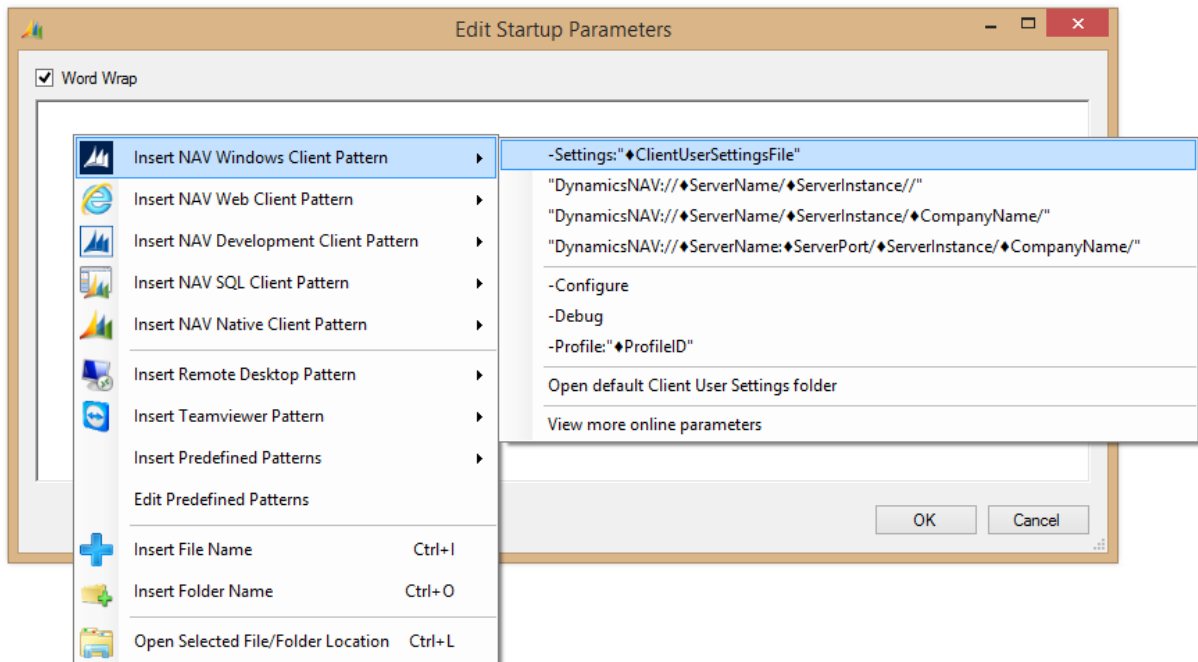


4. Create Startups:

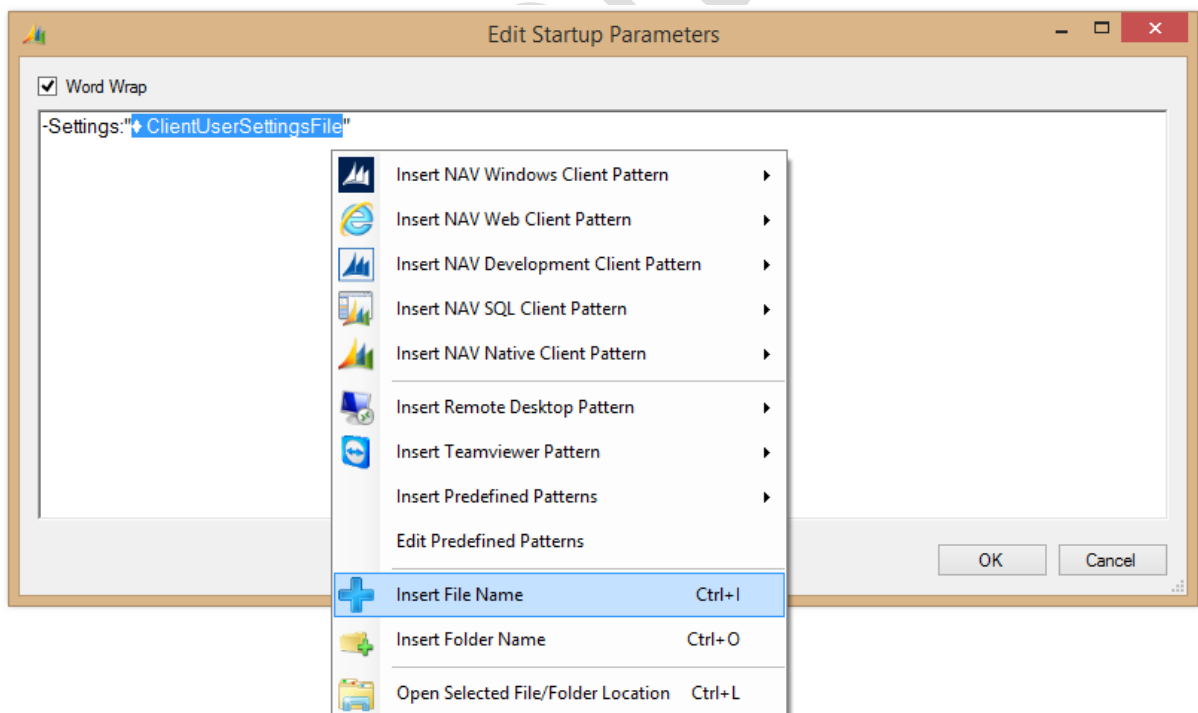
- Enter unique "Startup ID".
- Fill in "Startup Description".
- Browse "Application File Name" by clicking  button. Application Type and Application Product Version are filled in automatically:



- Provide “Startup Parameters”, point to ClientUserSettings.config files accordingly:
 - Click  button to open Edit Startup Parameters dialog.
 - Right click text box, select insert NAV Windows Client Pattern as below:

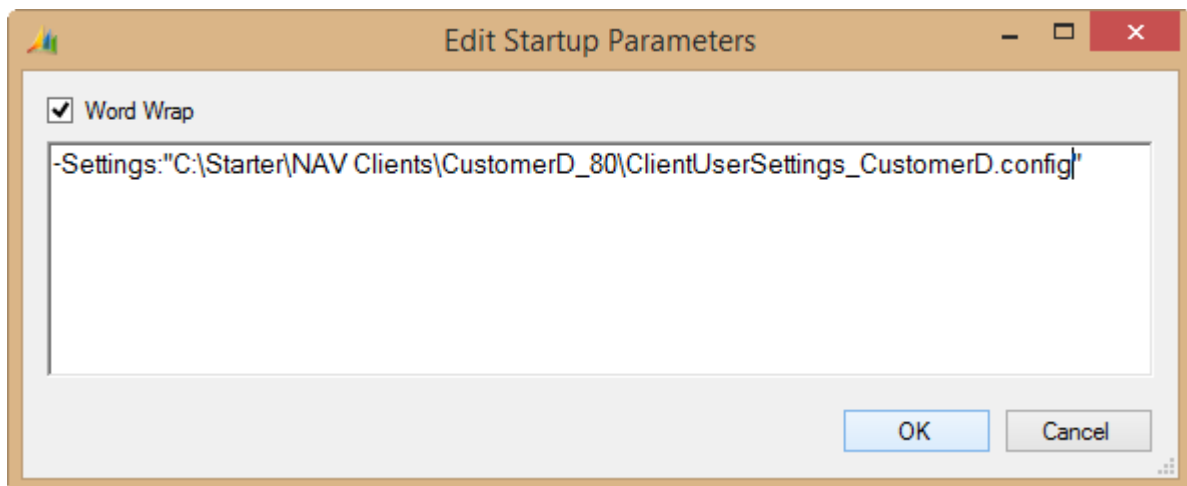


- Select ♦ClientUserSettingsFile and right click to choose Insert File Name:

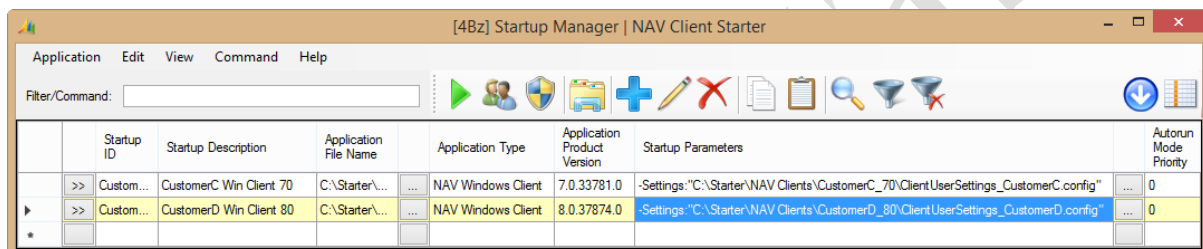


Tip: you can drag & drop file to insert file name.

- Click OK to finish edit parameters:

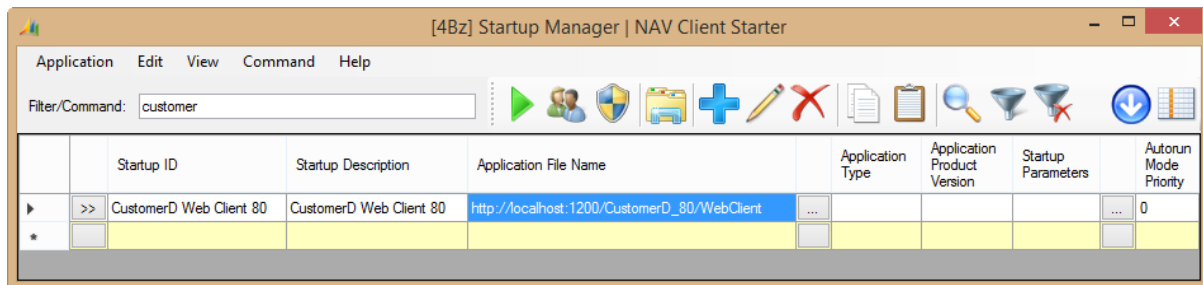


- You can run current Startup by clicking  button on Toolbar (F8 key):

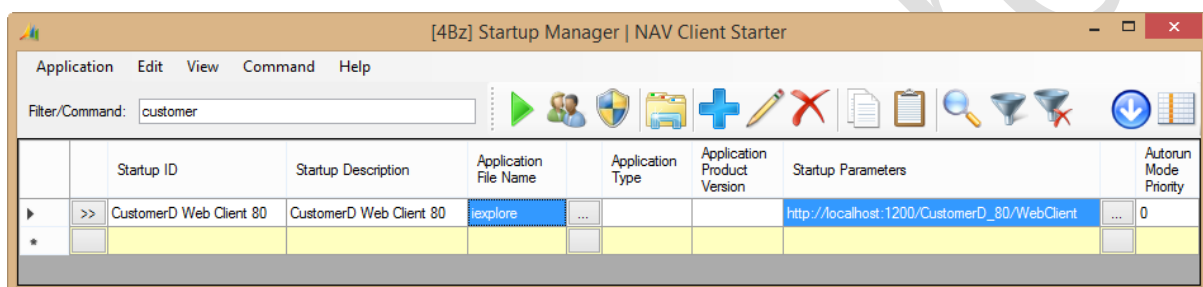


3.2 Create Startup for NAV Web Client

Fill in “Application File Name” with NAV Web Address, windows uses default Browser in this case:

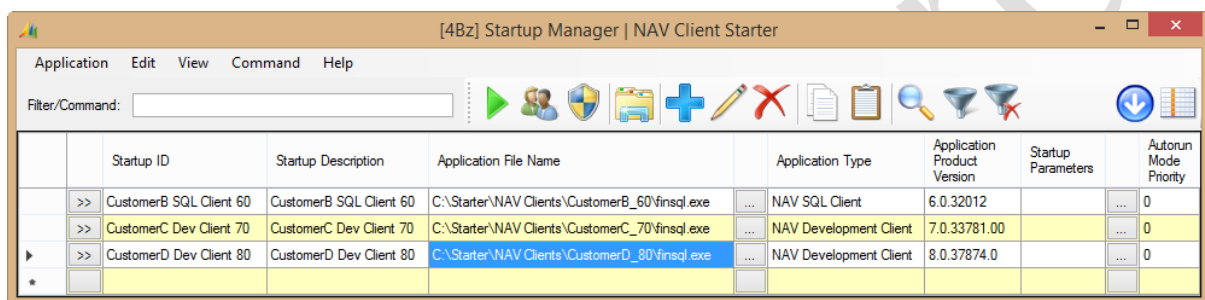
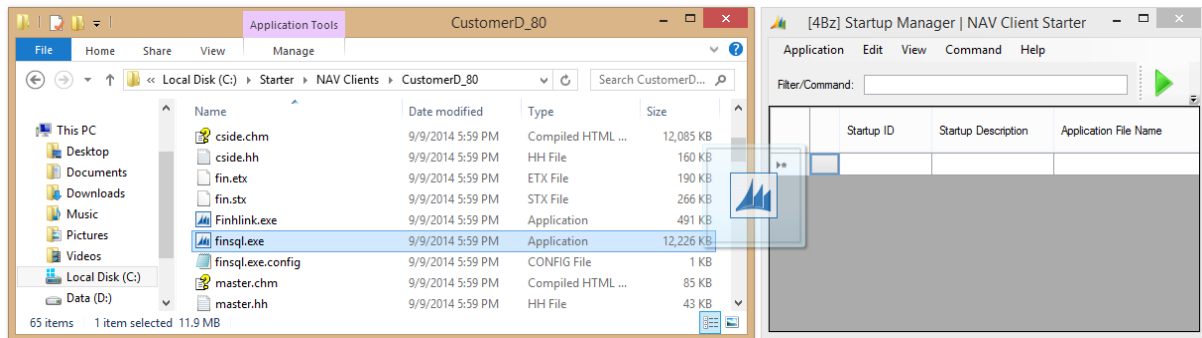


If you want to open with specified Browser such as Internet Explorer, Chrome, or Firefox, fill in “Application File Name” with your Browser, and provide NAV Web Address as Startup Parameters:

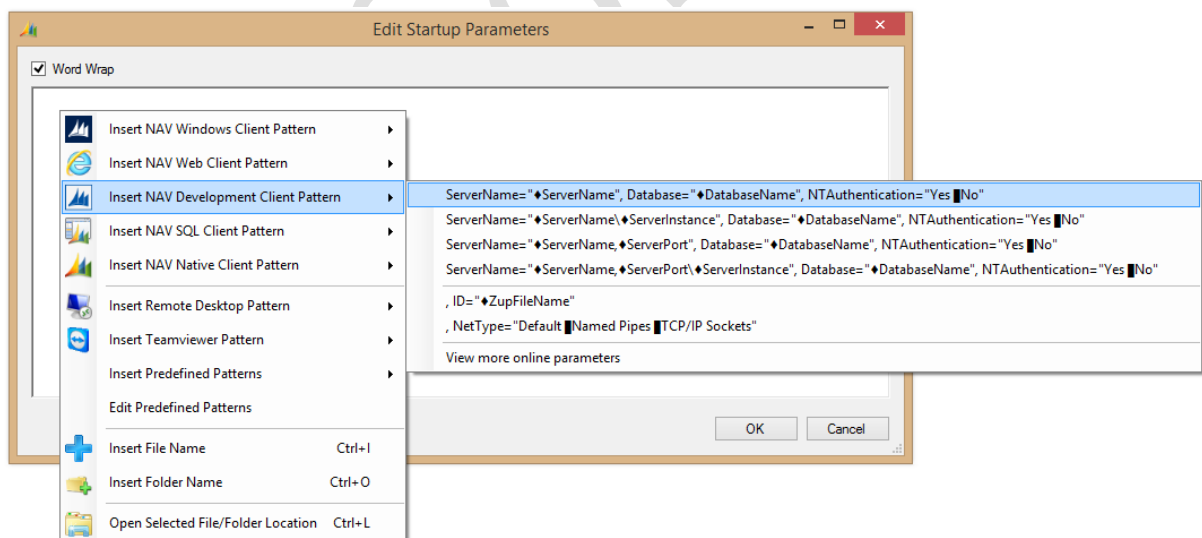


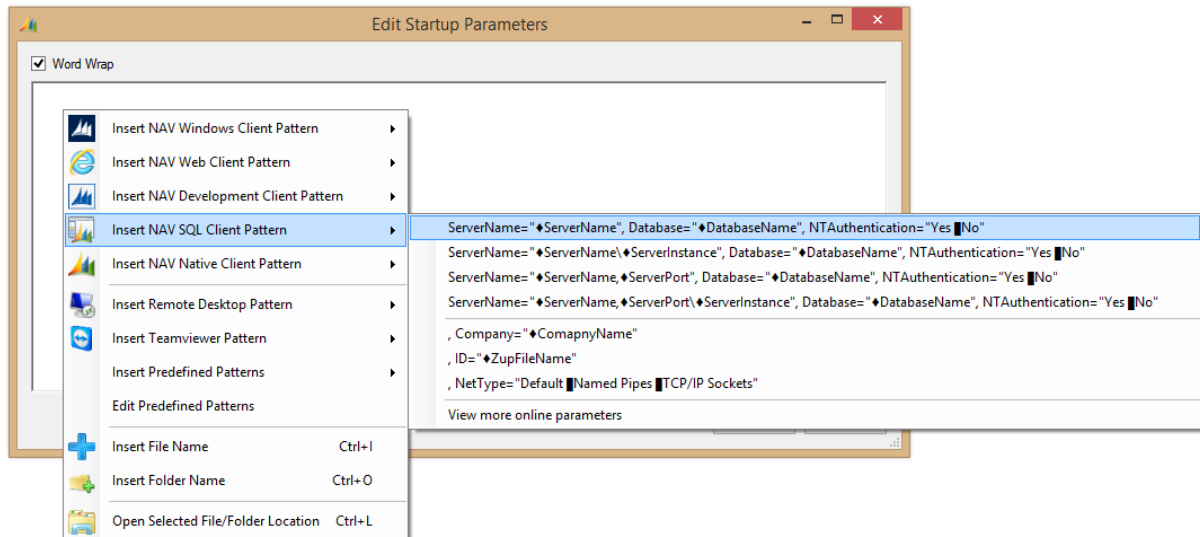
3.3 Create Startup for NAV Development/SQL Client

You can fill in Startup ID, Startup Description, Application File Name (same way of Create Startup for NAV Windows Client); or drag & drop application file and edit Startup ID, Startup Description:

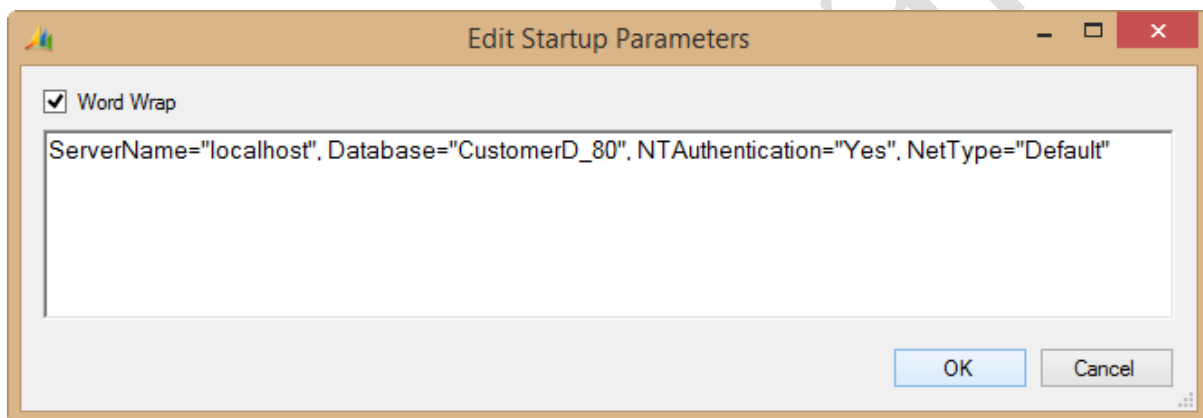


Then provide Startup Parameters (same way of Create Startup for NAV Windows Client) using appropriated Client Pattern:

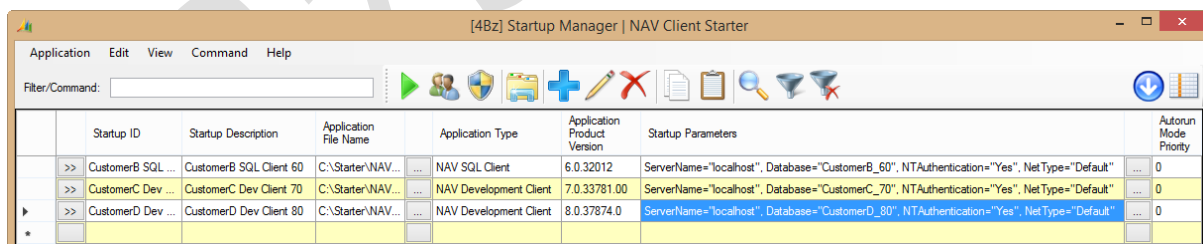




Click OK to close Edit Startup Parameters:

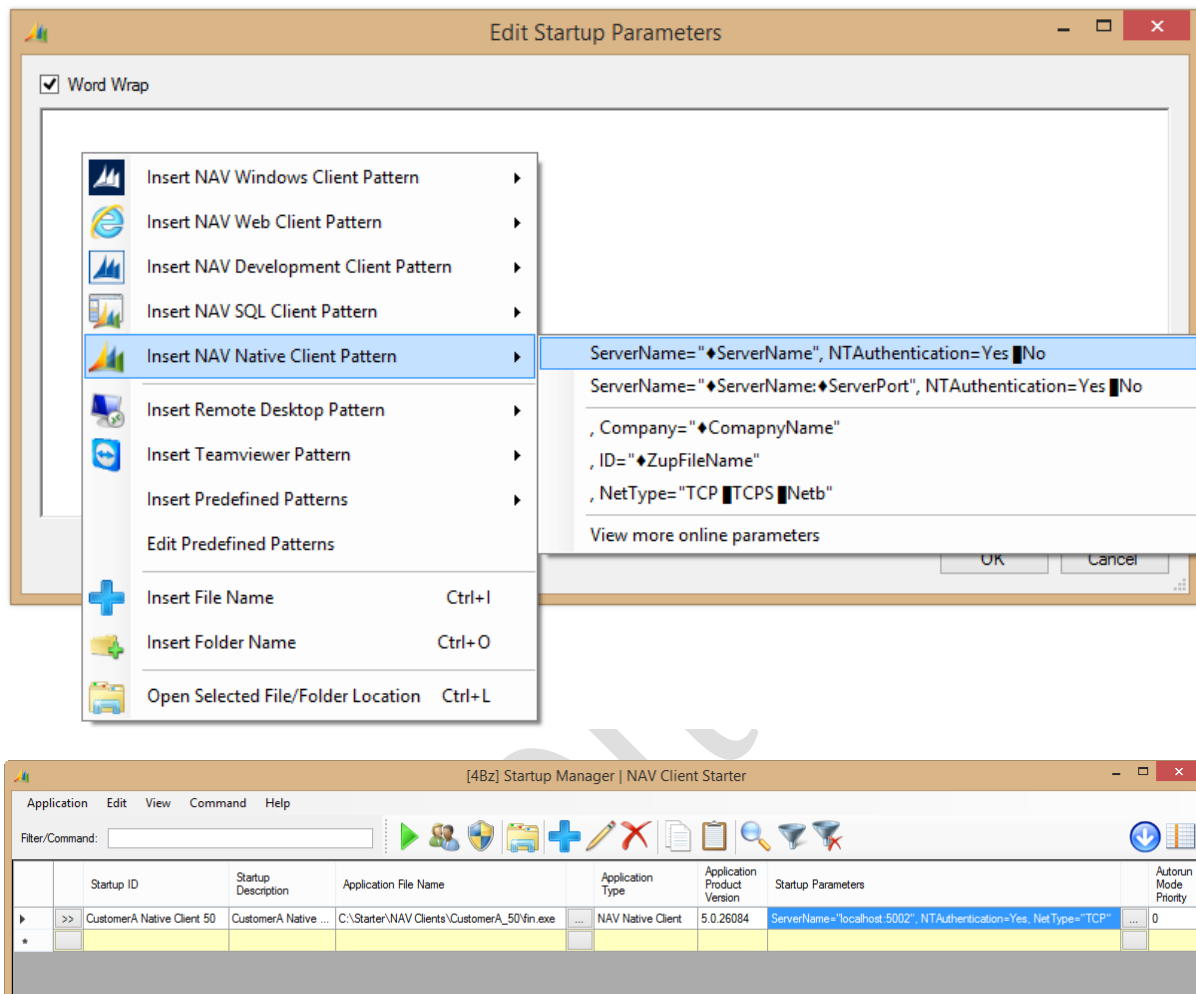


Now you can start NAV Development/SQL Client:



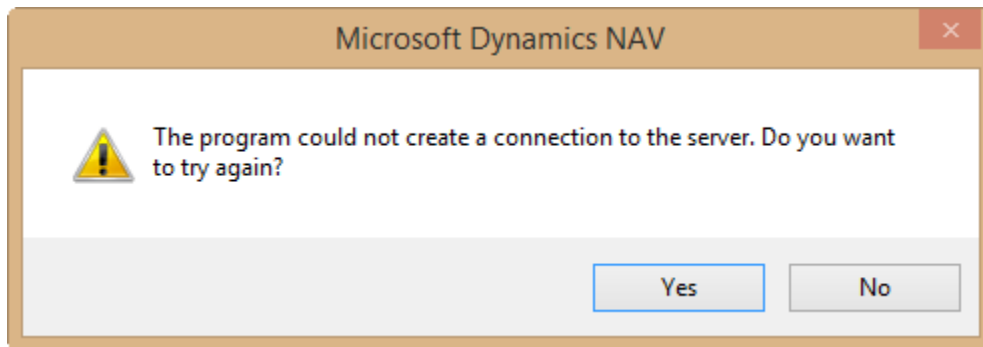
3.4 Create Startup for NAV Native Client

Create Startup for NAV Development/SQL Client and NAV Native Client are same way. Just use NAV Native Client Pattern when edit Startup Parameters:

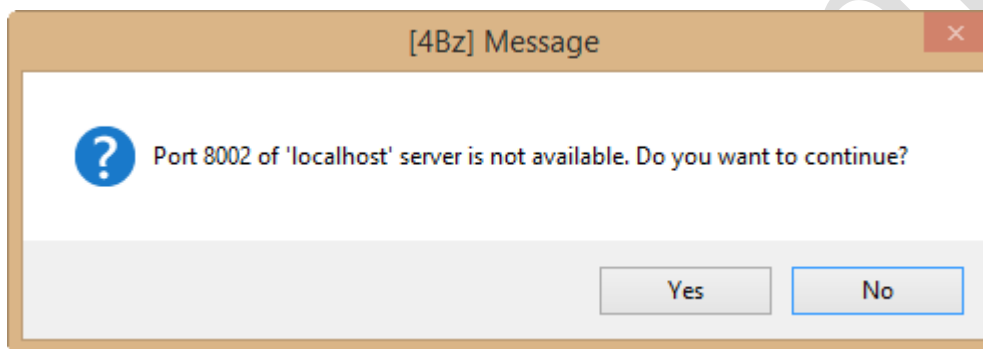


3.5 Check Server Port Availability

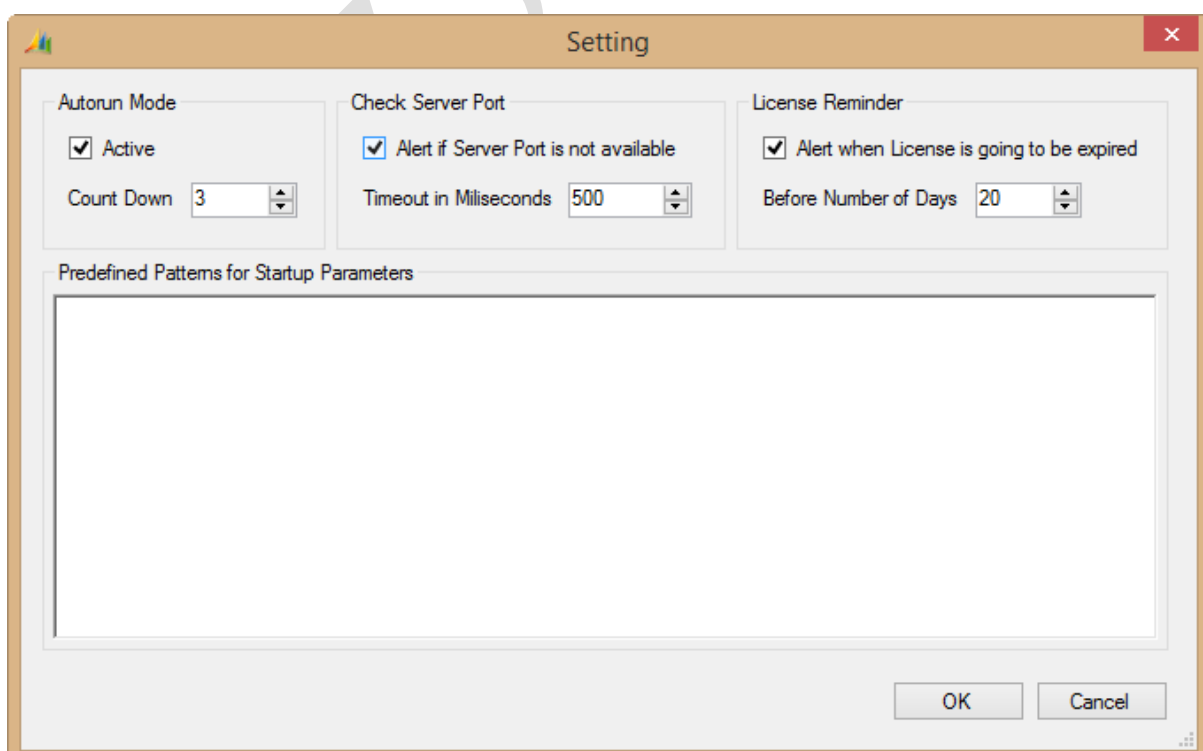
When NAV Windows Client cannot connect to server, it takes you around 20 seconds for waiting:



Save your time with NAV Client Starter, it checks server port availability before running NAV. When server port is not available, you receive below message:

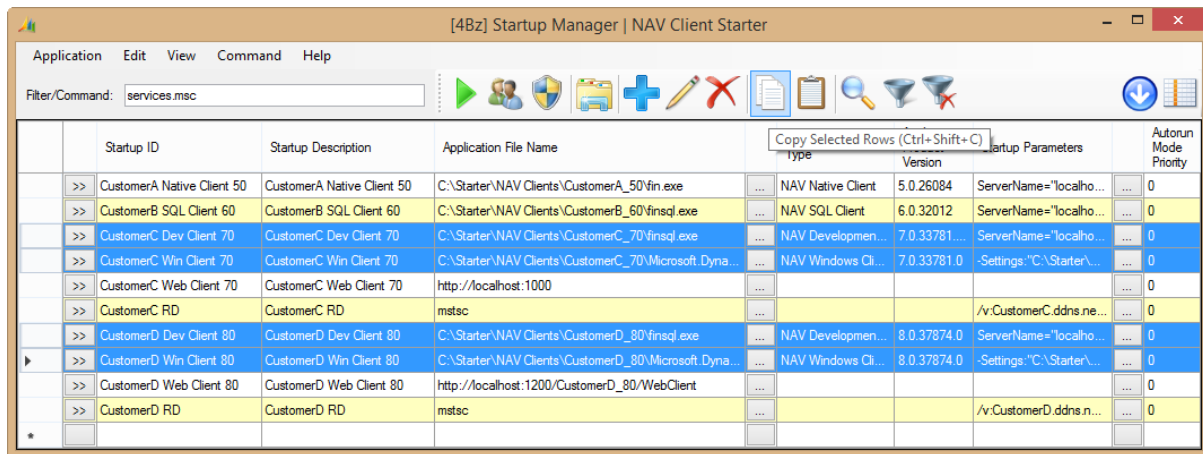


By default, this feature is activated with 500 milliseconds timeout. You can configure it by clicking menu Application → Setting (F11 key):

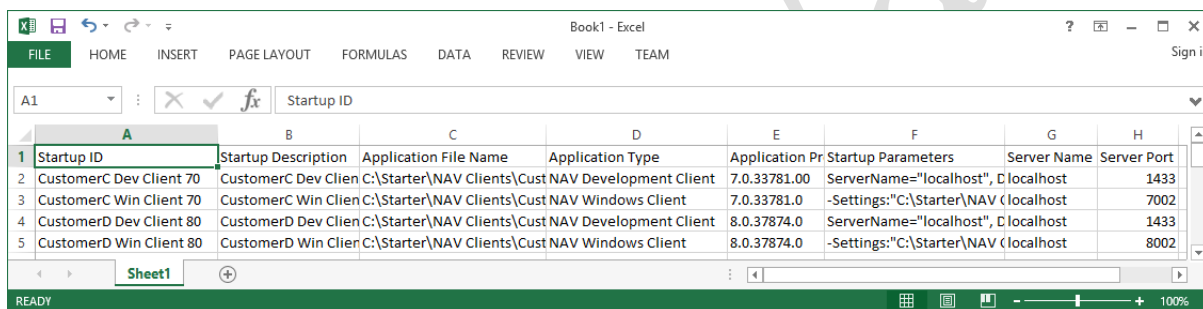


3.6 Copy & Paste Startups

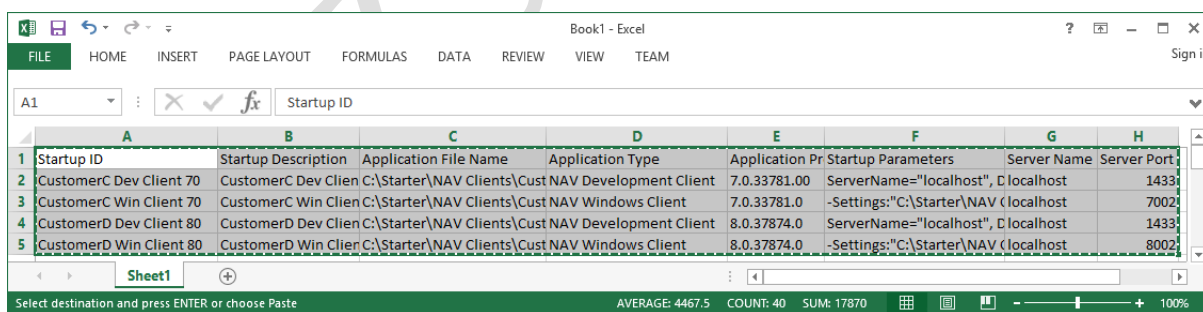
You can backup Startups to Excel. Select desired Startups, click Copy on Toolbar (Ctrl+Shift+C keys):



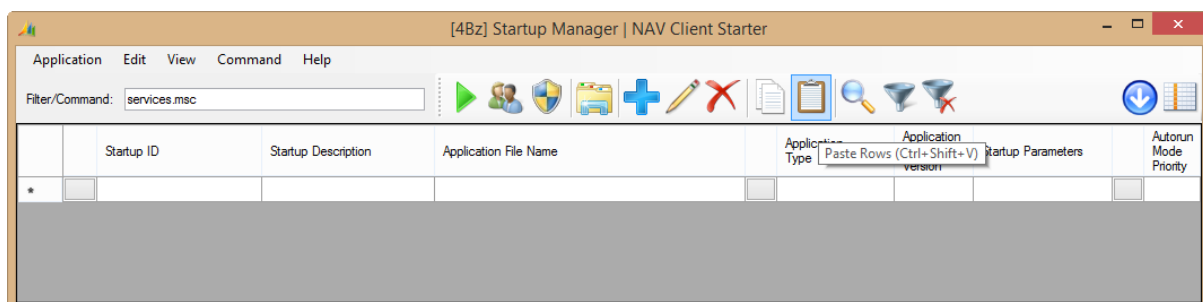
Open Excel and Paste them (Ctrl+V keys):



You can also share the Excel file to your colleagues. And your colleagues can paste them back to NAV Client Starter from Excel:

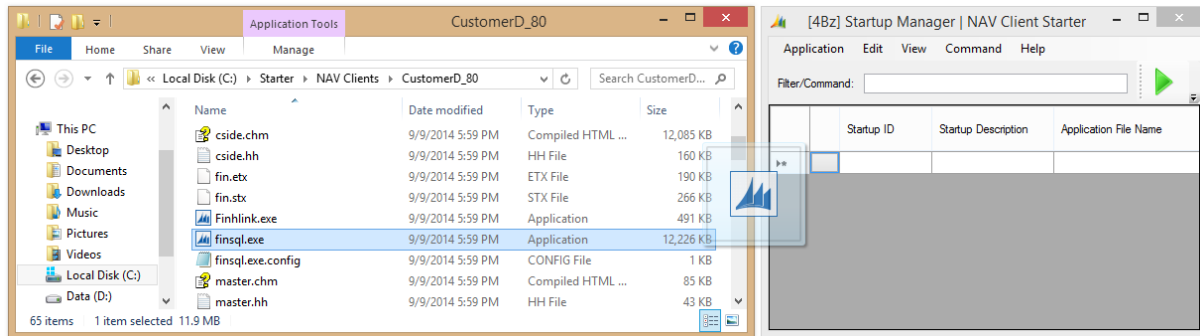


Click Paste icon on Toolbar (Ctrl+Shift+V keys):

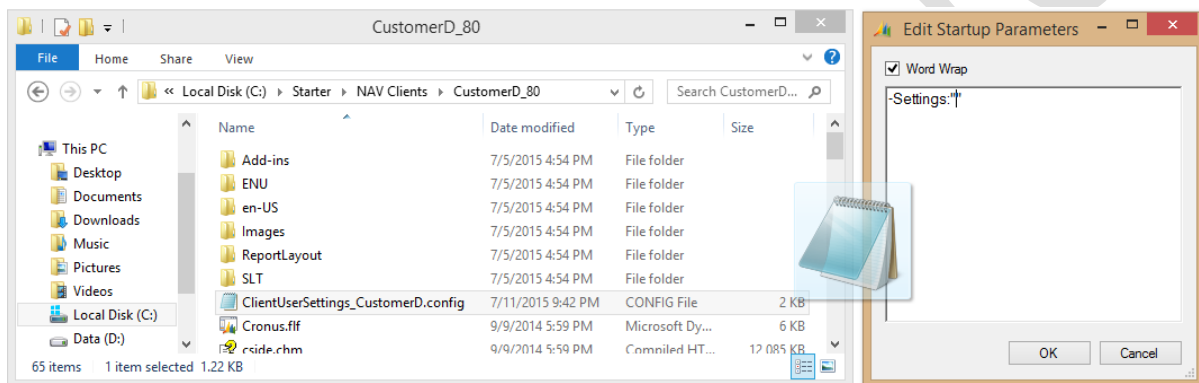


3.7 Drag & Drop Files/Folders

You can drag & drop files/folders to create Startups quickly:

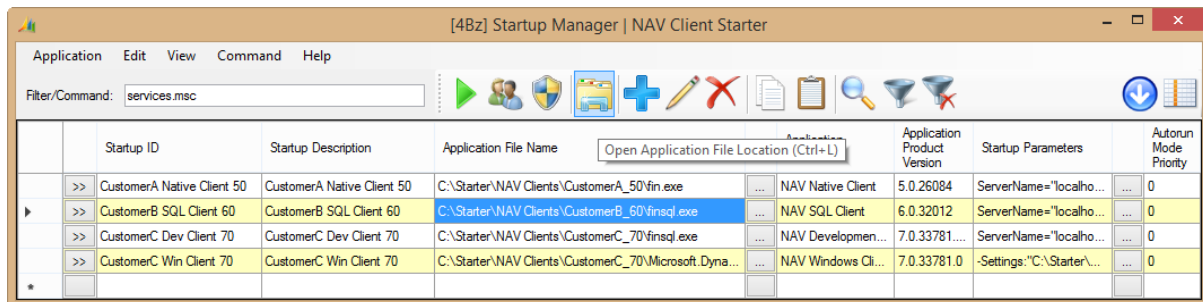


Or insert file/folder when edit startup parameters:



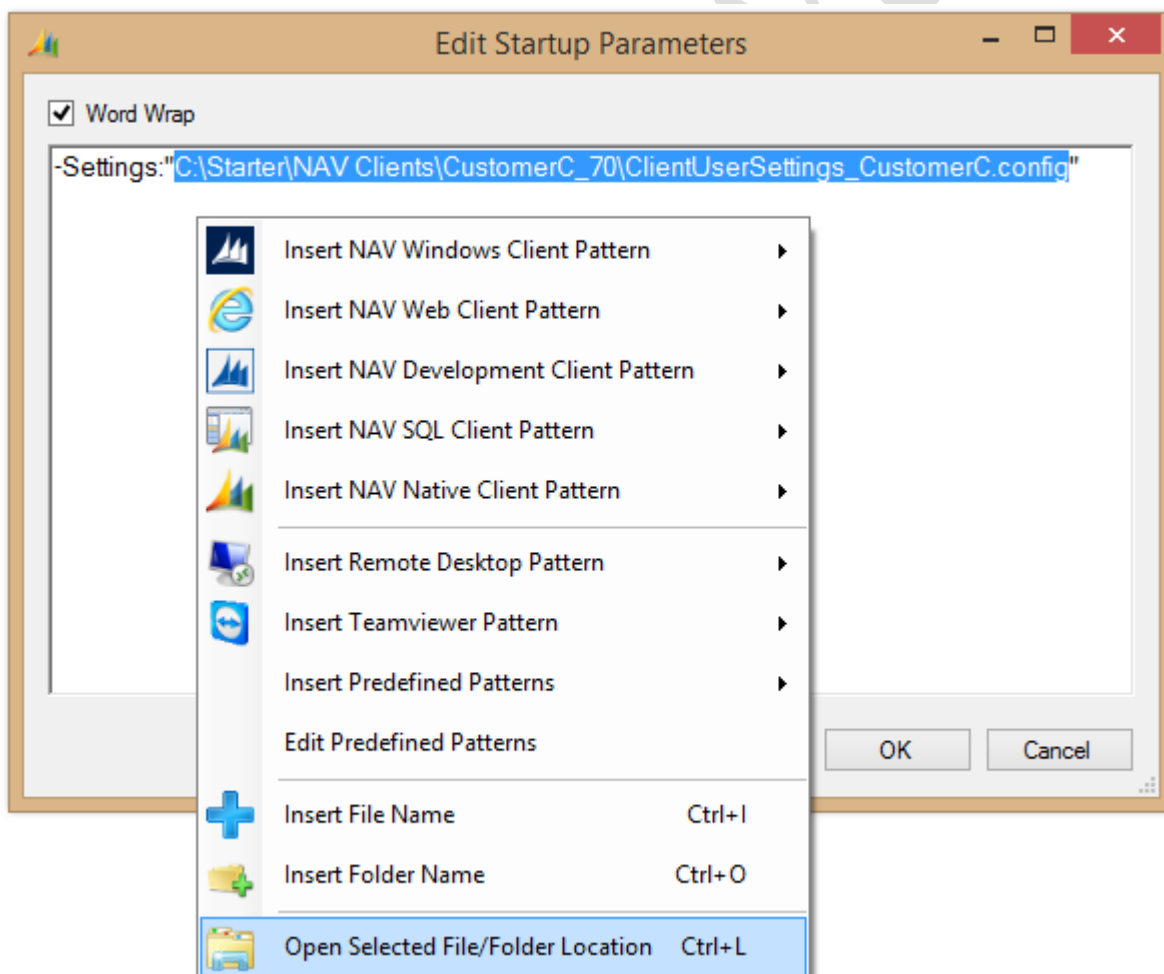
3.8 Open File/Folder Location

You can quickly open File/Folder Location of Application File Name. Select Application File Name and click the icon on Toolbar (Ctrl+L keys):



You can also do this in Edit Startup Parameters:

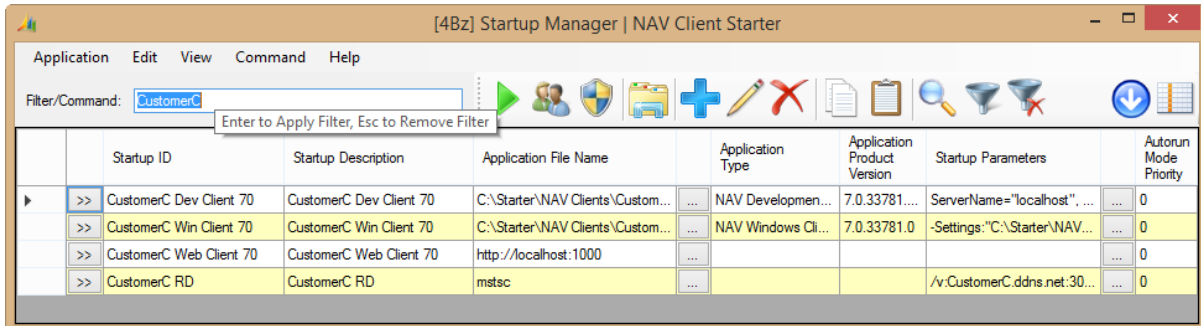
- Select file/folder name in text box
- Right click to popup context menu
- Click Open Selected File/Folder Location menu (Ctrl+L keys)



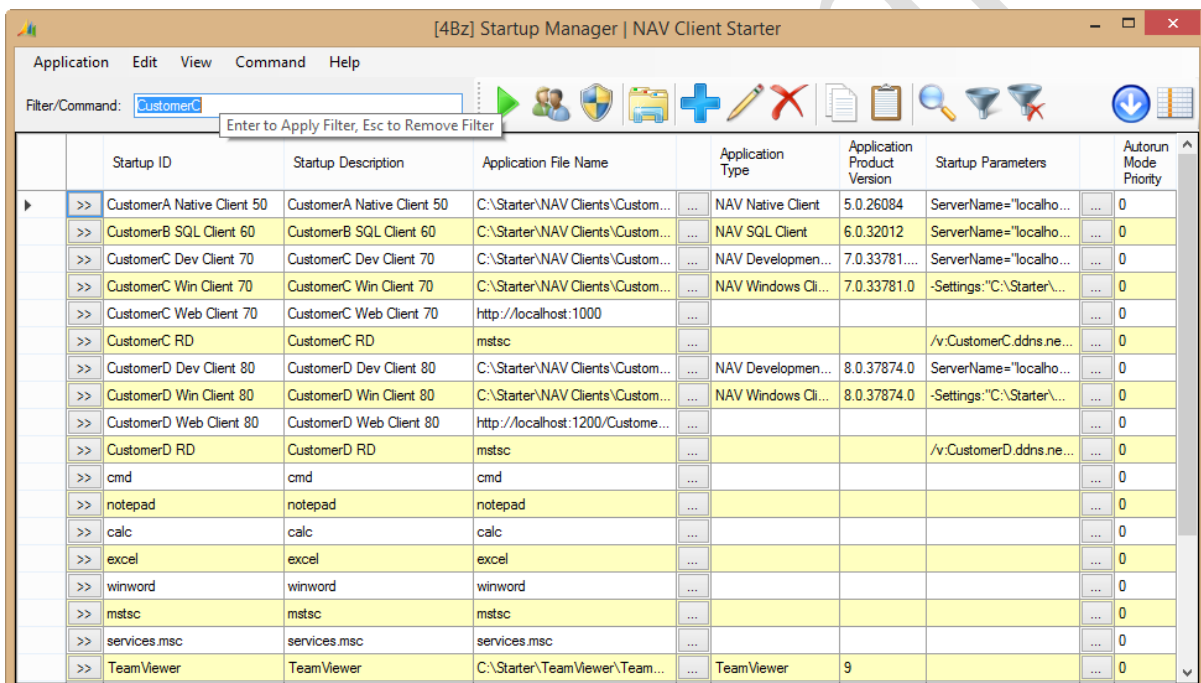
3.9 Filter Startups

When you have many Startups, filter function help you to get your needed Startups.

After input filter value in Filter/Command text box, press Enter to apply filter:

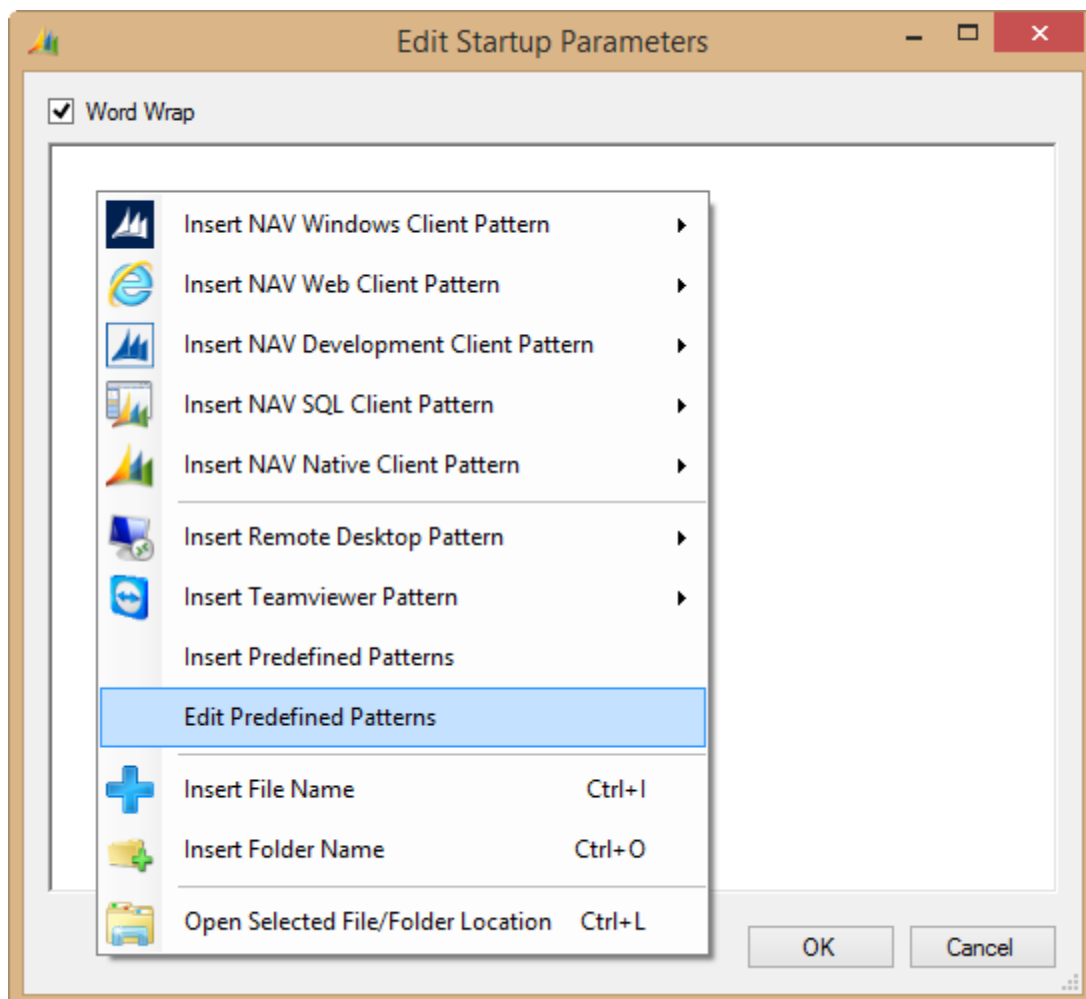


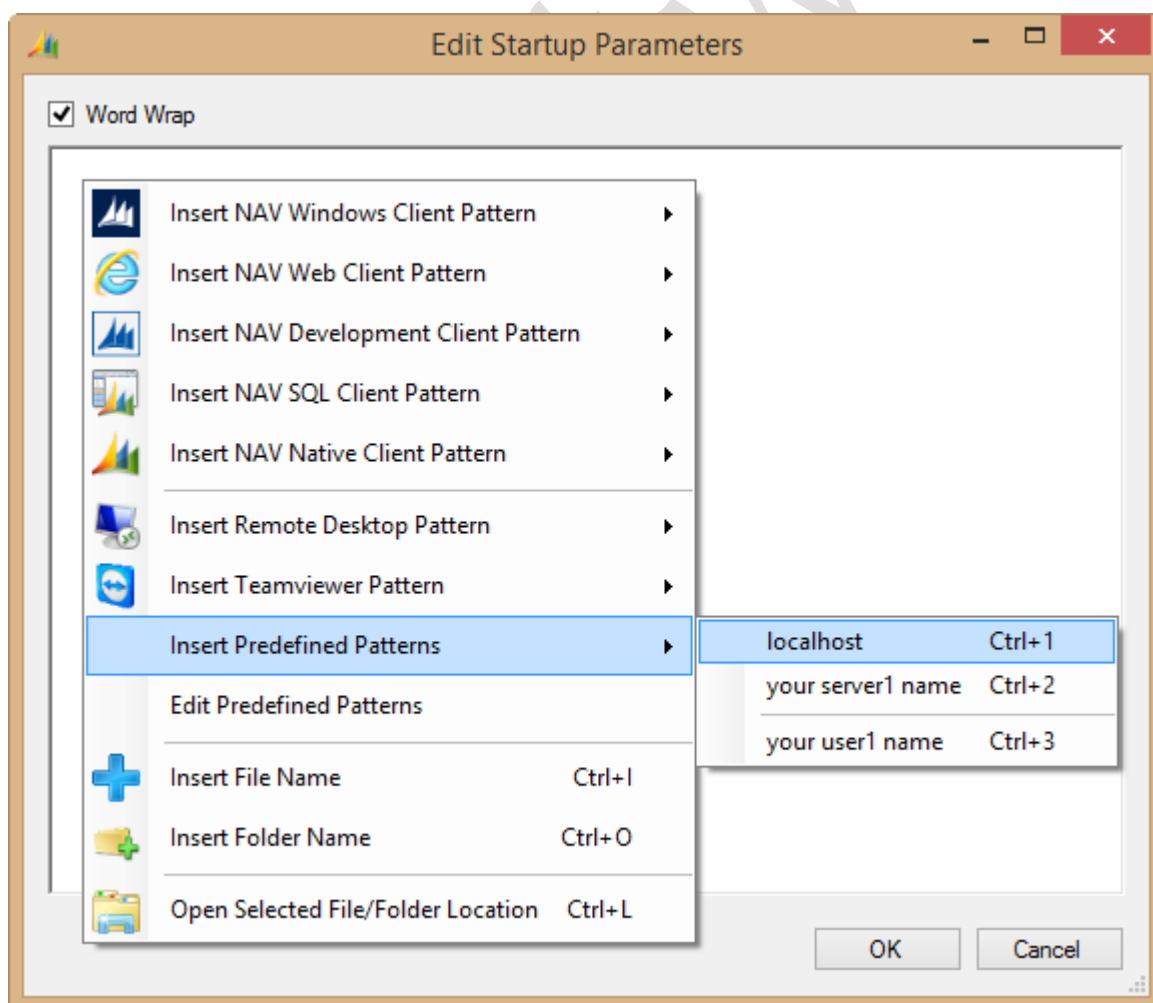
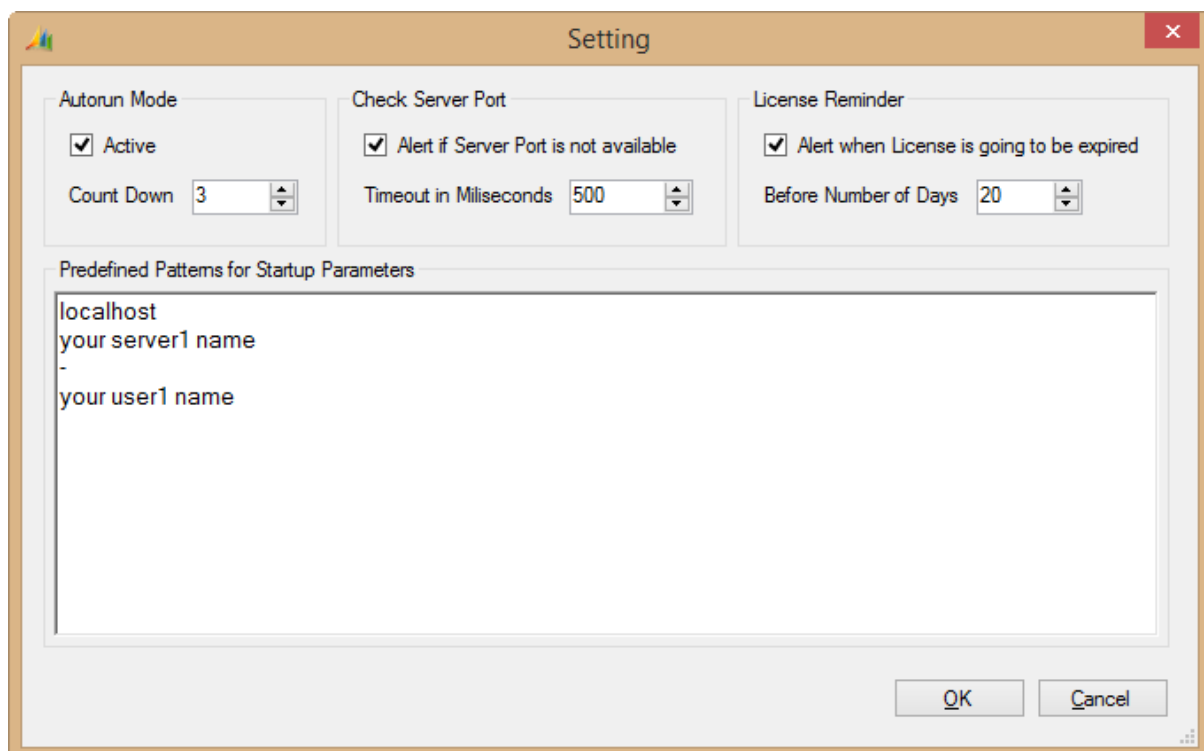
Press Esc to remove filter:



3.10 Use Predefined Patterns

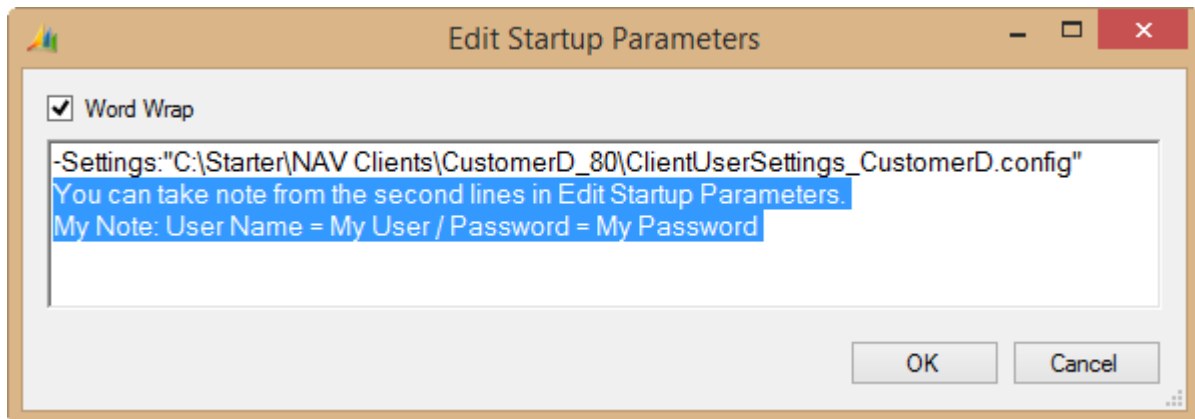
Some common Patterns such as localhost, your server1 name, IP1, user1 name ... are often used. Application allows you to edit and insert your Predefined Patterns in Edit Startup Parameters:





3.11 Take Note in Edit Startup Parameters

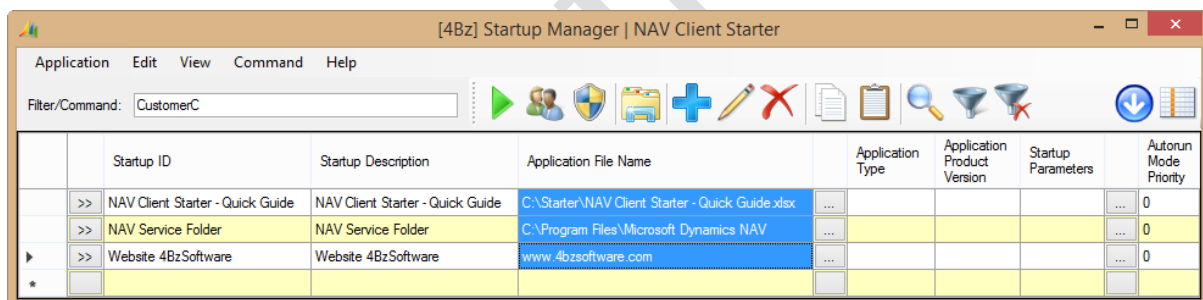
You can take note in Edit Startup Parameters, from the second lines:



Application only uses the first line as Parameters for Startup. If no Parameters used, still keep the first line blank and take note from the second lines.

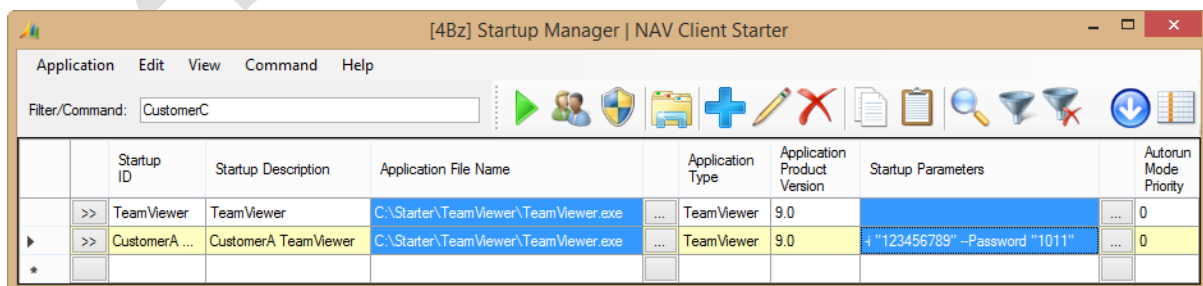
3.12 Open any File, Folder or Website

Depend on Application File Name value, you can open any File, Folder or Website:



3.13 Run any Application with/without Startup Parameters

You can run any Application with/without Startup Parameters:



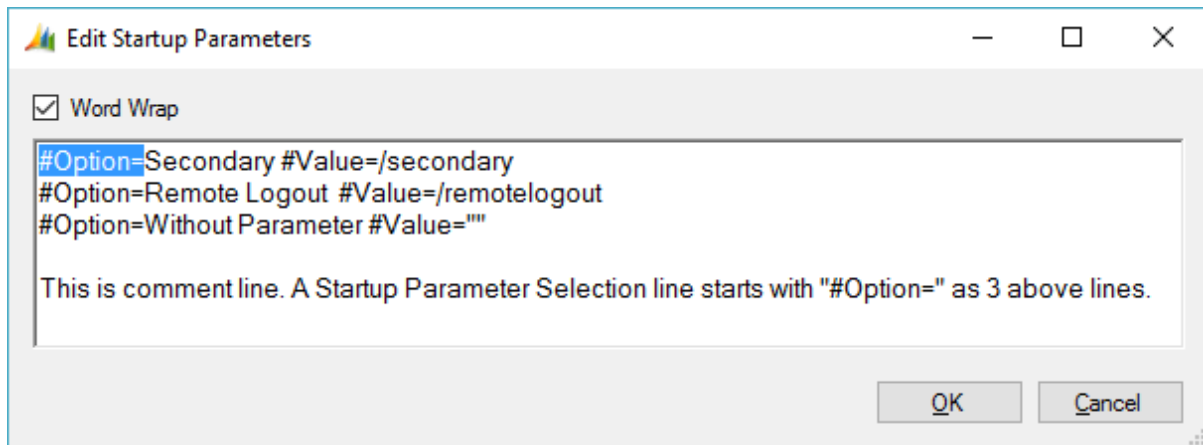
3.14 Run Application with Startup Parameter Selection

Sometimes you want to run an application with Startup Parameter Selection, for example, different NAV Profiles as Sales Manager or Sales Order Processor. To enable it, the first Startup Parameter line should start with "#Option=", other lines for selection should also start with "#Option=", format are:

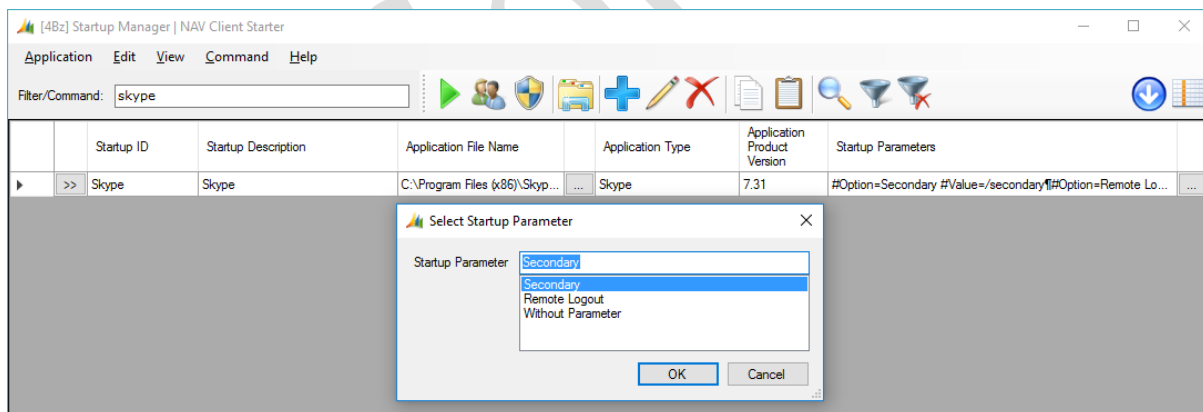
#Option=Name of Option 1 **#Value**=Startup Parameter of Option 1

#Option=Name of Option 2 **#Value**=Startup Parameter of Option 2

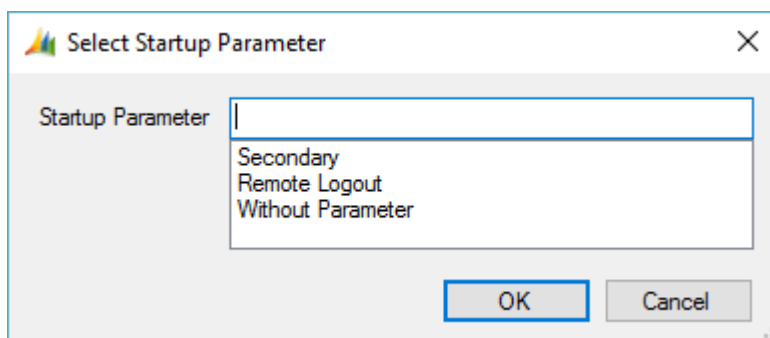
...



When run the application with Startup Parameter Selection, Select Startup Parameter dialog appear:

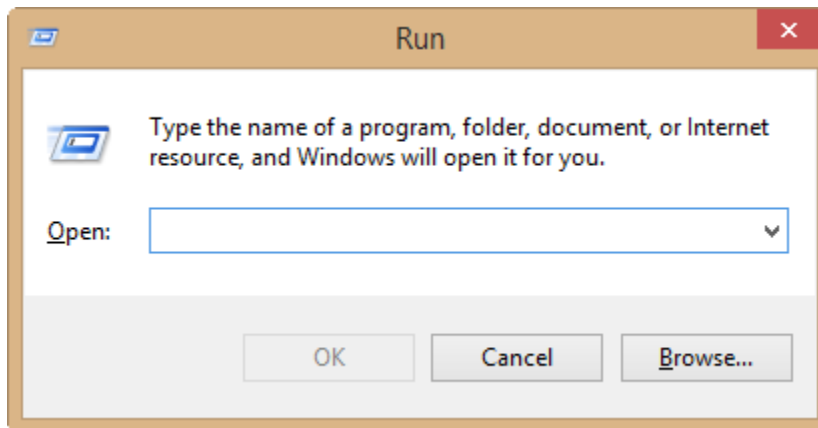


Tip: you can run the application without Startup Parameter by defining blank value (#Value="") or deleting Startup Parameter value before clicking OK button:



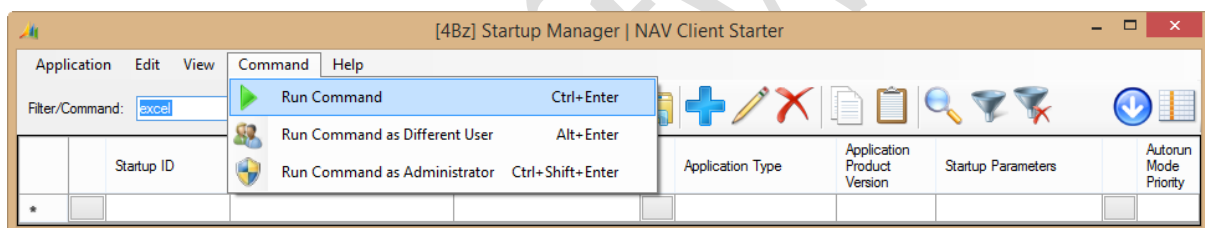
3.15 Run Command

Do you know the following dialog?

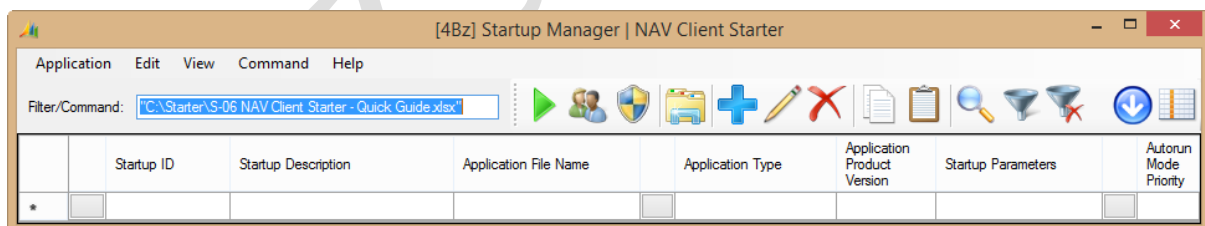


It is Windows Run dialog and we often use it to run common programs such as notepad, excel, calculator (calc), Windows command (cmd), Services Management (services.msc) ... and you can do the same in NAV Client Start.

Type in Filter/Command text box and press Ctrl+Enter to run a program, folder, document, resource:



If name of program, folder, document ... contains blank character, bound text in double quotes (""):



You can also provide parameters and use Special Paths in Command.

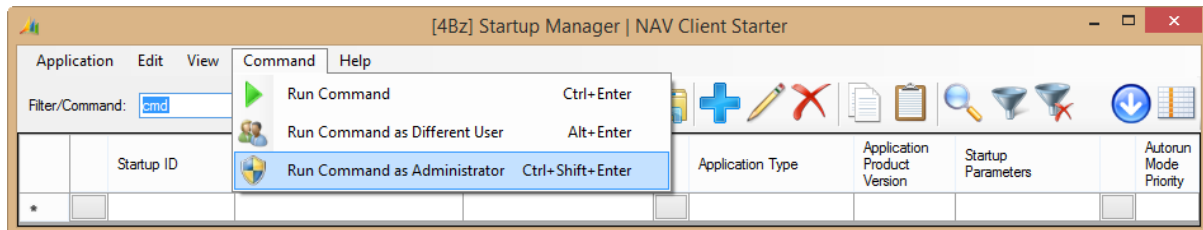
3.16 Run Command or Startup as Different User, Administrator

There are some cases:

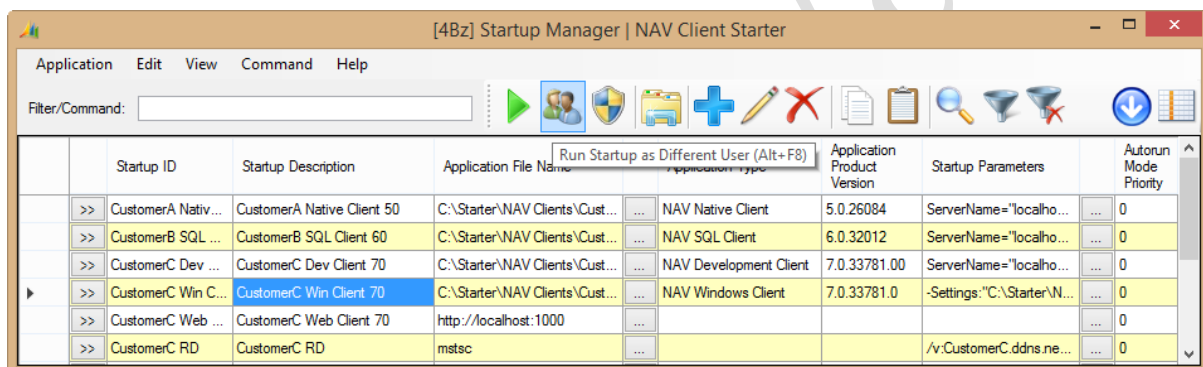
- You want to run Startup with Different User to test program.
- Run Windows Commands that need Administrator right.

You can do it in application, using both Command and Startup:

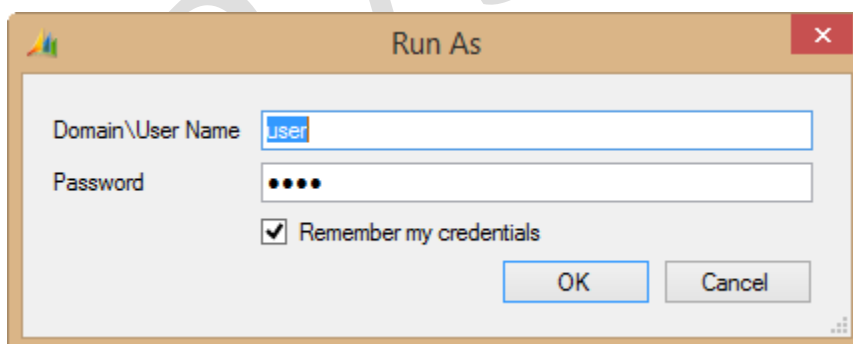
- Use Command to run "cmd" with Administrator right:



- Use Startup to run NAV Windows Client with different user:



When you run Command or Startup with different user, Run As dialog appeared:



Enter credentials and click OK to execute program.

You can check "Remember my credentials" for next times.

3.17 Common Windows Commands

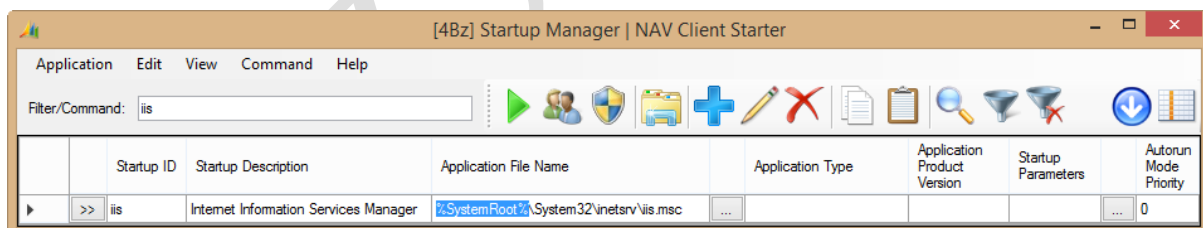
1. Windows Command Console: cmd
2. Windows Notepad: notepad
3. Windows Calculator: calc
4. Windows Remote Desktop Connection: mstsc
5. Windows Services Management: services.msc
6. Windows Management Console: mmc
7. Microsoft Office Excel: excel
8. Microsoft Office Word: winword
9. Microsoft SQL Server Management Studio: ssms
10. Connect VPN (need to create VPN Connection first):
rasdial "VPNConnectionName" "UserName" "Password"

3.18 Special Paths

Application supports below Special Paths:

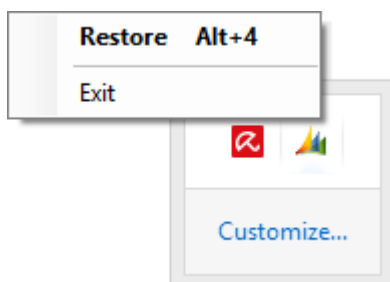
No.	Special Path	Full Path
1	%HomeDrive%	C:
2	%SystemRoot%	C:\Windows
3	%ProgramFiles%	C:\Program Files
4	%ProgramFiles(x86)%	C:\Program Files (x86)
5	%ProgramData%	C:\ProgramData
6	%AppData%	C:\Users\[User]\AppData\Roaming
7	%Temp%	C:\Users\[User]\AppData\Local\Temp

It is used in Application File Name and Startup Parameters:



3.19 Activate application anywhere by pressing Alt+4 keys

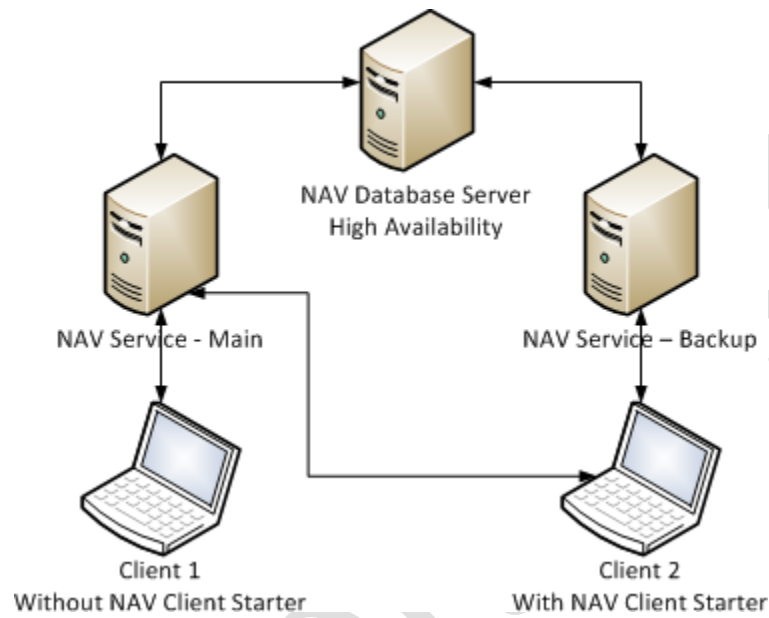
You can activate the application anywhere by pressing "Alt+4" keys, or double click the icon in Windows Notification Area:



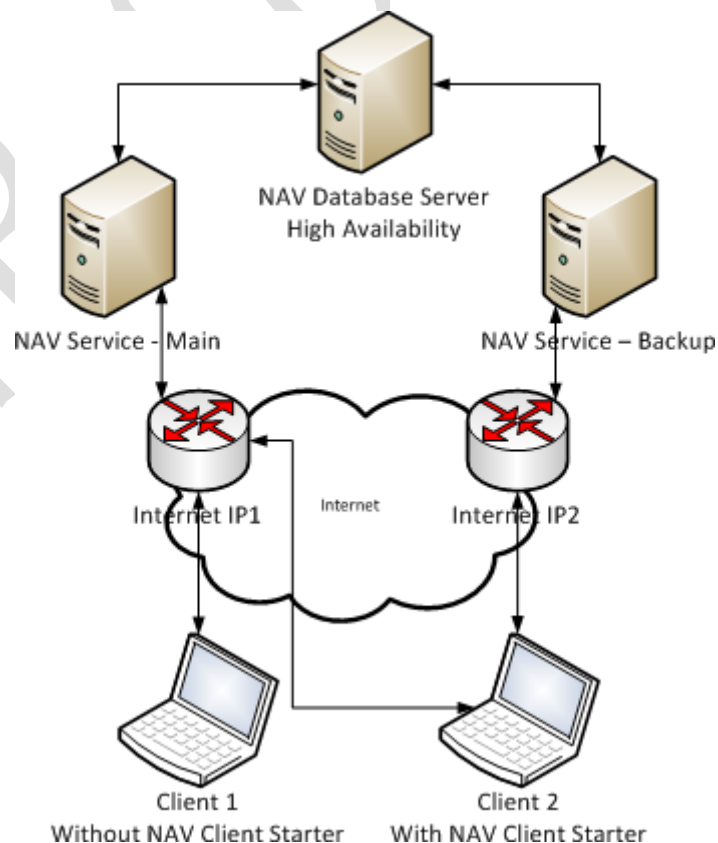
3.20 Autorun Mode for End Users with multiple backup connections

From end users perspective, they don't care either Main NAV Service Connection or Backup NAV Service Connections information. They just want to click an icon and run program for their work. They can archive it through NAV Client Starter.

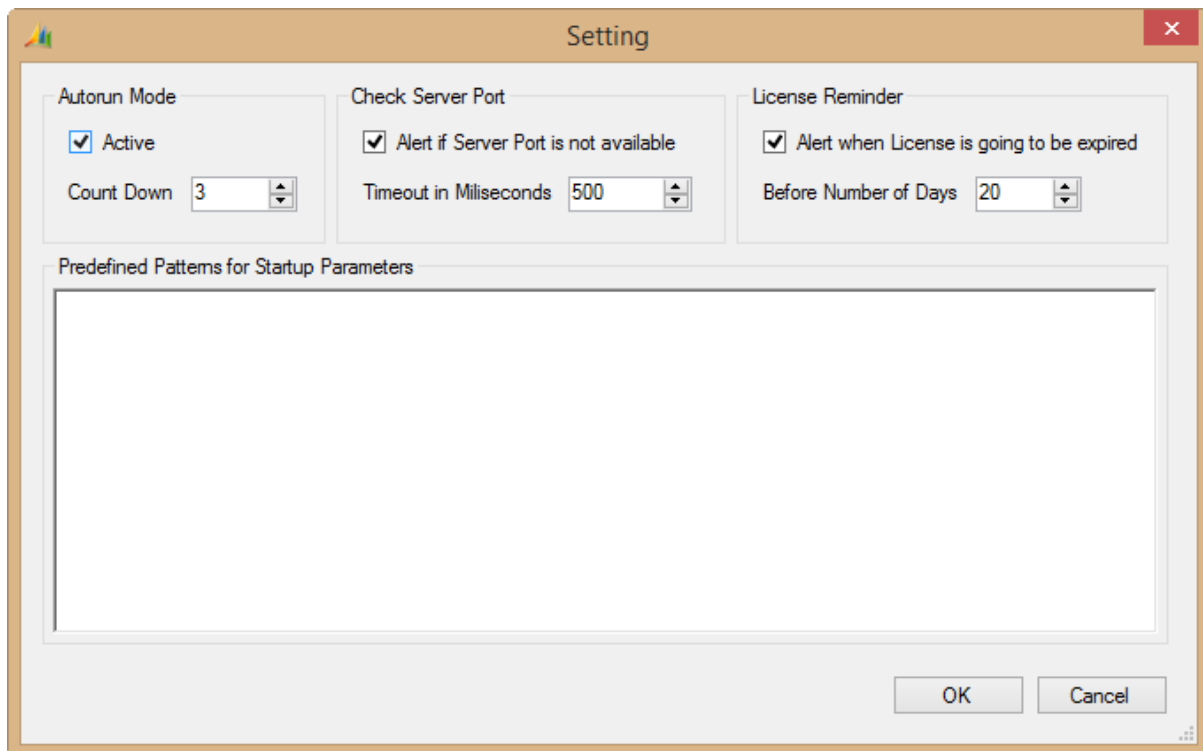
In Local Area Network (LAN) environment, "Client 2" using NAV Client Starter continues to open NAV regardless "NAV Service – Main" available or not:



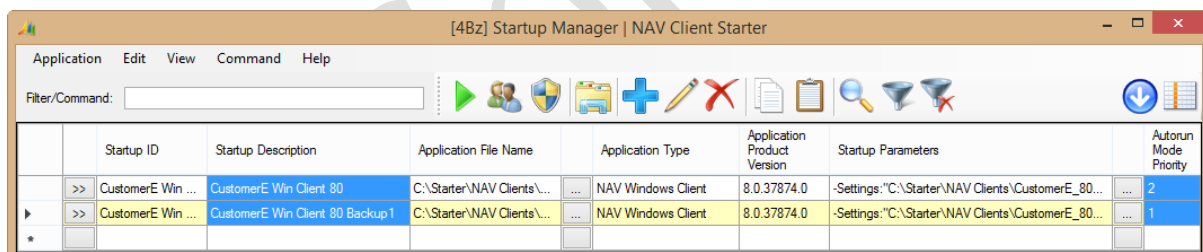
Same in Internet environment, "Client 2" uses NAV Client Starter to increase connection availability:



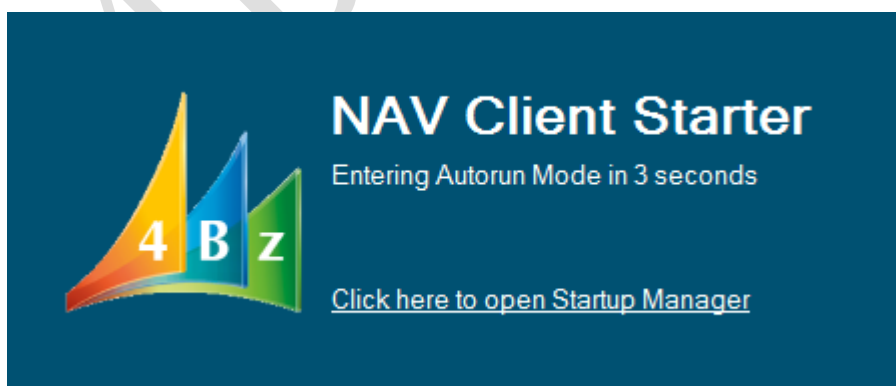
By default, Autorun Mode is activated with 3 seconds count down. You can configure it by clicking menu Application → Setting (F11 key):



Create Startups, fill in “Autorun Mode Priority” with higher number is more priority:

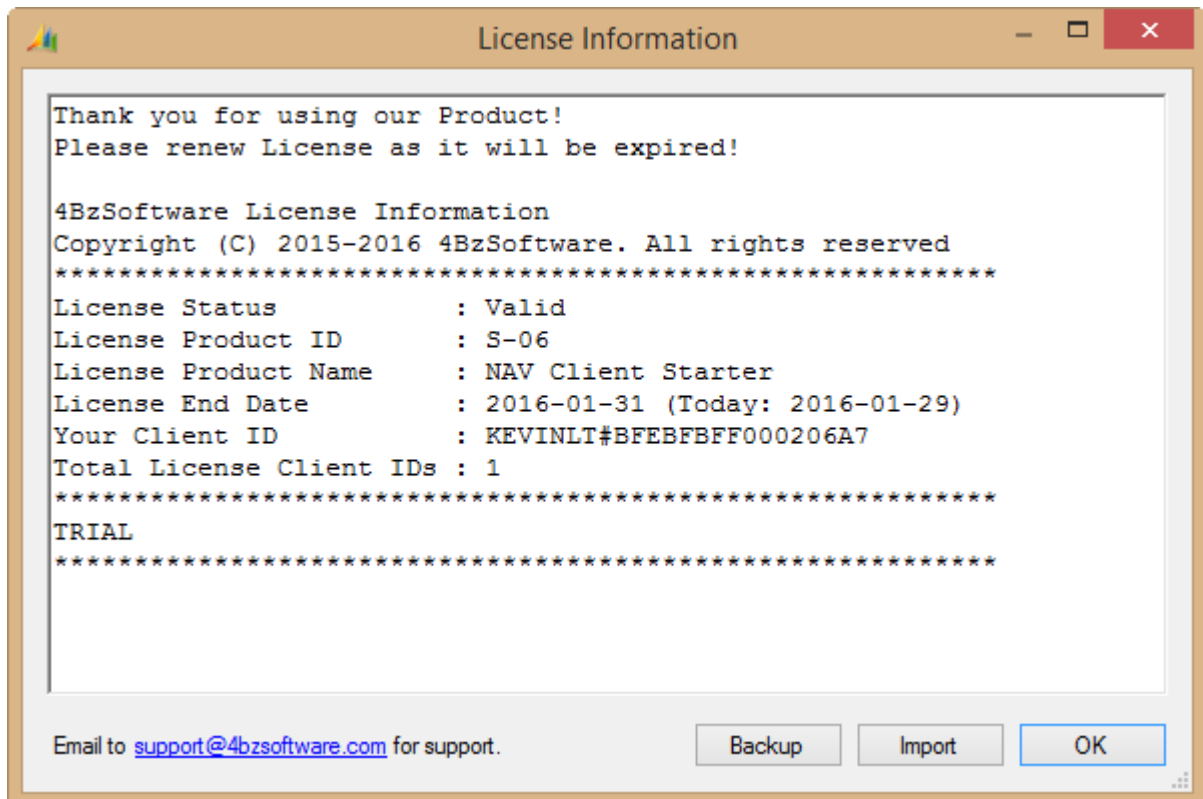


Once setup is done, re-run application to enter Autorun Mode with multiple backup connections:

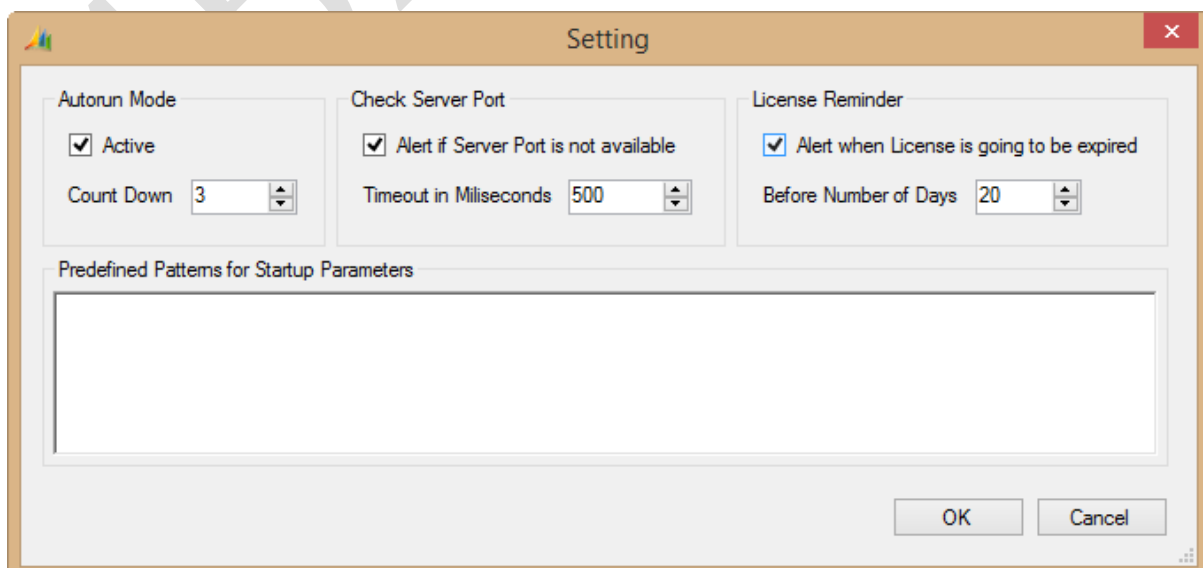
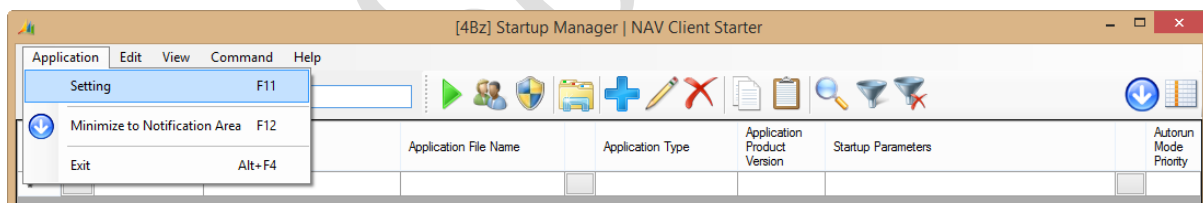


3.21 License Reminder Setting

When tool starts, it checks and reminds you of expiring License by default:

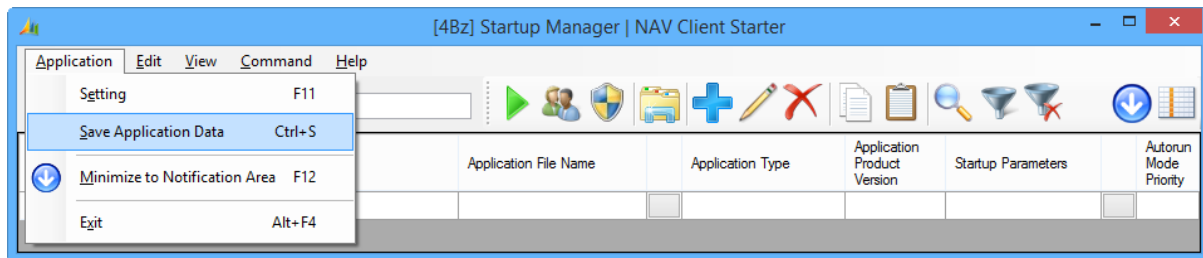


You can change these values in Application menu → Setting (F11 key) → License Reminder:

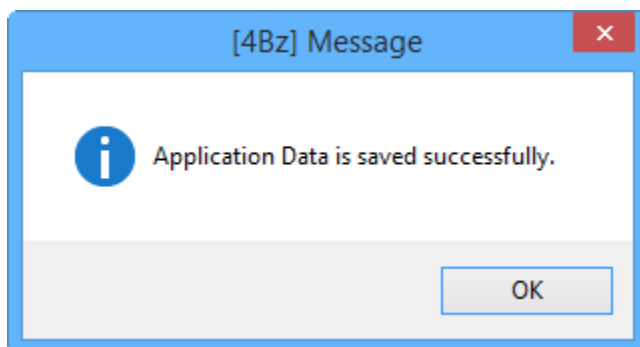


3.22 Save Application Data

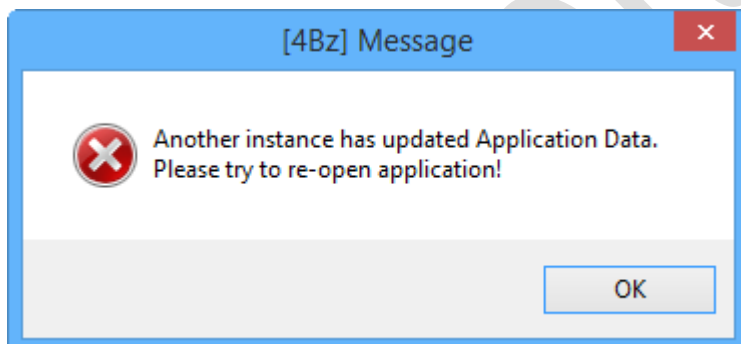
You can save Application Data by clicking Application menu → Save Application Data (Ctrl +S):



When it is saved, you will receive below message:



Otherwise, you will receive an error message explaining the issue and how to solve it:



You don't need to click Save Application Data before close the application. If there are changed settings or modified startup information, save function is invoked automatically.

4. Technical Point of View

4.1 Troubleshoot

4BZSoftware

4.2 Version Control

Version (YYMMDD)	Description
150725	Release - first version 1. Release application.
150808	Enhance - command 1. Suggest all system resources for Filter/Command text box. 2. Drag & Drop File/Folder to Filter/Command text box. 3. Remove "Insert Command Parameter Separator". 4. New method for parsing Command. 5. Apply Special Paths in Command.
160204	Enhance - features 1. Combine many PCs in one License file. 2. License detail in How to install section. 3. License Reminder Setting. 4. Common Windows Commands. 5. Run Application with Startup Parameter Selection.
160720	Enhance – features 1. Optimize code to increase performance for Load Data. 2. Application Data Version Management. 3. Update version notification. 4. Save Application Data menu. 5. List of Startup Parameters for selecting.
170120	Enhance – features 1. Optimize code to increase performance for Load, Filter and Paste Data. 2. Run Application with Startup Parameter List Selection.

5. Pricing

Please contact us via email support@4bzsoftware.com
or visit www.4bzsoftware.com/product/nav-client-starter.html

4BZSoftware

This is last page.

Thank you!