

# Infosim Idle Timer

## What the program does:

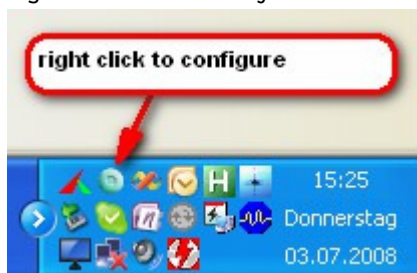
Do you know the problem of running out of licenses in Navision/Dynamics NAV caused by users who forgot to close their multiple instances of Navision/Dynamics NAV?

Infosim Idle Timer closes Dynamics NAV or other application on idle computers.

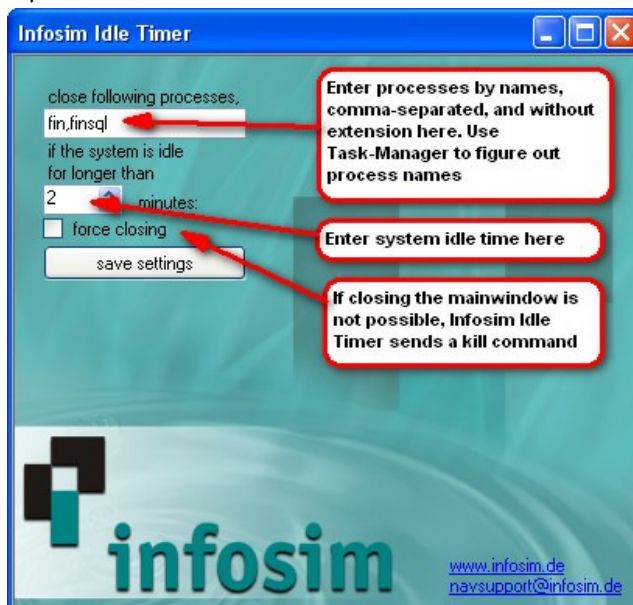
Infosim Idle Timer helps to keep your license pool free by automatically closing Navision/Dynamics NAV on idle computers. It waits in the system tray, and if the mouse has not been moved or a button has not been pressed during a defined period of time, it closes Navision/Dynamics NAV or every other application.

## Usage:

1. Run InfosimIdleTimer.exe
2. Right click on the tray icon



3. Chose Setup
4. Define the Idle Time and the processes that should be closed. Processes must be comma-separated.



5. Save settings

6. Minimize to tray
7. Optional: place a link in the auto start group
8. Have Fun!

## Problems?

Please mail us: [navsupport@infosim.de](mailto:navsupport@infosim.de)

Infosim GmbH & Co. KG  
Friedrich-Bergius-Ring 15  
97076 Wuerzburg  
Germany  
phone +49 931 20592-200  
fax +49 931 20592-209  
email [info@infosim.de](mailto:info@infosim.de)  
<http://www.infosim.de>

## Remarks

This software is the copyrighted work of Infosim GmbH & Co. KG. Its use may be governed by the provisions of a license agreement that accompanies or is included in the software. You may only download, install and use this software in accordance with the terms of this license agreement and you agree not to modify the software in any manner or form or to reverse engineer, reverse assemble or otherwise attempt to discover the source code of the software. Your use of this software is entirely at your own risk.