



Anveo EDI Connect

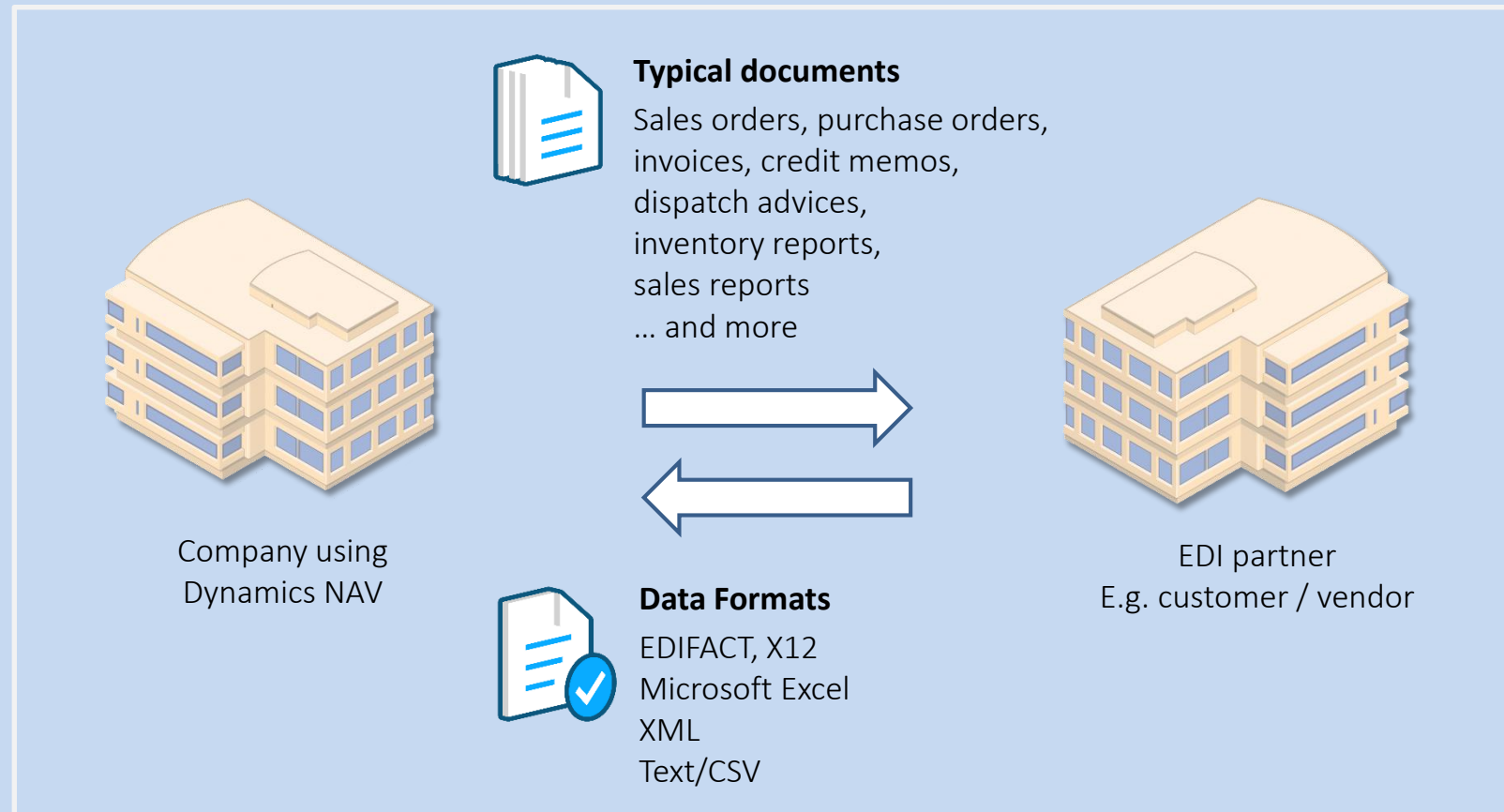
for Microsoft Dynamics® NAV

Features

What is EDI?

Electronic Data Interchange in Microsoft Dynamics NAV

Automatically communicate with your business partners via Anveo EDI Connect



Features

License

Services

Anveo

Anveo EDI Connect

All you need is combined in one product

Four components of Anveo EDI Connect

EDI SETUP

Definition of data transformation takes place in Microsoft Dynamics NAV.

ASSISTANT

Automatically detects message structure of EDIFACT, XML and X12.

CONVERTER

Transform your data directly in Microsoft Dynamics NAV – without the need of external software.

DATA TRANSFER

Transfer your data to EDI partners and keep control with EDI message control center.

- ✓ Electronic data interchange between business partner.
- ✓ Send and receive business documents.
- ✓ Keep control over your EDI data in Dynamics NAV.
- ✓ Dynamics NAV converter to process any data formats.
- ✓ Inter company posting feature for any documents.

Features

License

Services

Anveo

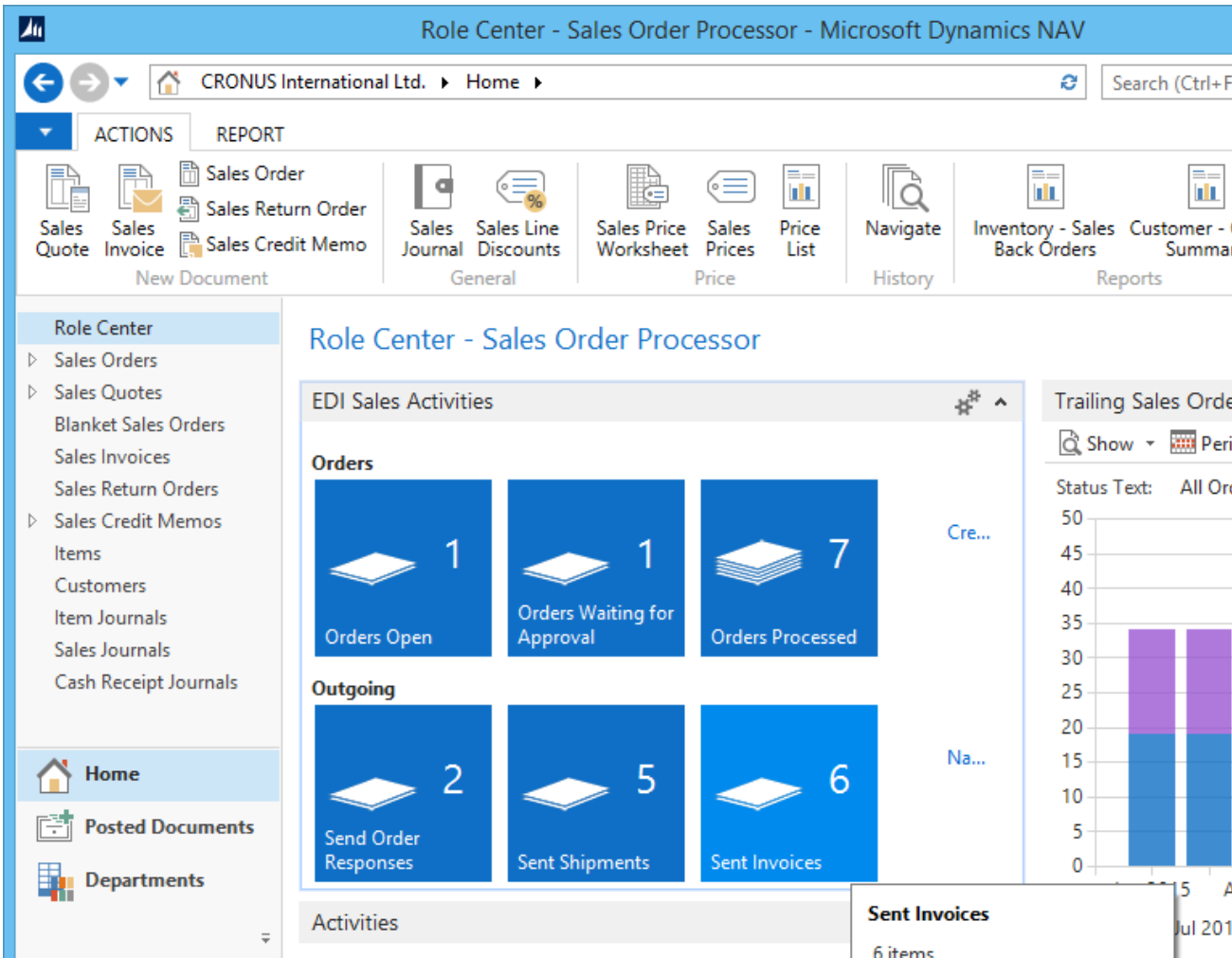
Message Control Center

Keep your EDI messages under control

The Anveo Control Center clearly shows incoming and outgoing EDI messages.

You will be informed about data transformation problems. Direct links to the corresponding EDI messages helps you solve issues.

Tailor the Anveo Message Control Center to your needs with the power of Dynamics NAV.



EDI Assistant

Automatically create EDI document structure

Save valuable time by extracting the data structure from example files

This is unique

The Anveo EDI Connect setup assistant interprets the EDIFACT, X12 and XML data structure from your example files.

All EDIFACT formats/standards are supported

The message structure is automatically interpreted for UN/EDIFACT formats like D96A. All other formats can be also read by its generic detection.

EDI set-up in just a few minutes

The Anveo EDI Connect assistant significantly reduces your setup time. Define your EDI data structure with just a few mouse-clicks.



Features

License

Services

Anveo

EDI Setup

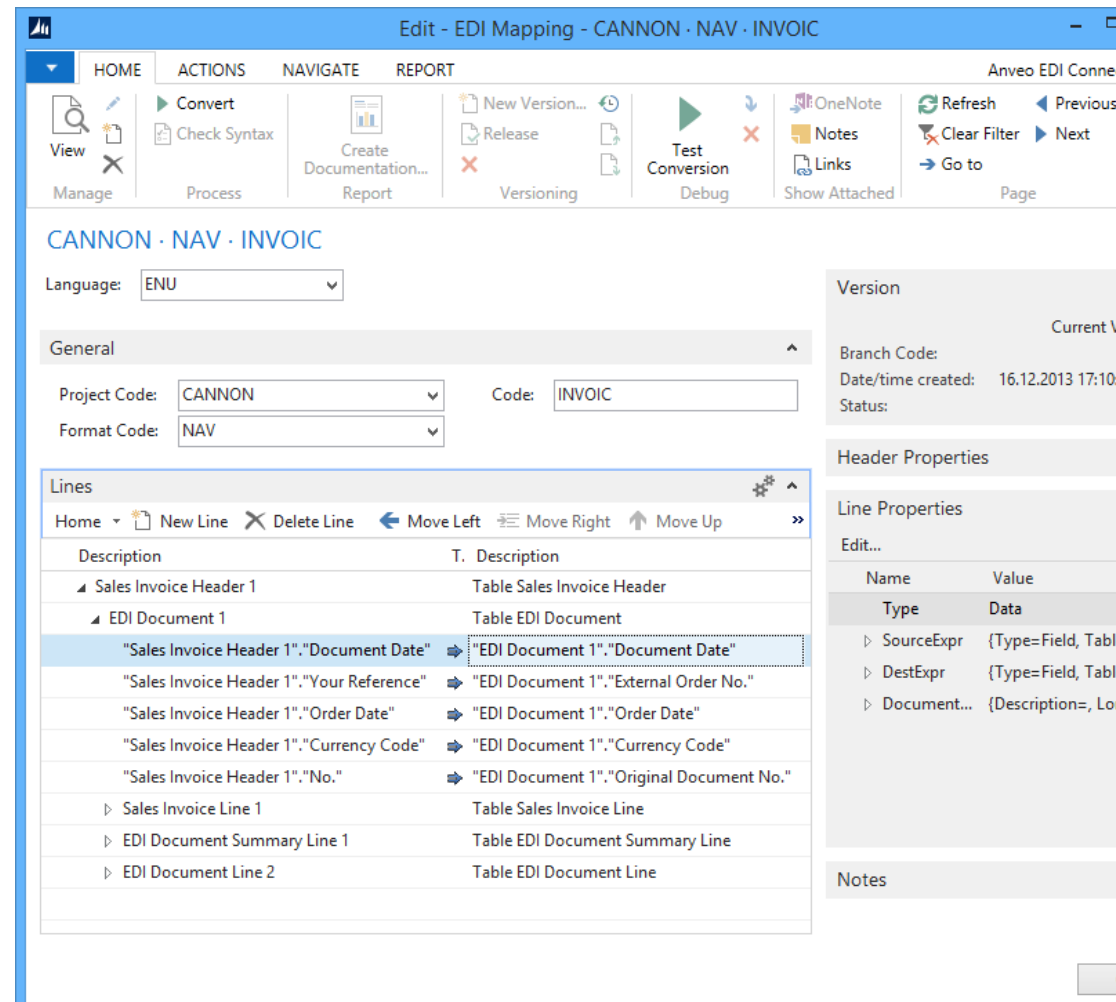
Simple definition of data transformation realized in Anveo EDI Connect

Anveo EDI Connect is an add-on for Microsoft Dynamics NAV and is fully set up and operated from there. Simply define your data transformations by mouse-click.

No external converter or additional service provider required to transform XML, EDIFACT and X12 data.

Microsoft's Dynamics NAV service tier does all data transformations (or the Classic Client).

System requirement is Dynamics NAV 5 or newer (application). Anveo EDI Connect also runs with previous database versions.



License

License

Anveo EDI Connect

The **Base Package** includes all Anveo EDI Connect core features. Extend this license by your required number of **EDI Mappings**. Feel free to choose between different licensing options:

1 EDIFACT/X12
EDI mapping

€ 500

10 XML
EDI mappings

€ 500

10 Text/CSV
EDI mappings

€ 500

OR

Unlimited EDIFACT/X12, XML and Text/CSV
Unlimited number of EDI mappings

On Request

+

BASE

The base package includes all core features.

€ 2.000

Setup in
Windows Client

Assistant for
data structure

Control center
and **converter**

Version control
and **debugger**

Data transfer
file, email, FTP

Features

License

Services

Anveo

Anveo Subscription License

Rent Anveo EDI Connect

Get the full power of Anveo EDI Connect with a flexible license model

Benefits using Anveo Subscription

Low invest

Change your license to your demands on a monthly base

Service plan for updates is already included

Minimum contract term is just one month

€ 2

per day and
per 10 XML mappings
per 10 text/CSV mappings
per 1 EDIFACT/X12 mapping

Features

License

Services

Anveo

Services

Services

All services in detail

Anveo provides full service for your EDI requirements. Choose your service level:

CLEARING

Service on hourly basis (15 minutes minimum / request)
Optional: Fixed price per month, request a quote after 4th month

CONFIGURATION

Setup of EDI mapping for data transformation

INSTALLATION

Install Anveo Connect on Dynamics NAV database

DATA TRANSFER

Set-up of SMTP/POP3 data transfer in Dynamics NAV

All Anveo services are optional.
These services can also be provided by the Dynamics NAV partner or by the IT of the company using Dynamics NAV.

Features

License

Services

Anveo

Services

Anveo services configuration and clearing

Detailed definition of Anveo services

Configuration

Setup of data transformations between external message format and the Dynamics NAV data structure using Anveo EDI Connect.

- Setup of one Anveo EDI mapping
- A detailed data format description of internal and external data format and an example file is required and must be provided to Anveo.
- Communication services (e. g. phone calls/emails with customer or partner) is limited to eight hours.
- Additional services on an hourly basis.

Clearing

Ensures data transformations within Anveo EDI Connect.

- Detect data transformation errors and solve them in case of technical reasons.
- Email notification is sent to the Anveo clearing center in case of errors.
- Update of EDI document type in the case of light data transformation updates.
- Setup and vast updates of data transformation are not part of clearing. These are configuration services.
- Service level: guaranteed start within four hours after receiving an error message at Anveo clearing center during business hours (Mon-Fri, 8am-5pm, CET)
Fixed time to solve error cannot be guaranteed due to widely differing workload required.
- Other service levels available on request.

Services

Training, Service plan and Support

Anveo provides high quality support and services to ensure excellent solutions

TRAINING

One day personal or online training: 8 hours plus accommodation and travel expenses.

SERVICE PLAN

16% of license value / year

Get access to the newest Anveo release
Mandatory for Anveo services like configuration and clearing as well as license enhancements.

Support included in your license package for Dynamics NAV partners

Technical questions regarding installation, and configuration.

BASE Package

2 hours

UNLIMITED Package

15 hours

Additional support on demand
15 minutes minimum/incident.
Included support hours must be used within 6 months after license order.

Features

License

Services

Anveo

Anveo

The Anveo product family provides powerful add-ons for Microsoft Dynamics NAV.

Anveo is sold worldwide through the Dynamics NAV partner channel to more than 90 Anveo partners.

MOBILE APPS

Create your individual, full offline-capable app directly in Microsoft Dynamics NAV.



WEB PORTALS

Web client for portal solutions and limited access users based on NAV 2009/2013.

EDI

Electronic Data Interchange 100% powered by Dynamics NAV. Experience EDIFACT/X12 without any external converter.

AnveoNAV.com

info@AnveoNAV.com

Phone

EMEA +49 (0)40 / 432 82 46 86

US (813) 778-5336

Anveo® is a registered trademark of conion media GmbH · Fruchtallee 23a · 20259 Hamburg, Germany

Copyright conion media GmbH · Fruchtallee 23a · 20259 Hamburg · Germany. All rights reserved. Unauthorized reproduction is prohibited, even in the form of excerpts. No claim whatsoever exists in terms of correctness or completeness. The right to make changes is reserved, even without prior announcement. Microsoft, Microsoft Dynamics and the Microsoft Dynamics logo are either registered brand trademarks or brand trademarks belonging to the Microsoft Corporation in the USA and/or in other countries. All other corporate names and product names stated in this document are possibly brand trademarks belonging to the respective legal proprietors. Anveo® itself is protected as a name and logo at Deutsches Patentamt, the German Patent Office, as a so-called word/picture brand.