



# Manual

## NAS Manager

---

## Table of contents

1	Introduction.....	4
2	Installing NAS Manager.....	4
3	Configuring NAS Manager .....	4
3.1	The NAS Manager Configuration Tool – NASMgrConsole .....	4
3.1.1	NAS Service Name.....	5
3.1.2	NAS configurations .....	6
3.2	The NAS Manager Service .....	7
3.3	Using the Event Log .....	7

Version Manual	Description	Owner	Product Version	Date
1.0	Initial document	IDYN	1.0	26-5-2011

IDYN BV  
Castle Dussen  
Binnen 1  
4271 BV Dussen  
The Netherlands

Phone number: +31 (0)85 – 111 00 27  
Fax number: +31 (0)84 – 835 63 50  
E-mail: [info@idyn.nl](mailto:info@idyn.nl)  
Web: [www.idyn.nl](http://www.idyn.nl)



---

## 1 Introduction

This document is a description for users on how the NAS Manager works. It is not intended to be complete or extensive, but only will describe main functionality and features that are found in NAS Manager.

NAS Manager is a tool that allows you to run a NAS in various ways without installing an extra NAS. This can really benefit you in terms of cost efficiency, because it will not require an extra NAS license for Microsoft Dynamics NAV.

NAS Manager is built to run with SQL NAS'es only. It will not work with C/Side NAS'es.

It can be setup to run various tasks. It will start a task process this during a period of time which can be setup in the NAS Manager and then move on to the next task. When all tasks are processed, the NAS manager goes back to the first task and performs all tasks again.

Multiple NAS'es can be configured with NAS Manager. This means that NAS Manager is also multi-threaded allowing every NAS to be scheduled differently. Complex setups are possible using multiple NAS'es to ensure you have maximum performance with a minimum of NAS'es and their costly licenses.

## 2 Installing NAS Manager

You have received the installer from either IDYN or your partner. This installer is a straightforward next, next, finish installation. It provides all that is needed to setup NAS Manager on your machine.

## 3 Configuring NAS Manager

NAS Manager consists of two parts.

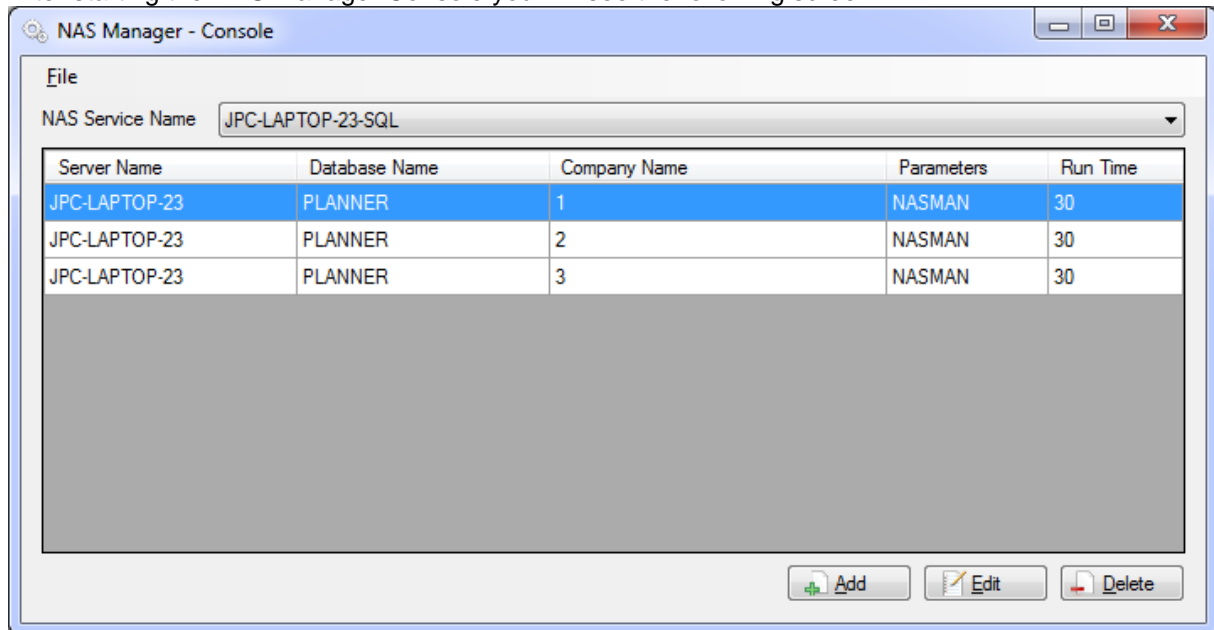
1. The configuration tool.
2. The actual NAS Manager Windows Service.

### 3.1 The NAS Manager Configuration Tool – NASMgrConsole

This configuration tool basically allows you to setup all the NAS'es that will be used with all their specific configurations. NAS Manager can handle multiple NAS'es and per NAS multiple configurations. This allows maximum flexibility to optimize your system.

After installing the NAS Manager you can start the NAS Manager Console from the start menu. Please note that the NAS Manager Console requires you to have elevated privileges on machines with operating systems running UAC (Windows Vista, 7, 2008, and 2008 R2).

After starting the NAS Manager Console you will see the following screen



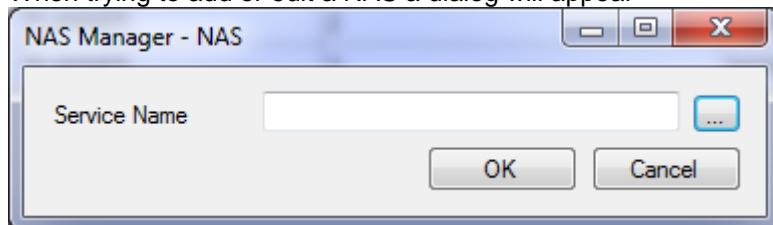
The screen consists of two parts.

1. Name of the NAS Service (the combo box)
2. The configurations that the NAS Service will be running. (the grid)

### 3.1.1 NAS Service Name

This will allow you to select the NAS you wish to configure. By going into the File menu you can add, edit, and delete NAS'es. After selecting the correct NAS you will see the configurations in the grid being updated.

When trying to add or edit a NAS a dialog will appear



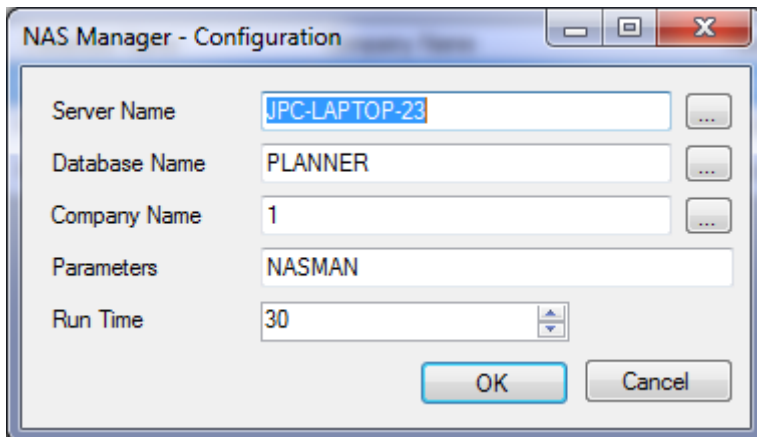
The lookup button ("...") behind the Service Name textbox will allow you to lookup the NAS'es installed on the system.

### 3.1.2 NAS configurations

This grid part displays one or more configurations. Each configuration consists of the parameters needed to run the NAS correctly.

1. Server Name  
this is the SQL server (instance) name this NAS will be servicing.
2. Database Name  
this is the database name this NAS will be servicing.
3. Company Name  
this is the company name the NAS will be servicing.
4. Parameters  
this the parameters you supply to the NAS to perform the tasks it needs to perform.
5. Run Time  
Since a NAS has no means of reporting back if a task is completed you need to supply when you wish to switch to the next configuration. This parameter in the configuration says how long (in seconds) the NAS configuration should be running before terminating and moving on to the next configuration.

To add, edit, or delete a configuration you can use the file menu or the button in the lower right corner. The configuration screen appears when you choose to add or edit a configuration.

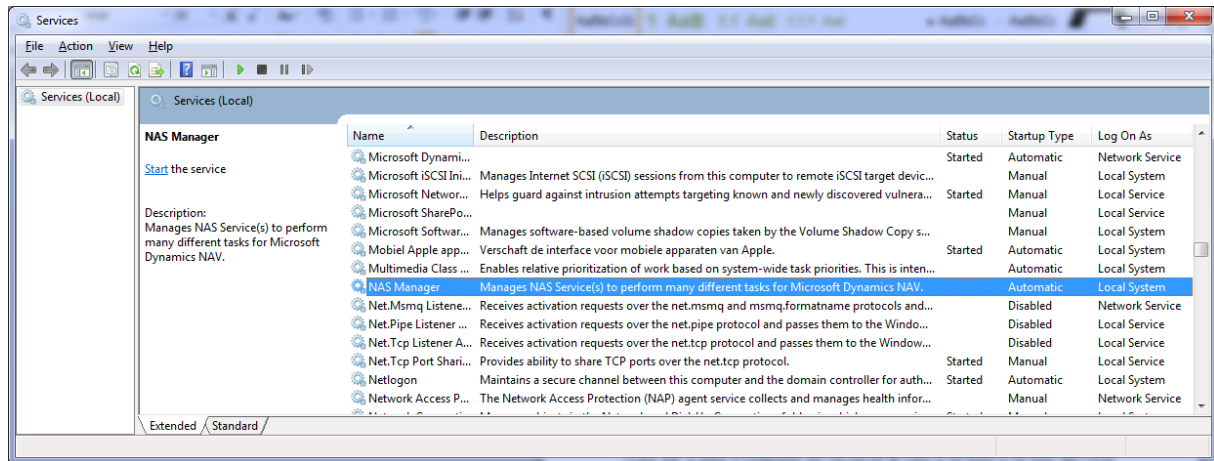


The lookup (“...”) buttons behind the textboxes on this screen you will have lookup functionality to help you select the server name, database name, and company name.

Please note: you must have SQL database access based on your windows logon to use the database name and company lookups.

### 3.2 The NAS Manager Service

After installation the NAS Manager Service will be visible in the Services control panel on the machine you installed the NAS Manager.



Please note: the service is installed to run as LocalSystem. It is advised to leave this as is. This is because the user running the NAS Manager will be starting and stopping the NAS'es. Elevated privileges are required for this as well as the Start and Stop services policy. LocalSystem has this privilege by default.

The NAS'es must be installed on your system already by using the tools that you use normally. NAS Manager at this time does not install or remove any NAS'es for the services control panel at all. Please make sure that user login and other details are setup properly to ensure proper access to the NAV database by the NAS. Also we advise the NAS'es that are used by the NAS Manager not to automatically startup NAS Manager starts and stops NAS'es and this could cause conflicts.

Please note: it is currently not possible to switch the services user account (the user that is running the NAS) while switching a configuration.

### 3.3 Using the Event Log

All NAS events are logged normally like using a regular NAS. This ensures you have all feedback needed to see if the NAS will start correctly. Also the NAS Manager writes into the Event Log to enable you to see if any error occurred and the current status of the service.

It logs:

1. Starting of the NAS Manager Service.
2. Starting of a NAS setup. Per NAS you will be notified of this.
3. Closing of a NAS setup - when stopping the NAS Manager
4. Stopping the NAS Manager Service.
5. Any exception that may while the NAS Manager is running