

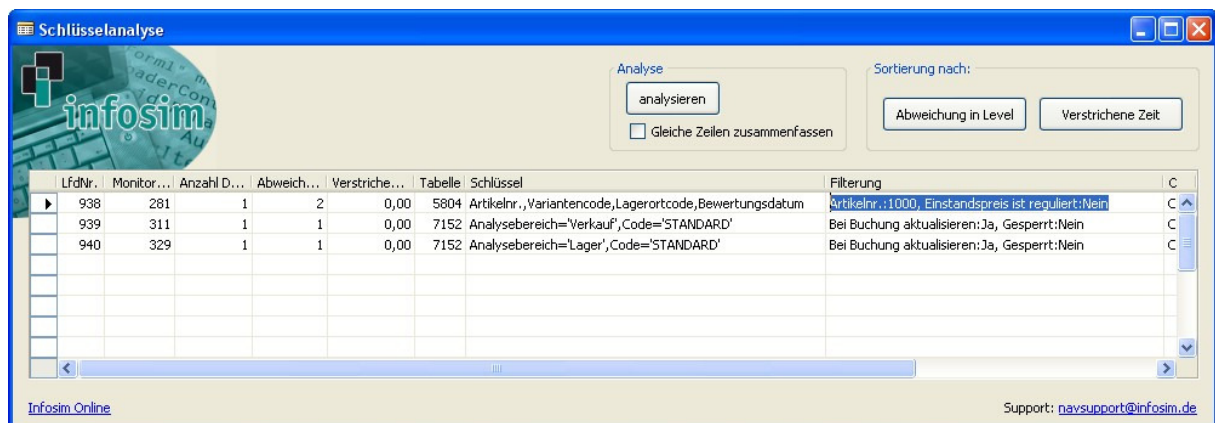
Infosim Key analysis

Overview

This tool helps to analyze the result of the Dynamics NAV/Navision Client Monitor for suboptimal keys. With this information you can optimize and speed up slow processes or reports such as "Adjust Cost - Item Entries" for a specific company.

The basic idea of this tool is that it is much worse if a key differs from the used filter in the first field than in the last one. So the Key analysis tool separates the deviation in levels. A deviation at level 1 is very bad, where a deviation at level 5 doesn't matter in most of the cases. Furthermore the time cost of a line in the code is summed, if the line is executed multiple times, for example in a loop. You can see in the figure that a deviation at level 4, that is executed 1000 times, is a more critical factor for the performance than a deviation at level 3 that is executed 1 times.

After analyzing a specific procedure, you can optimize the performance by adding better keys. Note that even not all standard procedures are using optimal keys, so there is a lot of potential to increase performance. E.g. sometimes key's are disabled by default, but this behavior is not documented. With Infosim Key analysis tool you are able to find them.



Installation

1. Import the Objects (3)
2. Run Form 90300

Usage

1. Run the „Client Monitor“ (Tools -> Client Monitor)
2. Make sure that the „Client Monitor“ is empty (delete all lines)
3. Start the „Client Monitor“ by pressing Start
4. Run the procedure which has to be tested e. g. „Adjust Cost Item Entries“
5. Stop the „Client Monitor“
6. Start the Infosim Key analysis tool (Form 90300)
7. Press the button „Analyze“. If you like, activate the option „Combine equal lines“.

8. The result can be sorted by “Deviation at Level” or “Elapsed Time” by pressing the specific buttons.
9. Important for an optimization are the above-named fields. “Deviation at Level” means the first hit of an attribute that is inexistent. “Elapsed Time” is the time that was needed for a result set.

Problems?

Please mail us: navsupport@infosim.de

Infosim GmbH & Co. KG
Friedrich-Bergius-Ring 15
97076 Würzburg
Germany
phone +49 931 20592-200
fax +49 931 20592-209
email info@infosim.de
<http://www.infosim.de>

Remarks

This software is the copyrighted work of Infosim GmbH & Co. KG. Its use may be governed by the provisions of a license agreement that accompanies or is included in the software. You may only download, install and use this software in accordance with the terms of this license agreement and you agree not to modify the software in any manner or form or to reverse engineer, reverse assemble or otherwise attempt to discover the source code of the software. Your use of this software is entirely at your own risk.