

ENHANCE

Microsoft Dynamics NAV 2009

The Style Sheet Tool for Microsoft Dynamics NAV

Version 2.0

User's Guide

The Style Sheet feature in Microsoft® Dynamics™ NAV 2009 has been enhanced with an updated version of the Style Sheet Tool that allows you to easily create and modify style sheets in Microsoft® Office Word® without programming knowledge.

This document describes the new features that have been added and how to implement these features.

Date: June, 2009

www.microsoft.com/dynamics/nav



Table of Contents

Compatibility with the Role Tailored Client	3
Conversion Tool.....	3
Updating Pages for the Style Sheet Tool.....	4
Style Sheet Tool Setup.....	5
Changes to the Style Sheet Card.....	5
DataLinks	7
Use Default Language.....	7
Downloading Files	7
Word-Like Date Formatting.....	8
Default setting for Include Captions	9
Mail Merge Document Properties.....	10
Style Sheet Tool Objects	11
Miscellaneous Code Changes	11
Compatibility with NAV 5.0 SP1	11

Compatibility with the Role Tailored Client

The main focus of this update of the Style Sheet Tool version 2.0 was to add support for the Role Tailored Client in Microsoft Dynamics NAV 2009. This entails updating the pages with a new action for the Style Sheets, capturing new information regarding the page that the style sheet should work with and new setup information.

Conversion Tool

A conversion tool (**Codeunit 50000 - Update Pages for Style Sheets**) has been written to update all List, Card, Document and Worksheet pages in the database. The conversion tool will add a selection to the Action menu on the Role Tailored Client (See Fig. 1) which will enable the user to select the desired style sheet just they were able to in the Microsoft Dynamics NAV 5.0 classic client.

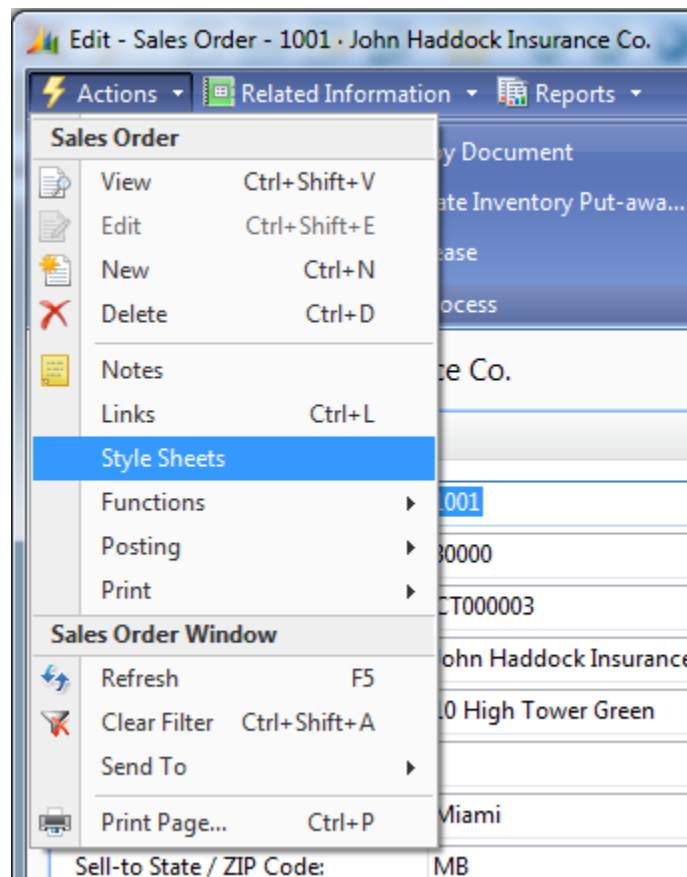


Fig. 1 – Action Menu from a Sales Order showing the Style Sheets selection.

Below, you will find a list of steps that will walk you through the entire conversion process.

Updating Pages for the Style Sheet Tool

- 1) Import the New Style Sheet Tool V2.0 objects.
 - a. Open the Object Designer (Shift+F12).
 - b. Select the **File** Menu (Alt+F).
 - c. Select the **Import** option from the File Menu.
 - d. An "Import Objects" dialog box will be displayed. Select the location where you placed the new Style Sheet Tool V2.0 objects.
 - e. Click on the **Open** button.
- 2) Export all Pages from the Microsoft Dynamics NAV 2009 database.
 - a. Open the Object Designer (Shift+F12).
 - b. Click the **Page** button.
 - c. Once the list of Page objects are displayed, select all the Page objects Listed (Ctrl-A).
 - d. Select the File Menu (Alt+F).
 - e. Select the Export option from the File Menu.
 - f. An "Export Objects" dialog box will be displayed. Select the location that you would like to save the Page objects. Before you click on the Save button, make sure to change the "Save as type" option to **"XML Format (*.xml)"**. Please note the location where you saved the XML file. You will need this in Step 3 and Step 4.
- 3) Convert the Pages to include the Style Sheets selection.
 - a. Open the Object Designer (Shift+F12).
 - b. Click the **Codeunit** button.
 - c. Once the **Codeunit** objects are displayed, Find **Codeunit 50000 - Style Sheet Tool-Update Pages**.
 - d. Highlight **Codeunit 50000** and click the **Run** button at the bottom of the Object Designer.
 - e. The "Select a XML Object File to import" dialog box will display. Locate the Pages XML file that you exported in Step 2.
 - f. Click Open.
 - g. When the conversion is done, a file with '-SST' will be created in the directory where the Page object XML file was located.
- 4) Import the updated Pages.
 - a. Open the Object Designer (Shift+F12).
 - b. Select the **File** Menu (Alt+F).
 - c. Select the **Import** option from the File Menu.
 - d. An "Import Objects" dialog box will be displayed. Change the "File of type" selection to the **"XML Format (*.xml)"**. Change the directory to the location where you saved the **Page** objects XML file.
 - e. Once you find the XML file, click on Open.
 - f. The Import process will begin.
 - g. When it has completed, go back to the Object Designer (Shift+F12) and click on the **Page** button.
 - h. Select all the Page objects (Ctrl-A) and press the F11 key to compile the objects.
 - i. Once this has completed the converted Page objects will be ready for use.

Style Sheet Tool Setup

Now that the Pages have been updated, let's take a look at some of the other changes to the Style Sheet Tool that enables the Role Tailored Client to work. First, we need to look at the Style Sheet Tool setup. A new tab – Role Tailored Client - has been added to the Style Sheet Tool setup form. There are two new fields that have been added ...

NAV Server Computer Name	This is the name of the NAV Server computer that you connect to with the Role Tailored Client. It will default localhost .
NAV Server Service Name	This is the name of the NAV Server service that you connect to with the Role Tailored Client. It will default to DynamicsNAV .

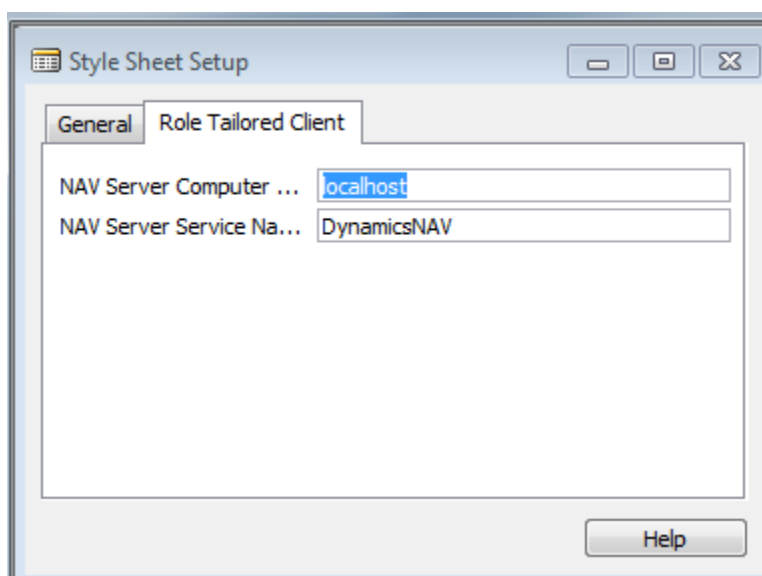


Fig 2. – The Role Tailored Client tab in the Style Sheet Tool setup.

Changes to the Style Sheet Card

You will also notice that when you create a new Style Sheet Card or edit an old one, there are new fields to capture the Page No. and Page Name. This means that you can have Style Sheets that will work for Forms and/or Pages. The Style Sheet functionality has also been enhanced here as well. If you decide to add a new Form or Page to an existing Style Sheet card that already has a Style Sheet created, you will be prompted to update the Manage Style Sheets. The converse also holds true - if you create a Style Sheet card that has both a Form and Page defined and you have already created the Style Sheet for it, then remove either the Form or Page from the card you will be prompted to remove the Style Sheet for either the Form or Page from the Manage Style Sheets.

DataLinks

The DataLinks option on the Style Sheet card, when used in conjunction with the released version of Microsoft Dynamics NAV 2009, does not work correctly. When you click on the DataLinks from Microsoft Word, a new Microsoft Dynamics NAV 2009 session is started. Fortunately, there is a fix for this issue. You can request [KB 971173](#) and apply the program changes. These changes will make the DataLink work as it has in the Classic client and reuse the current connection to the database if it exists – otherwise it will create a new session.

Use Default Language

Now there is one feature that no longer works with the Style Sheet Tool when you used with the Microsoft Dynamics NAV 2009 Role Tailored Client. This is the **Use Default Language** option. This is because there was a fundamental change between how the Classic Client and the Role Tailored Client implement the language layers. With the Classic Client, you were able to change the Language layer on the fly and thus enabled the Style Sheet Tool to change the language of the captions on the fly as well. With the Role Tailored Client you need to restart the client when you change the language layer. Therefore, there is no way for the Style Sheet Tool to change the language of the captions any more. The captions will always come out in the language layer of the user.

Downloading Files

There is a new prompt that the user will encounter while using the Role Tailored Client. The user will get a message (Fig. 5) indicating that “Windows can’t open this file:”. The message is referring to the Style Sheet that is being downloaded from the NAV Server to the Role Tailored Client.

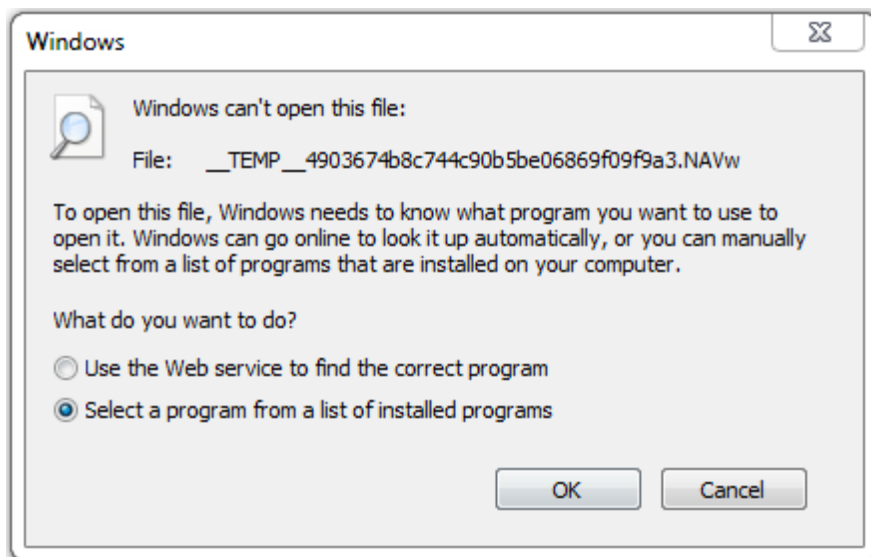


Fig.5 – Message window from the Microsoft Dynamics NAV Server during the download of the Style Sheet.

The easiest way to manage this message is to associate the **NAVw** extension with the Microsoft Word application. This will tell the operating system what to do when the user wants to open this type of file.

The user should select the option “Select a program from a list of installed programs”. This will give the user the following message (Fig. 6). If the user selects the “Always use the selected program to open this kind of file” option, then they will not see this prompt any longer and Microsoft Word will automatically open when the style sheet is downloaded.

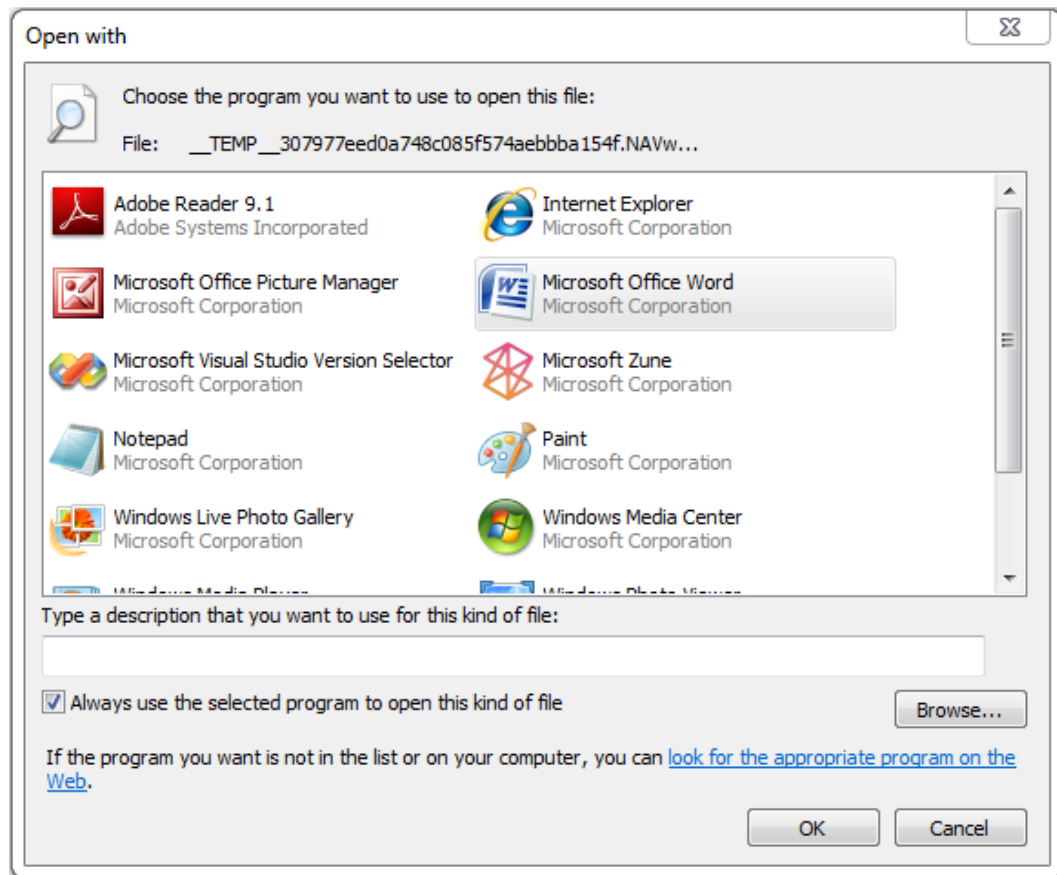


Fig. 6 – Application selection window from Microsoft Windows.

Another option is to associate the file extension with Microsoft Word through the operating system. If the user is using Microsoft Windows XP or Microsoft Windows Server 2003, then the file association can be made by going to the Start button and selecting the Control Panel. Once the Control Panel is open, select the Folder Options program. In the Folder Options program is a File Types tab. On this tab you can associate the **NAVw** file extension with Microsoft Word.

If the user is using Microsoft Windows Vista or Microsoft Windows Server 2008, then the file association can be made by going to the Start button and selecting the Control Panel. Once the Control Panel is open, select the Default Programs program. Once you have opened the program, select the “Associate a File type or protocol with a program” option to set the file association to Microsoft Word.

Word-Like Date Formatting

New to version 2 of the Style Sheet Tool is the ability to format dates generated from Microsoft Dynamics NAV 2009 more like the way Microsoft Word does. This applies to both the Classic Client as well as the Role Tailored Client. The following is a list of formats that are defined in the Style Sheet Tool.

- **Month D YYYY** - this option will tell Microsoft Dynamics NAV to format the date with a format string of '**<Month Text> <Day>, <Year4>**'. This will option will cause a date like 1/1/2009 to be formatted as January 1, 2009.
- **D Month YYYY** - this option will tell Microsoft Dynamics NAV to format the date with a format string of '**<Day> <Month Text> <Year4>**'. This will option will cause a date like 1/1/2009 to be formatted as 1 January 2009.
- **Month3 D YYYY** – this option will tell Microsoft Dynamics NAV to format the date with a format string of '**<Month Text,3>. <Day>, <Year4>**'. This will option will cause a date like 1/1/2009 to be formatted as Jan. 1, 2009.
- **D Month3 YYYY** – this option will tell Microsoft Dynamics NAV to format the date with a format string of '**<Day> <Month Text,3> <Year4>**'. This will option will cause a date like 1/1/2009 to be formatted as 1 Jan 2009.
- **Default** – this option will use the default date format associated with local region.

The selection of the Date Formatting can be found on the Style Sheet Fields Used List. The Date Format (Fig. 6) field has been added to this form to allow the user to select the type of Date formatting they would like per field.

Field No.	Field Name	Include Caption	Currency	Date Format
2	Sell-to Customer No.	✓		Default
19	Order Date	✓		Default
60	Amount	✓		Default
79	Sell-to Customer Name	✓		Default
81	Sell-to Address	✓		Default
83	Sell-to City	✓		Default
88	Sell-to Post Code	✓		Default
90	Sell-to Country/Region Code	✓		Default

Fig. 7 – Style Sheet Fields Used List showing the Date Format Field.

Default setting for Include Captions

Another new feature of the Style Sheet Tool is the ability to default the value of the Include Caption field when you add a field. This default is setup in the Style Sheet Tool setup form (Fig. 8).

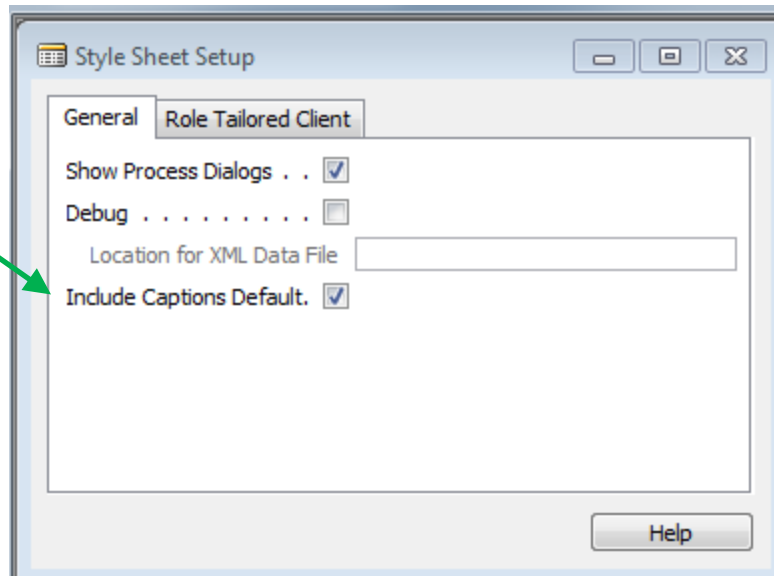


Fig. 8 – Style Sheet Setup form.

By un-checking this field, the user then has to select the **Include Caption** (Fig. 7) for each field that is included in the Style Sheet if they want it to be available in the Mail Merge document. This default is what every user will default to.

Mail Merge Document Properties

New to this version is the ability to update the document properties in Microsoft Word while creating the Mail Merge document and having these property values included in Style Sheet after the conversion is done. So, now, you can add information like who the Author of a particular document was and it will follow into the Style Sheet.

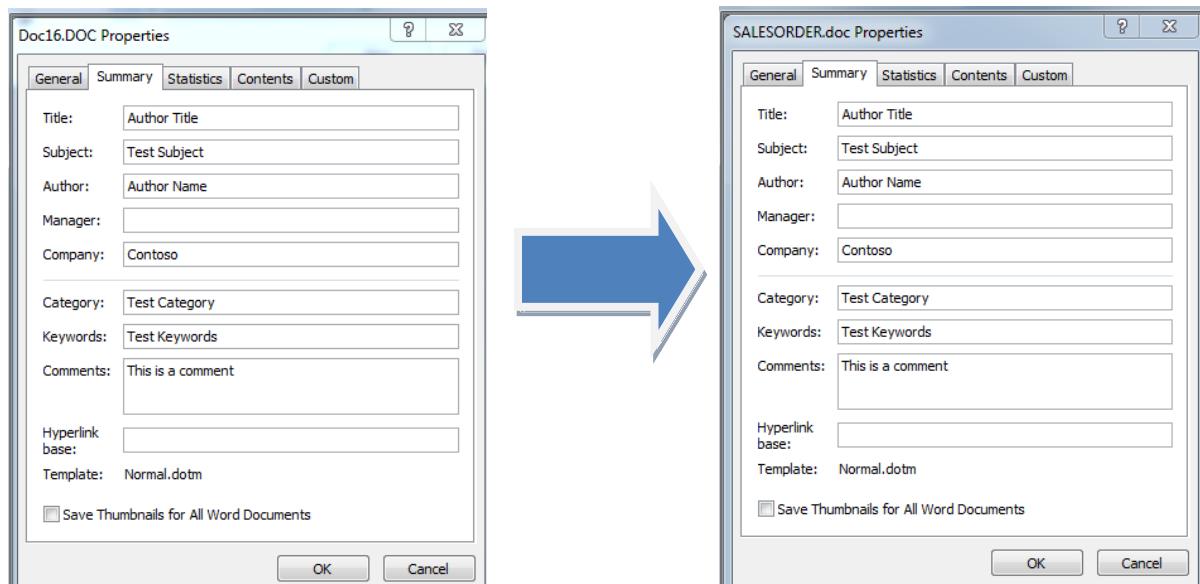


Fig. 9 – Mail Merge and Style Sheet document property windows.

Style Sheet Tool Objects

With this version, the Table objects for the Style Sheet Tool now have the property DataPerCompany set to No. This means, that the same Style Sheet can be used across multiple companies. In addition to that, there have been changes throughout the Style Sheet Tool to be more consistent when looking up tables. Now the lookups will look at the Table objects instead of looking to see if there is any TableData for a particular Table.

Miscellaneous Code Changes

Finally, there were miscellaneous code changes throughout the tool to correct reported issues from the previous versions.

Compatibility with NAV 5.0 SP1

This version of the Style Sheet Tool is compatible with Microsoft Dynamics NAV 5.0 SP1, but you must do a little work. The necessary steps are listed below.

1. Load the Style Sheet Tool 2.0.fob into a Microsoft Dynamics NAV 5.0 SP1 classic client. You need to have the latest build (29125). You can get this build by requesting [**KB 971170**](#).
2. Once the objects are loaded. Compile all the Style Sheet Tool objects. You will notice that several of the objects will not compile.
3. Apply "Change Log for NAV 2009 to NAV 5.0 SP1.txt" to back port the NAV 2009 code to work with NAV 5.0 SP1. This basically involves commenting out the NAV 2009 specific code regarding the manipulation of BLOB fields.