

iFacto ReVision: Frequently Asked Questions

Datum	09/12/2015
Document Titel	FAQ
Version	2016
Product	iFacto ReVision

Contents

General.....	3
Can I open a Classic Client from ReVision?	3
Can I open a RTC Client from ReVision?	3
Is there a smart way to set up all developers and consultants in a company to work with iFacto ReVision?.....	3
Source Control	3
What about Security?	3
Do I need to import objects in all the databases that I want to log?	3
Does anything change regarding “development experience”	4
If I didn’t change the object, will it create a new version?	4
Can I have more than one Repository?.....	4
When I create a project in TFS, I don’t see it in Visual Studio	4
Can I open more than one NAV session.....	5
Do I still have to set the Object Cache to 0 when I work with more than one developer on the same database at the same time?.....	5
What do you recommend as a query tool for my Team Foundation Server?	5
Other	5
Does it matter how I connect my Dynamics NAV Client to the database?.....	5
Does it matter how long my servername is?	7
Are there any known issues or compatibility errors?	7

General

Can I open a Classic Client from ReVision?

Yes you can! And iFacto ReVision is going to “learn” the settings on its own. Once you successfully connected a client to a database which is monitored by ReVision, it’s stored and you’ll be able to open that client to connect to that database by double clicking the connection in the repository at ReVision.

An extra option is that you Scan for clients as well. That way, you add all clients yourself, and in one go, ReVision is aware of all your different versions and builds on your local system.

Can I open a RTC Client from ReVision?

Yes, indeed. And this is a major advantage to avoid problems with build numbers: very classic client, RTC and server should all have the same build for optimal stability.

Is there a smart way to set up all developers and consultants in a company to work with iFacto ReVision?

There certainly is.

You can export the repository settings and send them to all users. Only thing they have to do is import the .rep file(s) and they’re ready to go. You, as an admin, are certain this way that everything is set up correctly.

Source Control

What about Security?

iFacto ReVision uses windows integrated security. So you can use the default SQL Server security or Windows Security to prevent users from doing things they are not permitted too, like:

- Enable/disable SQL Locking
- Adding Repositories
- ...

Why can’t I check in?

I might happen that you try to check in, that it just doesn’t happen .. this is probably due because of your license: If you’re not allowed to export as Text, then you won’t be able to check in.

Do I need to import objects in all the databases that I want to log?

No! iFacto ReVision does not require objects to be imported in any database before Source logging can be used. Just a very simple iFacto ReVision Client install and connection to (one or more) repository.

This has a big advantage in upgrading and things like that. If a new version of iFacto ReVision comes, you don't need to upgrade anything in the customer databases.

Also, when installed, all your database that you want to log, can be added to the repository by a few simple clicks.

Does anything change regarding “development experience”

No!

Developers can work the way they are used to. Nothing changes at all. iFacto ReVision will work in the background, monitoring what developers are doing, and logging its changes.

There are extra possibilities though .. like external editing and compare/compile. We like to call it “enhanced development experience” .

If I didn't change the object, will it create a new version?

No.

There will only be a new version in the repository when the object actually changed. One remark though: an object is also changed when you change the date or modified flag.

Can I have more than one Repository?

Yes you can. You can have as many as you like!

In fact, one of the recommendable approaches could be that you have a local repository (Visual SourceSafe is quite easy to have on your local machine) and one on your network (e.g. Team Foundation Server). This way, you could have your databases at your customers (where you're not able to connect to your TFS) on your local repository, and your DEV databases on your TFS.. .

When I create a project in TFS, I don't see it in Visual Studio

Probably you created your project from within iFacto ReVision. This way, a lot of other Team-stuff in TFS is not created.

If you do want this, you should not create your project from within iFacto ReVision, but from Visual Studio, where you have to connect to your TFS, and create a “Team Project”. When you use the same name in iFacto ReVision, it will connect to your Team Project and have the Team functionality you want in TFS.

In a later version, iFacto ReVision will add support for work items and such.. .

Can I open more than one NAV session

You can open as many NAV sessions as you want, if you take these limitation into account: It is NOT possible to connect to the same database.

Do I still have to set the Object Cache to 0 when I work with more than one developer on the same database at the same time?

Yes.

What do you recommend as a query tool for my Team Foundation Server?

We use and recommend the free version of "Team Foundation Sidekicks", because:

- It gives you all information about who did what, when and why.
- It's very user-friendly
- It's free

You can download it here: <http://www.attrice.info/cm/tfs/>

Is it possible to compare all my developments with the last checked in version?

Yes, very easy. On the Pending Objects window, you have a button which is going to do that exact thing: you can compare one, multiple or all checked out objects with the version of itself that was last checked in.

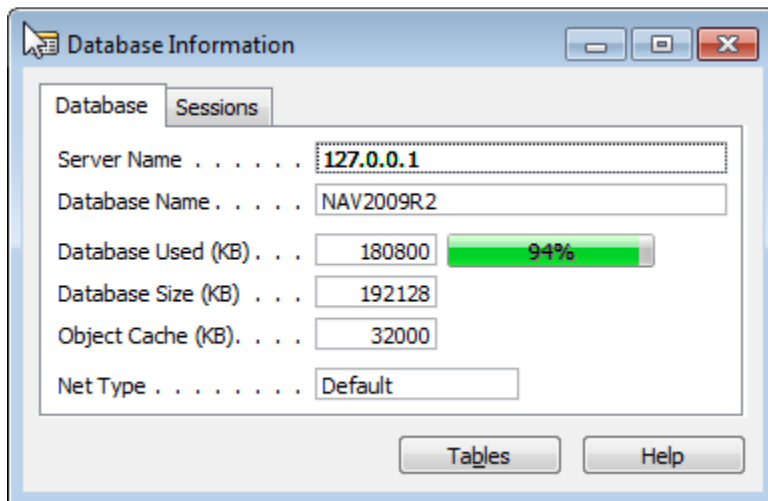
Where is the automatic checkin/checkout?

Gone! In a way, they were useless. Checking out objects when you want to debug or just reading objects doesn't make sense. Same for checking in: it's going to create a lot of versions .. which doesn't make sense either.

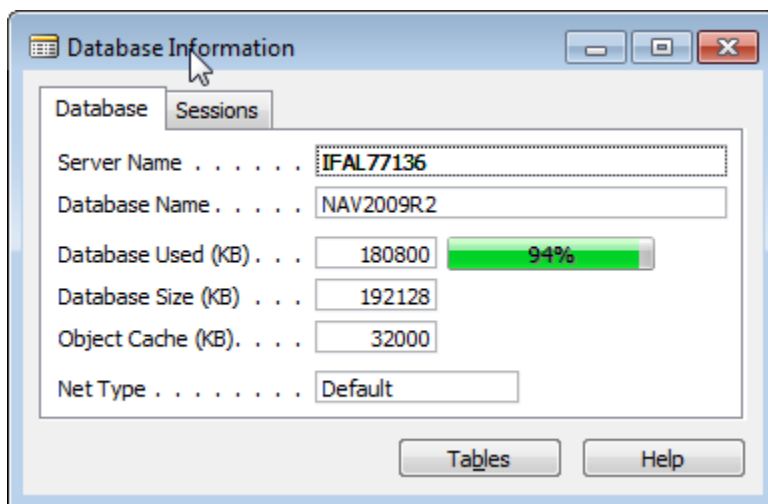
Other

Does it matter how I connect my Dynamics NAV Client to the database?

Yes it does. For example, these connections are different connections:



Is not the same as



Although it's the same computer, same database, same client, same everything. The difference is the way I connected: through IP address, or server name.

We advise always using DNS names, as this is far more readable.

We also advise that when a connection was set up in the repository, to always open the client from within ReVision. That way, you're sure that you use the right build, and the right connection details to the database.

Does it matter how long my servername is?

Yes. Apparently, the NAV clients could have problems with server names with more than 15 characters. If the client has problems with it, iFacto ReVision will have problems with it. So please limit the (SQ) Server names to 15 characters.

Are there any known issues or compatibility errors?

At this moment, there are a few things to keep in mind:

- If you're working with Visual SourceSafe, only version 2005 will work.
- When working with Team Foundation Server, there can be a serious performance loss when Antivirus is installed. We recommend excluding your revision working folder from the antivirus.