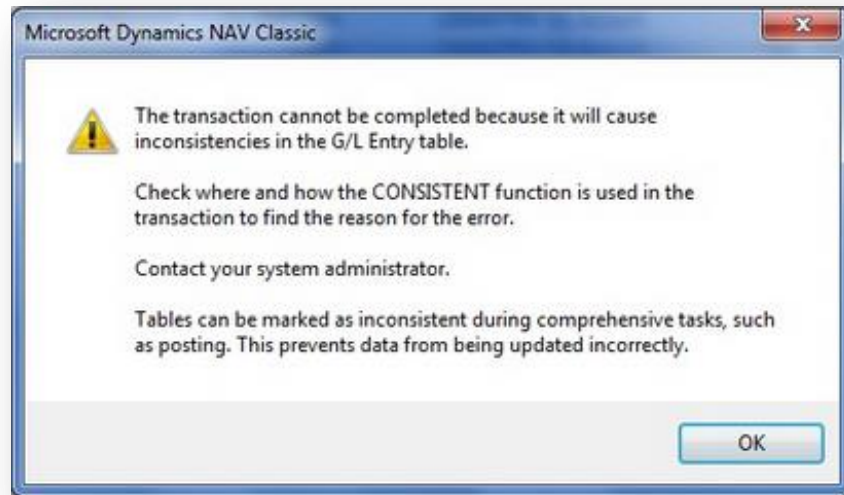


Inconsistences Detector for Microsoft Dynamics NAV

Binomica

Symptoms

Sometimes, when accounting entries are made, Microsoft Dynamics NAV can present the following error message:



This rare error occurs upon detection of a mismatch between the debits and credits in the seats that you want to register, usually through year end processes or accounting for a significant number of movements and above, however, due to differences in results of rounding values with multiple currencies.

When this error occurs is very complex trace the origin of it and that is why it becomes necessary a tool that we deploy the movements involved in the registry to facilitate detection of mismatches.

For these situations, Binomica facilitates the tool **Inconsistencies Detector for Microsoft Dynamics NAV**; functionality that assists the business in these circumstances.

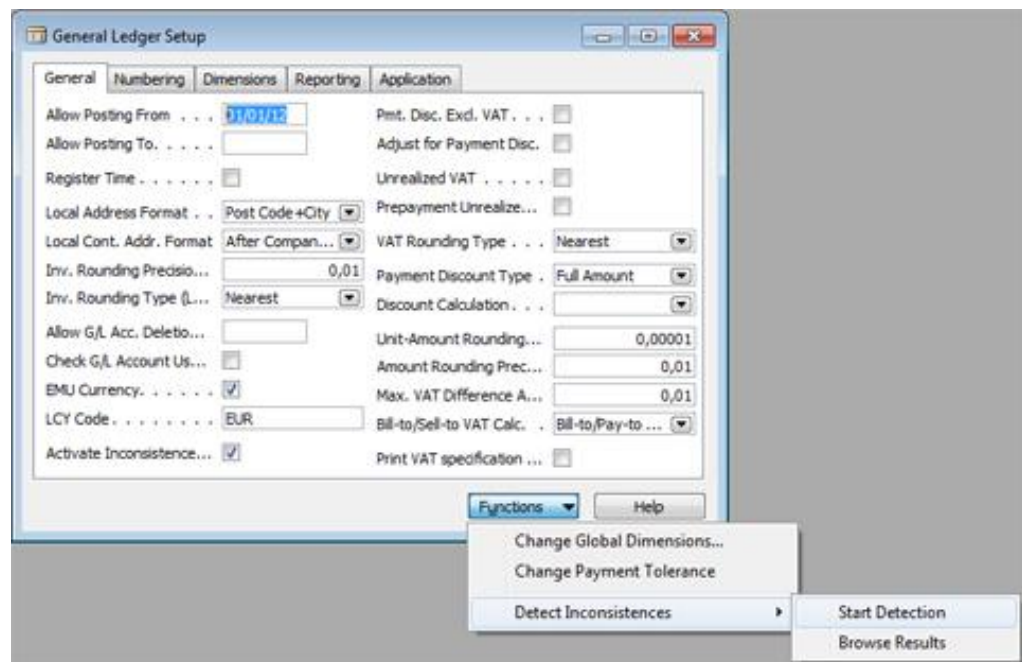
Functional Reference

The procedure for the detection of inconsistencies is simple. Once implanted objects, follow these steps:

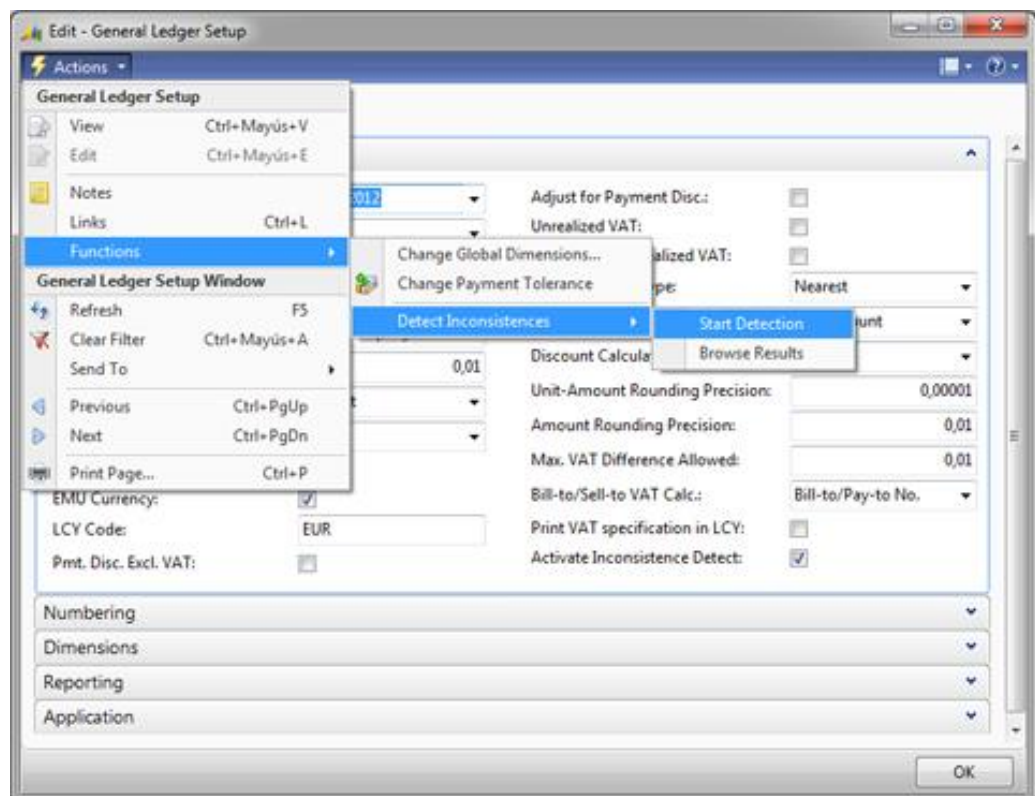
- Go to the General Ledger Setup card and check the "Activate Detect Inconsistencies"
- Select the option "Functions" / "Detect Inconsistencies" / "Start Detection"
- Run the processes that produce the consistent error.
- Once the error appear, focus again the General Ledger Setup card and select the option "Functions" / "Detect Inconsistencies" / "Browse Results"

Finally, a table will be browsed with the list of all the movements involved in the transaction that are causing the accounting mismatch.

Microsoft Dynamics NAV 2009 R2 (Classic)



Microsoft Dynamics NAV 2009 R2 (RTC)



Edit - General Ledger Setup

HOME ACTIONS

Change Global Dimensions... Change Payment Tolerance Functions

Start Detection Detect Inconsistencies Browse Results

General Ledger Setup **Start Detection**

General

Allow Posting From:		LCY Code:	GBP
Allow Posting To:		Pmt. Disc. Exd. VAT:	<input type="checkbox"/>
Register Time:	<input type="checkbox"/>	Adjust for Payment Disc.:	<input type="checkbox"/>
Local Address Format:	Post Code+City	Unrealized VAT:	<input type="checkbox"/>
Local Cont. Addr. Format:	After Company Name	Prepayment Unrealized VAT:	<input type="checkbox"/>
Inv. Rounding Precision (LCY):	0,01	Max. VAT Difference Allowed:	0,00
Inv. Rounding Type (LCY):	Nearest	VAT Rounding Type:	Nearest
Allow G/L Acc. Deletion Before:		Bill-to/Sell-to VAT Calc.:	Bill-to/Pay-to No.
Check G/L Account Usage:	<input type="checkbox"/>	Print VAT specification in LCY:	<input type="checkbox"/>
EMU Currency:	<input type="checkbox"/>	Use Legacy G/L Entry Locking:	<input type="checkbox"/>
		Activate Inconsistence Detect:	<input checked="" type="checkbox"/>

Numbering

Dimensions

Reporting

Application

OK