

2008

Full Text Search

For Microsoft Dynamics NAV 5.0

User Manual

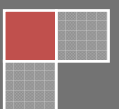
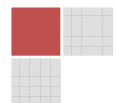
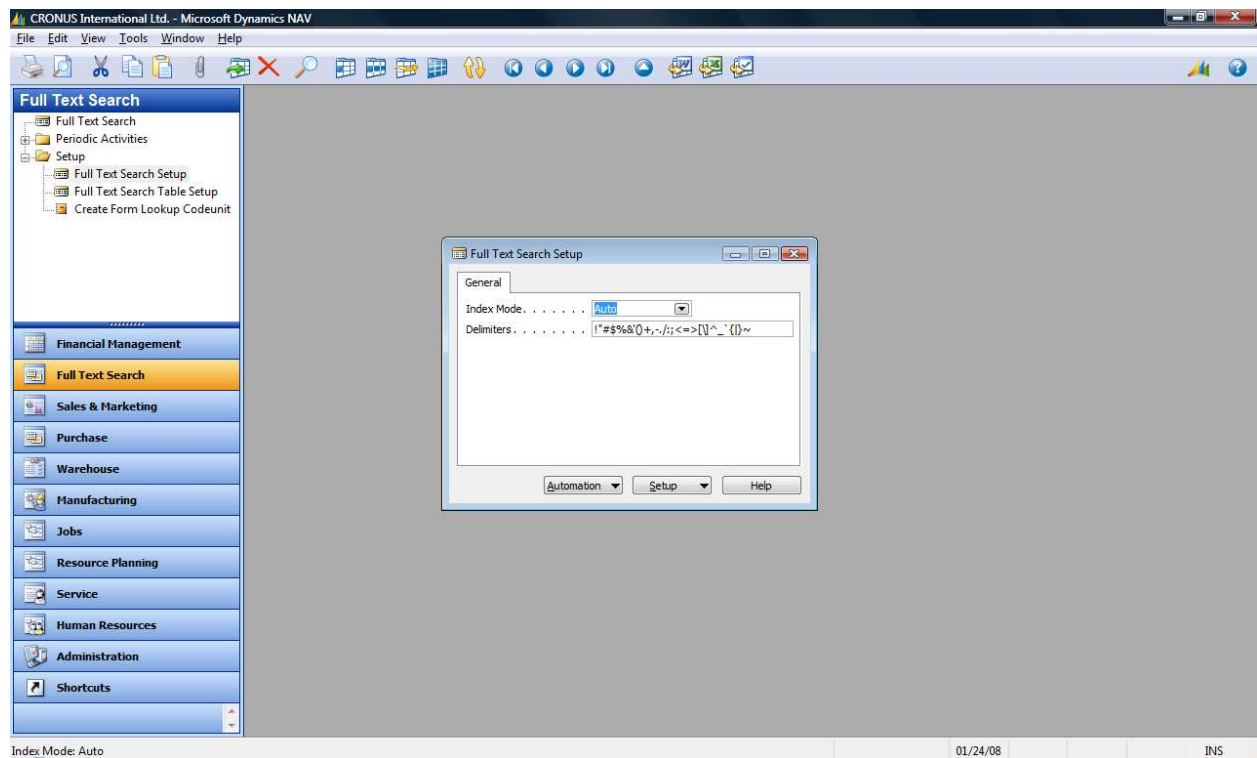


Table of Contents

Full Text Search Setup.....	3
Index Mode	3
Delimiters.....	3
Setup Button	4
Automation Button	4
Full Text Search Table Setup	5
Key.....	5
Table No.	5
Lookup Form No.....	5
Group Result by Fields	5
Field No.	5
Use as Result Field	6
Periodic Activities.....	7
Full Text Search Index – All	7
Full Text Search Index – Individual.....	7
Full Text Search	8
Find What.....	9
Search Tables	10
Exact Match	10
Use Grouping	10



Full Text Search Setup



Index Mode

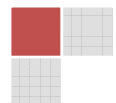
You have the option to Manual index or Auto index.

Manual index requires that you periodically run the indexing function located under Periodic Activities

Auto index will index data as it is entered by users. This requires the correct permissions for the users, see the permissions section.

Delimiters

This contains the delimiters used during indexing of data. If you want to change the delimiters, you have to re-index everything. The delimiters can also be changed from the Full Text Search Delimiters window.



Setup Button

The setup button contains a function to insert standard roles and permissions. Two roles are created, FTS-ALL and FTS-SUPER. FTS-ALL should be added to all users. (The function will ask you if you want to do this as well)

Automation Button

The automation button contains functions to handle the Automation Control that is used to index external files like PDF's, Word and others, depending on the programs installed. The automation uses the standard IFilter interface to parse the files, this interface gets installed by the product themselves so it's important to have these programs installed if you want to have the indexing functioning correctly.

Download Document Index

This will launch a url to the site where you can download a zip file containing the files needed. The file is only a few KB. These files need to be extracted to the local Dynamics NAV application directory. There should be 3 files in the zip file:

NAVDocumentSearch.dll

NAVFullTextSearch.dll

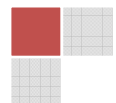
NAVFullTextSearch.tlb

Register Document Index

This will register the NAVFullTextSearch.dll file. You have to have the .Net framework 2.0 installed to be able to do this. This is usually installed by the Microsoft Dynamics 5.0 Client.

Unregister Document Index

This will unregister the NAVFullTextSearch.dll.



Full Text Search Table Setup

CRONUS International Ltd. - Microsoft Dynamics NAV - [1 - Full Text Search Table Setup]

File Edit View Tools Window Help

Full Text Search

- Full Text Search
- Periodic Activities
- Setup
 - Full Text Search Setup
 - Full Text Search Delimiters
 - Full Text Search Table Setup
 - Create Form Lookup Codeunit

Financial Management

Full Text Search

Sales & Marketing

Purchase

Warehouse

Manufacturing

Jobs

Resource Planning

Service

Human Resources

Administration

Shortcuts

General

Key 1

Table No. 18

Table Name Customer

Lookup Form No. 21

Group Result By Fields No.

Field No.	Field Caption	Use As Re...
1	No.	
2	Name	✓
8	Contact	
9	Phone No.	

Table Help

Key: 1 01/24/08

You can setup any table and any field to index.

Key

This field contains the key of the Table Setup and is used internally by the system.

Table No.

This is the table number of the table you want to pick fields to index. Note: If you choose to index the Record Link table, you do not set a Lookup Form No., this is already handled for you.

Lookup Form No.

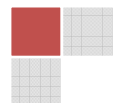
This is the number of the form you want to use as the lookup form for this table setup. After you are done setting up your tables, you need to run the function Create Form Lookup Codeunit. This will create the codeunit that handles the lookup forms.

Group Result by Fields

This is used to define the Grouping of the result.

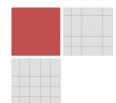
Field No.

The field number you want to index.



Use as Result Field

This indicates the field to use as the Result Field when returning a result set.



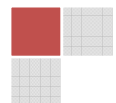
Periodic Activities

Full Text Search Index – All

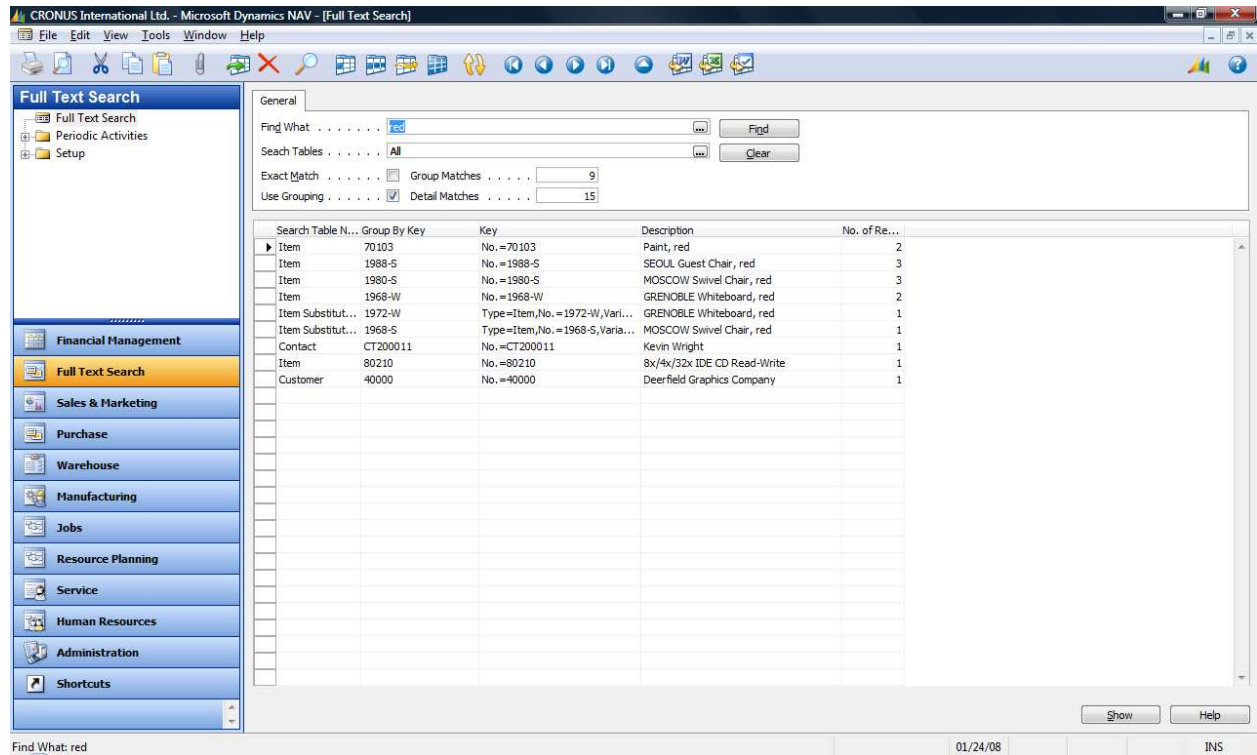
Use this function to index all tables which you have set to index.

Full Text Search Index – Individual

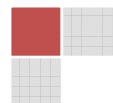
Use this function to index a specific or range of tables.



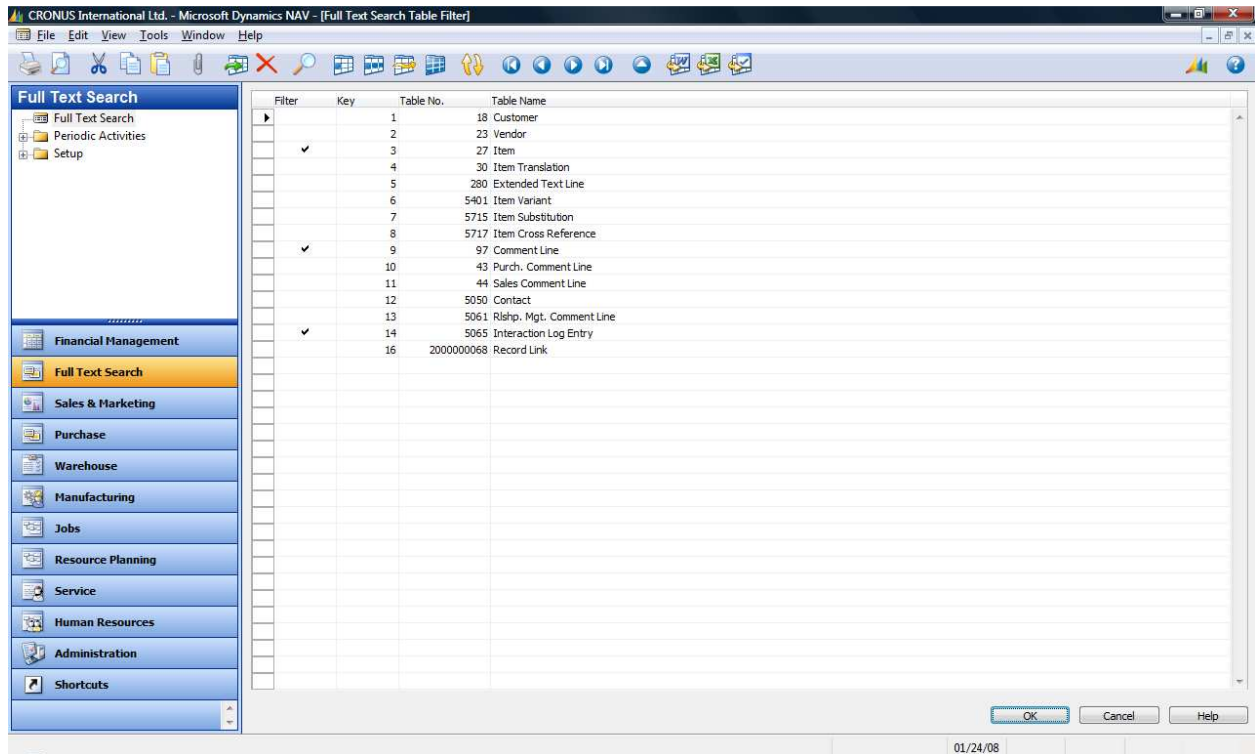
Full Text Search



The query window will return any of the matched results. You can click the show button on the result you are interested in to launch the lookup form.



Search Tables



Use this feature to narrow your search to a specific table or range of tables.

Exact Match

Check this if you want an exact match without using the phonetically similar words.

Use Grouping

Un-check this if you do not want to group your results.

