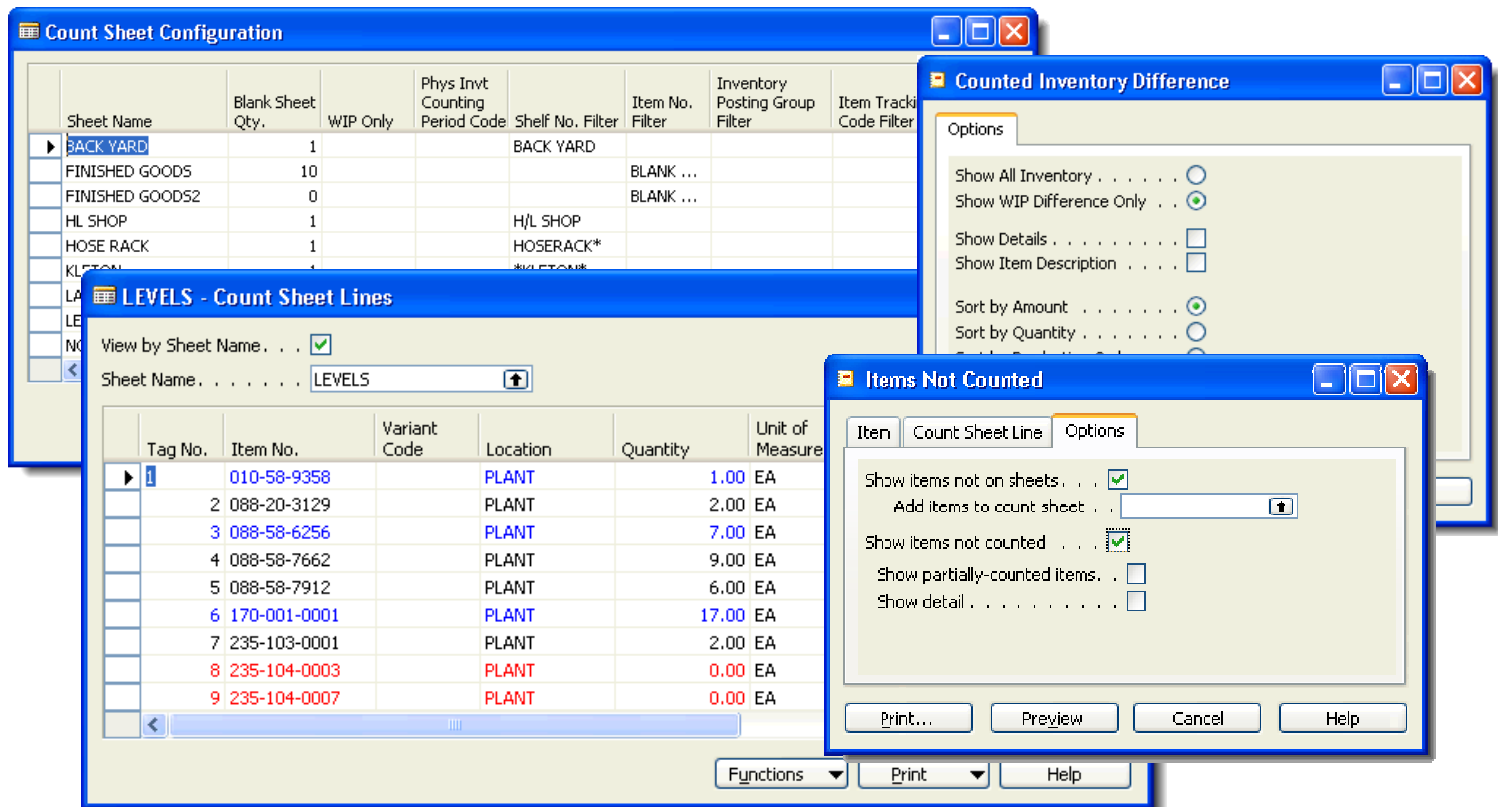


# Physical Inventory Module



**Why make your physical inventory counts any harder than they already are?** The DMS Physical Inventory Module lets you easily manage complete, partial, and WIP counts.

**Experience quicker data entry, easier reconciliation, and simplified posting.** The Physical Inventory Module enhances the base NAV physical inventory capabilities to allow for comprehensive count sheet creation, advanced reconciliation analysis, multi-user count data entry, and simplified journal posting.

**Ensure all inventory is accurately accounted for** by incorporating WIP inventory into the count. The module automatically identifies and manages WIP, reconciles it with other counted inventory, and posts the appropriate consumption and inventory adjustment entries.

**The Physical Inventory Count Module** is ideal for organizations that have a large number of inventory items, count inventory multiple times per year, have a high level of WIP, or have high inventory turnover.

# Module Capabilities

## **Flexible Count Sheet Generation**

Create count sheets that represent how you want to count inventory, such as sheets for specific count teams, locations, product types, etc. Easily define sheets for cycle counting or partial warehouse counts.

## **Multi-user Count Entry**

Speed up data entry by allowing multiple users to enter count data simultaneously. The count entry screen provides visual indicators of incorrect counts or data entry. Easily add additional items that were not on the original count sheets.

## **Integration with Inventory Barcodes**

The Count Module is integrated with the DMS Warehouse Mobile Data Module, and also provides a simple interface for integration with any other external data collection system. Leverage your investment in your hand-held data collection system for inventory counts.

## **Simplified WIP Counting**

Accurately capture consumed and unconsumed WIP - the count module automatically reconciles WIP with inventory and production order consumption.

## **Powerful Reconciliation Reporting**

Speed up inventory difference reconciliation and accuracy with powerful reporting that evaluates differences by amount or quantity, and provides full count details to quickly locate count errors.

## **Enhanced Journal Test Report**

Ensure journal entries will post the first time by using the much more comprehensive Count Module Journal Test Report. The report evaluates all data that may prevent posting, including item tracking, and can provide a list of only lines that will not post. The Enhanced Test Report works with all item journals.

## **Enhanced Inventory Turns Analysis**

Easily identify obsolete inventory, items with improper planning parameters, and the financial impact of those issues. Automatically calculate and set inventory count periods based on inventory turns to simplify cycle count definition and management.

## **Benefits**

- Helps ensure fast and accurate inventory counts
- Streamlines and speeds up inventory counts
- Simplifies inventory count reconciliation and posting
- Fully incorporates and reconciles WIP counts with the standard inventory count
- Provides consistent interface for non-warehouse and warehouse counts