

Navutilus Object Squeeze

User Guide

Introduction

Typical applications

The Object Squeeze utility is designed to provide you with the abilities:

- to remove the source code from executable MS Dynamics NAV object(s) while keeping them fully functional (or you can choose to replace their source code with any text you like);
- to replace the Documentation trigger of executable MS Dynamics NAV object(s) with any text you like (or delete its content at all);
- to erase all the local variable names in the functions and triggers of executable MS Dynamics NAV object(s).

You can go with any combination of these you like.

The executable MS Dynamics NAV objects the utility works with are Tables, Forms, Reports, Dataports, XMLports, Codeunits.

Removing the function source code and/or Documentation trigger content decreases the executable object size and hastens its initial loading when it's run.

NOTE: The utility won't process the object without the license permissions to read and modify.

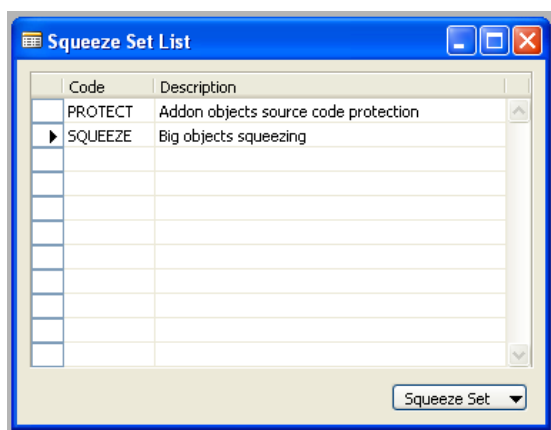
Objects definition

Basics

It is presumed to start your work with Object Squeeze utility from either **Squeeze Set List** or **Squeeze Set Card** form. Both forms designed to create and edit a Squeeze Set. Every Squeeze Set is in fact the settings of the Object Squeeze utility behavior towards the objects you've put into this set. You can process one Squeeze Set at single operation of the Object Squeeze utility.

Squeeze Set List

This table form shows the list of Squeeze Sets that exists in your system at the moment.



Form functionalities:

- Using menuitem *Squeeze Set*→*Card* (keyboard shortcut Shift+F5) you can access the **Squeeze Set Card** form.
- You can create new Squeeze Set and rename or delete existing one by usual MS Dynamics NAV means to create, rename or delete table records.

If you've created the Squeeze Set in this form then it is presumed that you'll manage this set in further details via **Squeeze Set Card** form.

Squeeze Set Card

PLEASE DO NOT FORGET TO BACKUP YOUR OBJECTS BEFORE PROCESSING THEM.

This card form is mainly designed to show and manage the Squeeze Set in detail (the current Squeeze Set). Every Squeeze Set is the named list of the MS Dynamics NAV executable objects each one provided with the settings directing the utility what to do when processing, i.e. processing settings (described later). One Squeeze Set can be processed at single operation of the Object Squeeze utility, i.e. processing operation. When you start the processing operation you do it here.

Object Type	ObjectNo	Object Name	Replace Source	Source Replacer Text	Replace Documen...	Documentation Replacer Text	Erase Local Variable ...
Table	77100	Navutilus Search&Replace Lite	✓	*	✓	*	✓
Form	77100	Navutilus Search&Replace Lite	✓	*	✓	*	✓

Form functionalities:

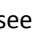
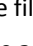


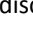

Generic:

- Using menuitem *Squeeze Set*→*List* (keyboard shortcut F5) you can access the **Squeeze Set List** form in lookup mode (useful to find the Squeeze Set you need).
- You can create new Squeeze Set and rename or delete existing one by usual MS Dynamics NAV means to create, rename or delete table records when the input focus is in the card form.
- The subform shows executable object list and the processing settings of each object. You can create new line of the list and rename or delete existing one by usual MS Dynamics NAV means to create, rename or delete table records when the input focus is in the subform.

"General" tab:

- *Code* field is the unique code of Squeeze Set (the primary key).
- *Description* field holds your description of the Squeeze Set.

“Templates” tab:

- Field *Documentation Trigger Overwrite Template* provides you with the functions to load/unload the text file in order to use it as the template when replacing the Documentation trigger of the executable objects processed. The field is used together with the menuitem *Functions→ Fill Objects Documentation Replacer with Template* (described later). To manipulate this text file set the input focus to this field and you’ll see the lookup , drill-down , and assist  buttons. Push the lookup button  to load the file, push the drill-down  to save previously loaded text file (if any) to your disc or push the assist button  to delete the file from current Squeeze Set.
- Field *Source Code Overwrite Template* provides you with the functions to load/unload the text file in order to use it as the template when replacing the source code of the executable objects processed. The field is used together with the menuitem *Functions→ Fill Objects Source Replacer with Template* (described later). Manipulate this text same way as for field *Documentation Trigger Overwrite Template* (described above).

“Functions” menu:

- Menuitem *Functions→Fill Objects Documentation Replacer with Template* populates the field *Documentation Replacer Text* (described later) in all objects of current Squeeze Set with the content of the field *Documentation Trigger Overwrite Template* (described above).
- Menuitem *Functions→Fill Objects Source Replacer with Template* populates the field *Source Replacer Text* (described later) in all objects of current Squeeze Set with the content of the field *Source Code Overwrite Template* (described above).
- Menuitem *Functions→ Squeeze Objects!* starts processing operation with current Squeeze Set (**Warning:** please do not forget to backup your objects before processing them).

Object list subform:

	Object Type	ObjectNo	Object Name	Replace Source	Source Replacer Text	Replace Documen...	Documentation Replacer Text	Erase Local Variable ...	
▶	Table	77100	Navutilus Search&Replace Lite	✓	*	✓	*	✓	▲
	Form	77100	Navutilus Search&Replace Lite	✓	*	✓	*	✓	
									▼

- Fields *Object Type*, *ObjectNo* contain the object type and number accordingly, both indicating the executable object to process.
- The field *LineNo* (invisible by default) enumerates the objects in Squeeze Set object list.
- Field *Object Name* shows the name of this object.
- The CheckBox *Replace Source* controls if the source code of the executable object’s functions and triggers is to substitute by the content of the text file loaded to the field *Source Replacer Text* (**Warning:** if there’s nothing loaded to then the source code of the executable object will be wiped out, and further attempts to compile such object in the Object Designer will cripple its functionality). Text file loading procedure is same as one for *Documentation Trigger Overwrite Template* above.

- The CheckBox *Documentation Replacer Text* controls if the Documentation trigger's content of the executable object is to substitute by the content of the text file loaded to the field *Documentation Replacer Text*. Text file loading procedure is same as one for field *Documentation Trigger Overwrite Template* above.
- The CheckBox *Erase Local Variable Names* controls if the local variable names of the functions and triggers are to erase in the executable object (useful if you'd like to hide your mnemonics of variables).

When you've setup the Squeeze Set (make sure you've made the backup of the objects to process in current Squeeze Set) you can proceed to squeezing. Press the menuitem *Functions→ Squeeze Objects!* and you'll receive the warning notifying you that permanent changes to your objects are about to be made. If you don't mind then confirm it and the processing of the current Squeeze Set starts.

Support

www.navutilus.com

support@navutilus.com

