

DATA WAREHOUSE BUSINESS INTELLIGENCE FOR MICROSOFT DYNAMICS NAV

- » True Data Warehouse built for content and performance.
- » 100% Microsoft Stack. 100% customizable SQL code.
- » Many languages. One installation.
- » Many source versions. One Installation.

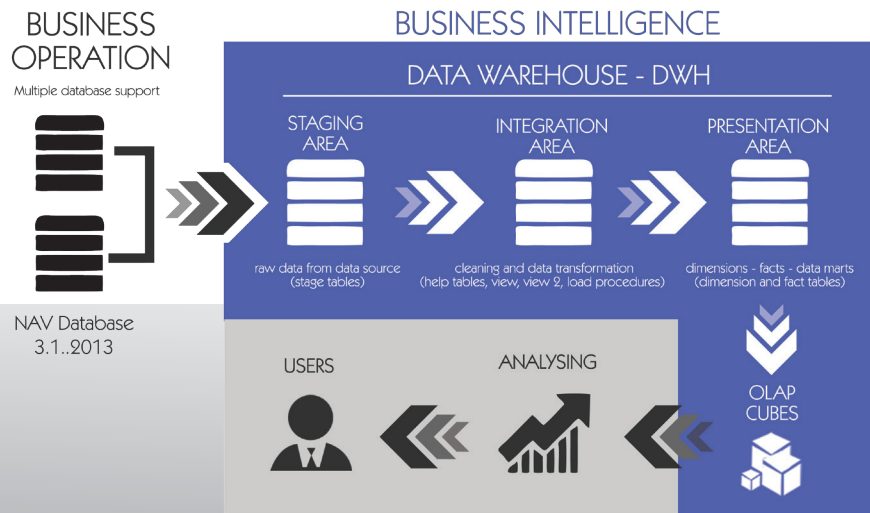
Receivables Balance	% of Total Balance	% Over
206.062	6,17%	72%
5.140	5,24%	98%
8	4,84%	47%
	4,39%	44%
	94%	50%
		77%
		70%
	56%	93.003
	52%	158.524
		404.466
		263.595
		224.703
		247.358
		2.348
		71.066
		64.743
		64.641
		64.300
		60.677
		60.096
		59.806
		59.108
		215.182
		209.037
		386.617
	57%	7.331.199

57%

7.331.199

22

» TECHNOLOGY



» CUSTOMIZATIONS



» DATA WAREHOUSE

BI4Dynamics provides an out-of-the-box data warehouse designed using the Kimball methodology. This best in class data warehouse is built on the industry standard SQL database platform, with the added benefit of SQL Server Analysis Services (SSAS) and provides numerous built-in measures and dimensions based on many years of experience in implementations of Microsoft Dynamics NAV.

A Data Warehouse is the heart of the BI solution because it enables:

- Multi-database merging
- Faster reporting
- More effective calculations
- Snapshots of daily states

» APPLICATION AREAS

As end process of building Business Intelligence BI4Dynamics creates OLAP Cubes. 1 OLAP Cube covers 1 Application area inside Microsoft Dynamics NAV. BI4Dynamics NAV features 12 OLAP Cubes which covers all Microsoft Dynamics areas.

Standard Areas

- General Ledger
- Receivables
- Sales
- Payables
- Purchase
- Inventory

Additional Areas

- Sales Orders
- Purchase Orders
- Account Schedules
- Jobs and Resources
- Manufacturing
- Service Management
- Fixed Assets
- Bank Account

» BENEFITS

For Business Users

- Rich content across all Microsoft Dynamics NAV business application areas; at least 30% more content compared to the nearest competitor
- 100 highly structured, predefined Excel reports ready for immediate use
- Available in 21 languages
- Affordable pricing (per database, unlimited users) with low TCO
- 30 day free trial, fixed BI project price and risk free implementation

For IT Professionals

- Data warehouse based (Kimball star schema) architecture designed for
- performance, multiple-sources, daily snapshots and incremental load
- Uses existing Microsoft infrastructure (SQL database, Excel, Active Directory)
- User friendly Customization wizard
- 100% open SQL code for further development

» USAGE

BI4Dynamics slashes your report writing costs, reduces implementation time and provides you with real output from Microsoft Dynamics NAV to manage your business more efficiently.

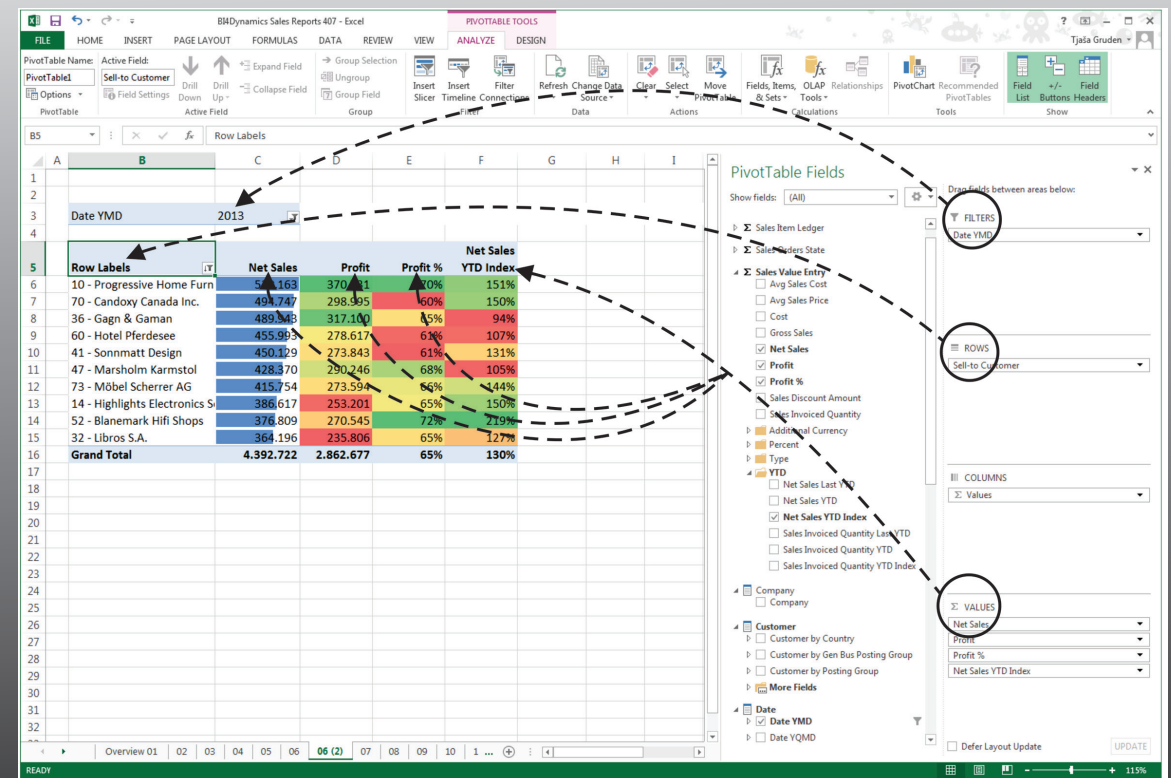
100+ Predefined Excel Reports

100 predefined reports, dashboards and business graphs are available out of the box to get you started. Every Standard BI4Dynamics application area comes with a set of predefined reports made in Microsoft Excel. Predefined reports are made on best practice approach and cover business needs at all company levels.

Every set of report starts with a strategic overview where users can monitor trends, then continue with more operational, hands-on reports which cover daily and weekly reporting of business users.

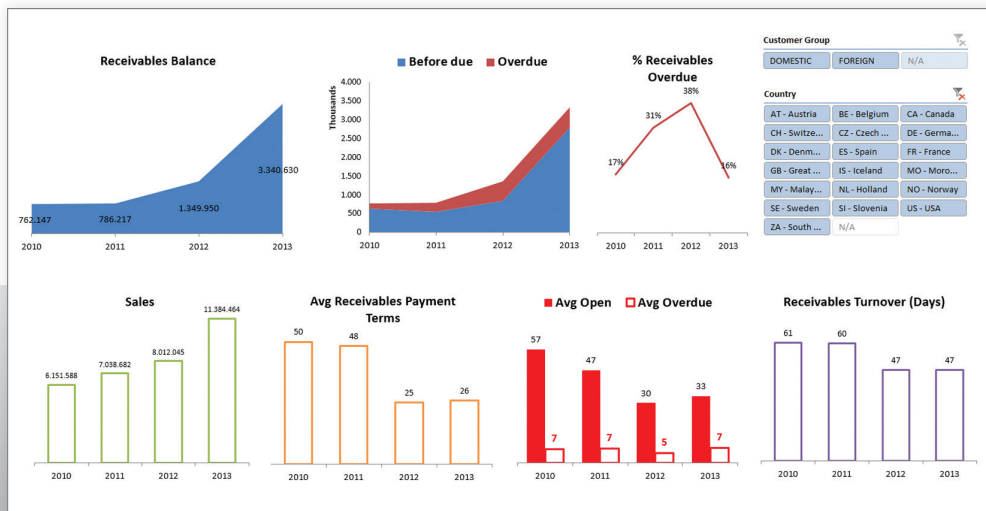
On the right you can see an Excel screenshot with a Pivot table field list that contains BI4Dynamics dimensions and measures. Attributes are automatically positioned in pivot table rows and columns by dragging and dropping the attribute into Column Labels, Row Labels and Values in Report Filters. For each dimension we can examine its hierarchy by clicking on +.

Working with Pivot tables



» RECEIVABLES

Do you want to know where your money is? Analyse your customers' payment habits like a hawk and improve your financial position. Receivables module is most commonly used as standard in all organisations and comes with more specific measures like **Average Balance, Sales on Credit and % of Total Balance**.



RECEIVABLES OVER YEARS

This overview shows most commonly used KPIs in receivables area, like Receivables Balance, Before Due and Overdue structure, Average Payment Terms, Late payments (Avg. Overdue) and Receivables Turnover in Days

Posting Group	Country									
DOMESTIC	AT - Austria	BE - Belgium	CA - Canada	CH - Switzer...	CZ - Czech R...	DE - Germany	DK - Denmark	2010	2011	2012
FOREIGN	ES - Spain	FR - France	GB - Great ...	IS - Iceland	MO - Moroc...	MY - Malay...	NL - Holland	2013	N/A	
N/A	NO - Norway	SE - Sweden	SI - Slovenia	US - USA	ZA - South ...	N/A				

Receivables Balance					Receivables Balance %				
	2010	2011	2012	2013	2010	2011	2012	2013	
⊖ Before due	631.993	544.483	839.602	2.801.289	82,9%	69,3%	62,2%	83,9%	
⊖ Before due 61 - 90 days	83.608	90.137	101.191	2.760.394	11,0%	11,5%	7,5%	82,6%	
⊖ Before due 31 - 60 days	112.039	41.234	43.477	35.889	14,7%	5,2%	3,2%	1,1%	
⊖ Before due under 30 days	436.345	413.112	694.935	5.005	57,3%	52,5%	51,5%	0,1%	
⊖ Overdue	130.154	241.734	510.348	539.341	17,1%	30,7%	37,8%	16,1%	
⊖ Overdue under 30 days	24.336	102.534	107.830	19.210	3,2%	13,0%	8,0%	0,6%	
⊖ Overdue 31 - 60 days	10.567	4.360		20.978	1,4%	0,6%	0,0%	0,6%	
⊖ Overdue 61 - 90 days	15.105		18.951	16.208	2,0%	0,0%	1,4%	0,5%	
⊖ Overdue 91 - 120 days	4.720		28.938	12.607	0,6%	0,0%	2,1%	0,4%	
⊖ Overdue 121 - 150 days	64.502	2.906	60.392		8,5%	0,4%	4,5%	0,0%	
⊖ Overdue 151 - 180 days		1.702	151.451	7.447	0,0%	0,2%	11,2%	0,2%	
⊖ Overdue 180 - 365 days	10.924	30.196	6.220	162.440	1,4%	3,8%	0,5%	4,9%	
⊖ Overdue 1 - 2 years		100.037	36.529	167.100	0,0%	12,7%	2,7%	5,0%	
⊖ Overdue 2 years			100.037	133.351	0,0%	0,0%	7,4%	4,0%	
Grand Total	762.147	786.217	1.349.950	3.340.630	100,0%	100,0%	100,0%	100,0%	

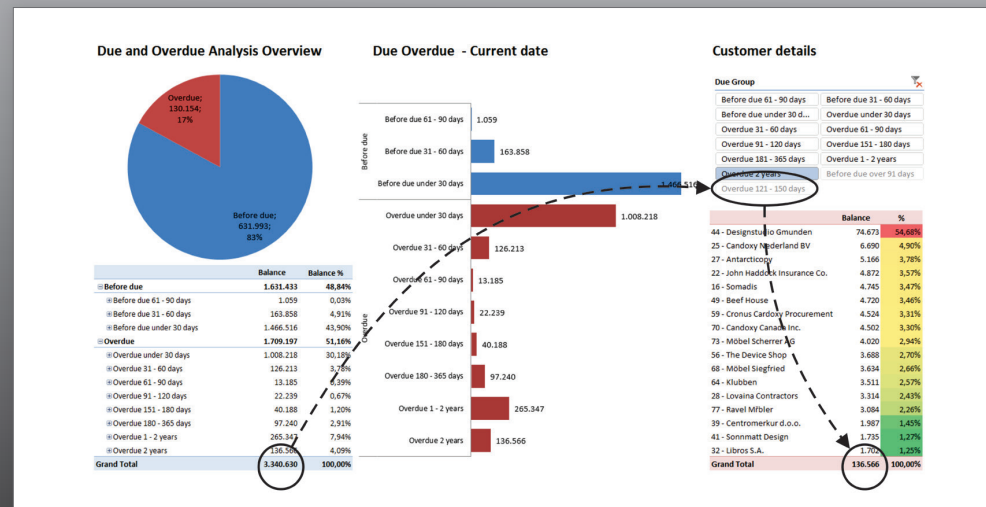
DUE ANALYSIS OVER YEARS

Receivables structure over years provides information for Before Due and Overdue receivables in absolute numbers and percentages with conditional formatting.

	Receivables	% of Total		% of Total	Sales On	Customer	Avg Payment	Avg Open	Avg Due	Turnover	
	Balance	Balance		% Overdue	Sales	Credit (%)	Net Change	Terms	Days	Days	Days
60 - Hotel Pferdesee	206.062	6,17%	72%	455.993	1,40%	100	72.608	35	55	14	103
44 - Designstudio Gmunden	175.140	5,24%	98%	259.161	0,80%	100	7.726	46	52	5	276
70 - Candoxy Canada Inc.	161.768	4,84%	47%	494.747	1,52%	101	143.325	31	40	2	39
56 - The Device Shop	146.504	4,39%	44%	330.973	1,02%	100	97.517	20	25	7	76
73 - Möbel Scherrer AG	131.505	3,94%	50%	415.754	1,28%	100	120.581	29	41	11	47
64 - Klubben	123.070	3,68%	77%	274.451	0,84%	100	-19.436	17	21	7	106
41 - Sonnmatt Design	113.317	3,39%	70%	450.129	1,38%	100	100.049	28	33	5	42
11 - The Cannon Group PLC	105.663	3,16%	56%	93.003	0,29%	100	105.663	31	91	16	118
30 - Karoo Supermarkets	103.571	3,10%	52%	158.524	0,49%	100	59.789	21	24	10	39
52 - Blanemark Hifi Shops	99.182	2,97%	34%	404.466	1,24%	100	75.086	36	43	6	49
34 - Helguera Industrial	88.752	2,66%	41%	263.595	0,81%	100	72.542	29	41	10	59
46 - Candoxy Kontor A/S	81.497	2,44%	28%	224.703	0,69%	100	39.024	27	37	9	56
16 - Somadis	76.468	2,29%	82%	247.358	0,76%	100	17.903	31	37	6	80
12 - Selangorian Ltd.	73.517	2,20%	24%	282.348	0,87%	100	34.906	17	20	5	38
24 - Meersens Meubelen	71.066	2,13%	73%	238.705	0,73%	101	20.473	16	18	4	95
71 - Elkhorn Airport	64.743	1,94%	11%	64.743	0,20%	100	64.743	29			193
39 - Centromerur d.o.o.	64.641	1,93%	59%	214.560	0,66%	100	37.240	24	26	5	35
32 - Libros S.A.	64.300	1,92%	26%	364.196	1,12%	100	60.022	18	29	12	29
49 - Beef House	60.677	1,82%	65%	305.533	0,94%	100	40.519	30	31	0	42
36 - Gagn & Gaman	60.096	1,80%	55%	489.943	1,50%	100	12.552	20	25	5	44
47 - Marsholm Karmstol	59.806	1,79%	70%	428.370	1,31%	100	49.149	32	38	4	45
23 - Woonboulevard Kuitenbrouwer	59.108	1,77%	58%	59.108	0,18%	100	59.108	17			200
28 - Lovaina Contractors	58.678	1,76%	63%	215.182	0,66%	100	26.597	24	33	11	56
26 - Nieuwe Zandpoort NV	48.693	1,46%	42%	209.037	0,64%	100	5.628	37	48	7	57
14 - Highlights Electronics Sdn Bhd	47.868	1,43%	58%	386.617	1,19%	100	29.476	21	28	6	35
Grand Total	2.345.688	70,22%	57%	7.331.199	22,50%	100	1.332.789	27	34	7	62

RECEIVABLES TABLE

Complete receivables view of top 20 Customers by Balance with special KPIs like % of Total Receivables, % of Total Sales, Sales on Credit and customers' payment habits.

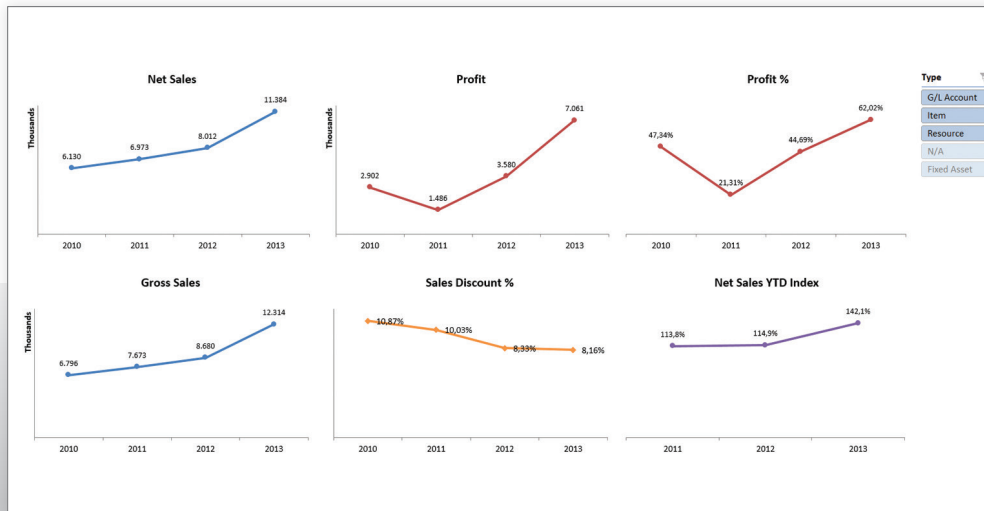


DUE AND OVERDUE STRUCTURE

Table with top 2 charts on the left shows Receivables Due / Overdue structure. The table on the right shows customer details for a specific overdue bucket.

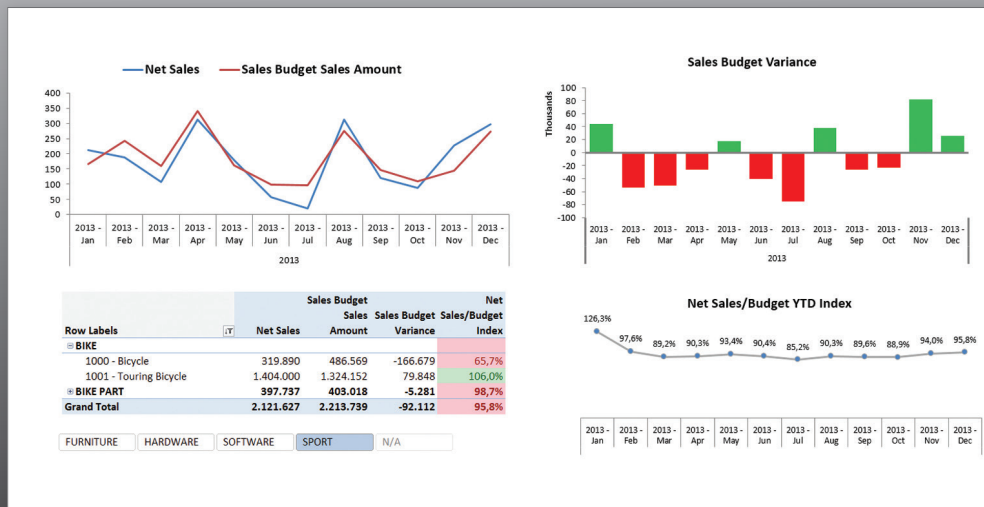
» SALES

Every organisation's sales area is different and it is difficult to predefine reports that would cover all specifics. Therefore **Sales cube** comes with **70 measures** that with combination of **25 dimensions** give insight into all parts of the sales area. Analysing sales trends, margin, parallel period and YTD sales reports extend standard reporting and makes analysing simple, powerful and quick.



SALES OVER YEARS

This dashboard includes KPIs in sales area, like Net Sales, Profit, Profit in %, Gross Sales, Sales Discount in % and Net Sales YTD Index. Type is the most important dimension as it filters sales of items from sales of services (resources), fixed assets and posting direct to GL Account.



SALES BUDGET ANALYSIS

Sales Budgets functionality and Excel makes all information more visual than ERP. This dashboard presents variance and indexes between Net Sales and Sales Budget Amount.

	Net Sales	Net Sales Last YTD	Net Sales YTD Index	Net Sales Item	Net Sales Resource	Net Sales GL	Profit	Profit %	Sales Discount Amount	Sales Discount %
36 - Gagn & Gaman	521.556	215.424	242%	488.122	22.325	11.109,00	220.537	42,3%	56.092	10,8%
60 - Hotel Pferdesee	425.493	112.098	380%	402.830	15.413	7.250,00	185.722	43,6%	58.922	13,8%
47 - Marsholm Karmstol	406.145	111.765	363%	384.405	13.715	8.025,00	194.999	48,0%	27.304	6,7%
10 - Progressive Home Furnishings	350.157	86.144	406%	331.800	12.007	6.350,00	235.351	67,2%	61.433	17,5%
41 - Sonnmatt Design	342.487	90.935	377%	313.587	17.950	10.950,00	119.322	34,8%	41.332	12,1%
64 - Klubben	333.819	240.471	139%	310.731	14.742	8.346,00	157.536	47,2%	33.983	10,2%
70 - Candoxy Canada Inc.	328.772	48.981	671%	306.089	13.642	9.041,00	116.675	35,5%	32.999	10,0%
73 - Möbel Scherrer AG	289.445	83.990	345%	270.341	13.431	5.673,00	126.337	43,6%	0	0,0%
32 - Libros S.A.	286.665	114.463	250%	267.827	10.835	8.003,00	125.132	43,7%	30.664	10,7%
44 - Designstudio Gmunden	270.410	288.835	94%	251.427	12.371	6.612,00	155.480	57,5%	11.437	4,2%
14 - Highlights Electronics Sdn Bhd	257.778	158.224	163%	238.823	10.629	8.326,00	117.410	45,5%	23.647	9,2%
67 - Afrifield Corporation	239.909	107.832	222%	226.692	9.306	3.911,00	97.873	40,8%	7.023	2,9%
26 - Nieuwe Zandpoort NV	228.129	146.312	156%	213.460	10.568	4.101,00	115.546	50,6%	9.309	4,1%
74 - J & V v.o.s.	227.644	104.488	218%	210.785	12.380	4.479,00	77.666	34,1%	19.193	8,4%
65 - Englands Kontorsmöbler AB	222.434	28.893	770%	208.710	8.948	4.776,00	113.077	50,8%	27.979	12,6%
16 - Somadis	218.358	629.180	35%	199.403	13.121	5.835,00	122.996	56,3%	31	0,0%
24 - Meersen Meubelen	204.608	100.390	204%	191.274	10.002	3.332,00	93.216	45,6%	22.799	11,1%
59 - Cronus Cardoxy Procurement	200.286	92.206	217%	182.715	11.128	6.443,00	70.951	35,4%	15.057	7,5%
28 - Lovaina Contractors	197.296	58.230	339%	170.303	18.953	8.041,00	105.704	53,6%	20.720	10,5%
46 - Candoxy Kontor A/S	193.157	131.027	147%	169.817	16.460	6.880,00	77.256	40,0%	1.984	1,0%
Grand Total	5.744.546	2.949.887	195%	5.339.141	267.922	137.483,00	2.628.784	45,8%	501.907	8,7%

TOP CUSTOMER TABLE

That's how everyone in your organisation should analyse sales data. Top 20 customers table includes Net Sales, YTD Indexes, Profit and Sales Discount in absolute value and in percentage.

FEATURE: Bill-To, Sell-To, Ship-To



		Values			
Bill-to Customer	Sell-to Customer	Ship-to Name	Net Sales	Profit %	Shipped Quantity
52 - Blanemark Hifi Shops	52 - Blanemark Hifi Shops	Blanemark Hifi Shop EAST	99.803	75%	551
		Blanemark Hifi Shop NORTH	81.432	89%	282
		Blanemark Hifi Shops	80.623	68%	1.723
		Blanemark Hifi Shop WEST	62.571	57%	361
		Blanemark Hifi Shop SOUTH	52.380	62%	392
		Blanemark Hifi Center NE	11.556	27%	300
		Blanemark Hifi Center SW	16.101	44%	538
		Fairway Sound	23.790	35%	582
		The Device Shop	330.973	59%	9.959
		CP Customer Template	181.783	74%	1.200
		Cronus Cardoxy Sales	6.286	53%	222
		Carl Anthony	38.324	51%	540
		Konberg Tapet AB	16.793	30%	969
		Deerfield Graphics Company	36.914	71%	934
Grand Total			4.668.811	63%	47.421

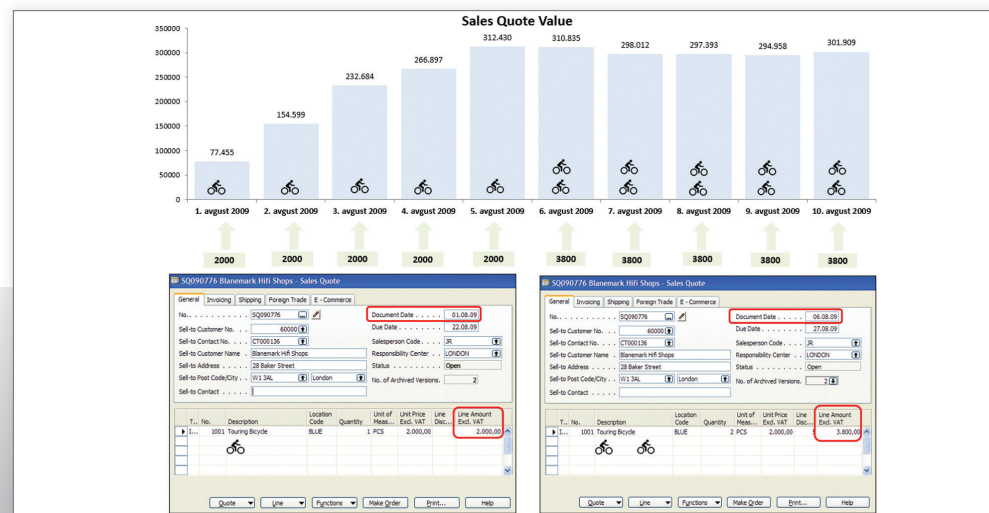
BILL-TO, SELL-TO, SHIP-TO

Unique 3 level customer structure Bill-to, Sell-to, Ship-to Customer makes it possible to analyse all sales measures (quantities and values) at any of these three levels.

» SALES ORDERS

BI4Dynamics makes a daily snapshot of all sales quotes and orders and stores them into BI4Dynamics Data Warehouse. This feature enables analysing of sales quotes and sales orders even after they are changed, processed or deleted. We can track changes in sales documents automatically, without user interference.

Sales Order Amount										
Row Labels	2013 - Sep 2013 - Oct									
	01.10.2013	02.10.2013	03.10.2013	04.10.2013	05.10.2013	06.10.2013	07.10.2013	08.10.2013	09.10.2013	
Order	179705	171910	175187	171932	175793	174163	176120	174485	167992	169731
SO-2013-0270	38997									
SO-2013-0271	34103	34103								
SO-2013-0272	38997	38997	38997							
SO-2013-0273	28600	28600	28600	28600						
SO-2013-0274	39008	39008	39008	39008	39008					
SO-2013-0275		31203	31203	31203	31203	31203				
SO-2013-0276		37380	37380	37380	37380	37380	37380			
SO-2013-0277			35742	35742	35742	35742	35742			
SO-2013-0278			32461	32461	32461	32461	32461	32461		
SO-2013-0279				37378	37378	37378	37378	37378	37378	
SO-2013-0280					33159	33159	33159	33159	33159	
Grand Total	179705	171910	175187	171932	175793	174163	176120	174485	167992	169731

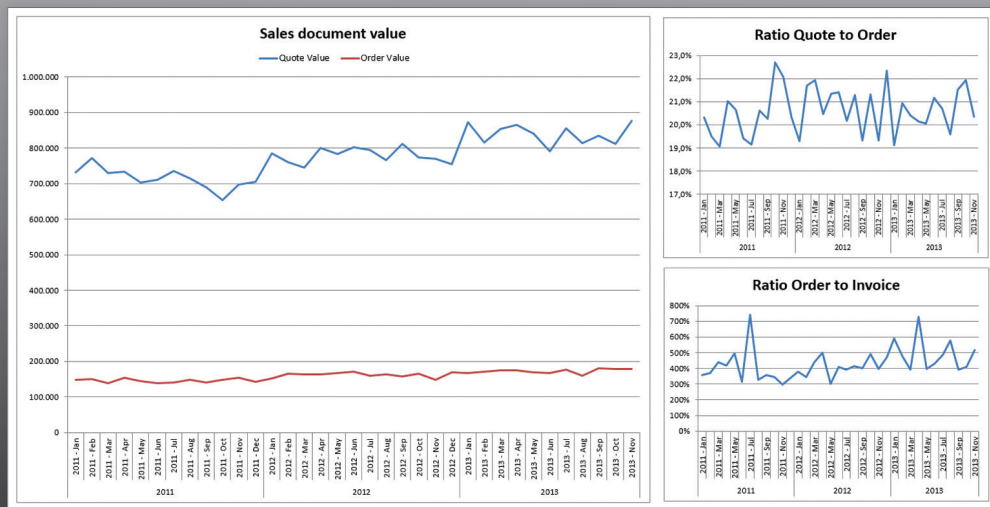


DAILY SNAPSHOTS OF SALES ORDERS

A Daily snapshots feature enables analysing of sales quotes and sales orders even after they processed, changed or deleted. Marked document has been active till 4/10/2013.

DAILY SNAPSHOT OF SALES

In this example a quote with one item has been created on 1st August. On 6th August quote line has been changed by increasing quantity and adding discount. All such changes are tracked and written into data warehouse automatically (usually daily).



SALES ORDERS DASHBOARD

Sales orders are an integral part of a Sales cube. There are 10 specific Sales Orders measures that work with any Sales dimension.

SALES ORDERS OVERVIEW

In one dashboard you can analyse sales processes with live and posted documents: sales quotes, sales orders and posted sales documents.

» FINANCE

Consolidation over multiple companies, dimensions and currencies has never been easier. Reports based on Chart of Accounts can be used in accounting but real powerful business reports are created by Account Schedules. In every case BI4Dynamics offers more flexibility and better visualizations.

Net change	January	February	March	April	May	June	July	August	September	October	November	December	Grand Total
COST													
REVENUE & COSTS													
REVENUE - Revenue	1.558.082	1.383.020	1.402.363	2.091.183	1.165.007	1.424.385	1.492.394	1.592.901	1.332.591	1.537.714	1.510.371	2.906.499	19.396.509
OC - Operating costs	233.744	228.227	217.994	218.157	213.826	225.773	220.638	223.661	229.646	228.792	219.169	219.132	2.678.760
COGS - COGS	817.104	786.046	955.427	1.312.145	669.516	753.835	791.441	1.071.184	688.475	781.670	536.756	746.802	9.910.401
C - Cost (OC + COGS)	1.050.848	1.014.273	1.173.421	1.530.302	883.342	979.608	1.012.079	1.294.846	918.121	1.010.462	755.925	965.935	12.589.161
F - Financial Items	100.000	100.000	98.421	86.837	94.187	98.150	97.707	1.082.850	1.085.420	104.927	100.000	101.899	3.150.399
TC - Total Cost	1.150.848	1.114.273	1.271.842	1.617.139	977.529	1.077.758	1.109.786	2.377.696	2.003.541	1.115.389	855.925	1.067.834	15.739.560
P - Profit	407.234	268.747	130.521	474.044	187.478	346.628	382.608	-784.795	-670.950	422.324	654.446	1.838.665	3.656.949
OPERATING COSTS													
801 - Building Maintenance	4.885	5.916	5.160	5.096	4.981	6.347	5.241	5.366	5.989	4.902	5.483	5.178	64.544
802 - Administrative	1.590	1.514	1.841	1.593	1.754	1.936	2.052	1.612	1.472	1.719	1.531	2.648	21.263
803 - Computer	44.104	38.381	37.306	39.189	37.632	36.127	38.748	37.265	40.094	41.166	37.062	39.404	466.478
804 - Selling	9.444	8.757	9.668	8.477	8.380	8.530	8.363	8.084	8.899	9.041	9.496	9.016	106.155
805 - Vehicle	4.208	3.940	3.909	4.462	4.246	4.681	3.821	4.656	4.928	3.680	4.116	4.388	51.035
* REVENUE RATIO *													
Personnel exp./ Revenue	7,76%	9,01%	8,31%	5,69%	9,93%	8,65%	8,08%	7,52%	9,11%	7,61%	7,89%	4,05%	7,4%
Operating Costs / Revenue	15,00%	16,50%	15,54%	10,43%	18,35%	15,85%	14,78%	14,04%	17,23%	14,88%	14,51%	7,54%	13,8%
COGS / Revenue	52,44%	56,84%	68,13%	62,75%	57,47%	52,92%	53,03%	67,25%	50,83%	35,54%	35,54%	25,69%	51,1%
Costs / Revenue	67,44%	73,34%	83,67%	73,18%	75,82%	68,77%	67,82%	81,29%	68,90%	65,71%	50,05%	33,23%	64,9%
Total Cost/Revenue	73,86%	80,57%	90,69%	77,33%	83,91%	75,66%	74,36%	149,27%	150,35%	72,54%	56,67%	36,74%	81,1%

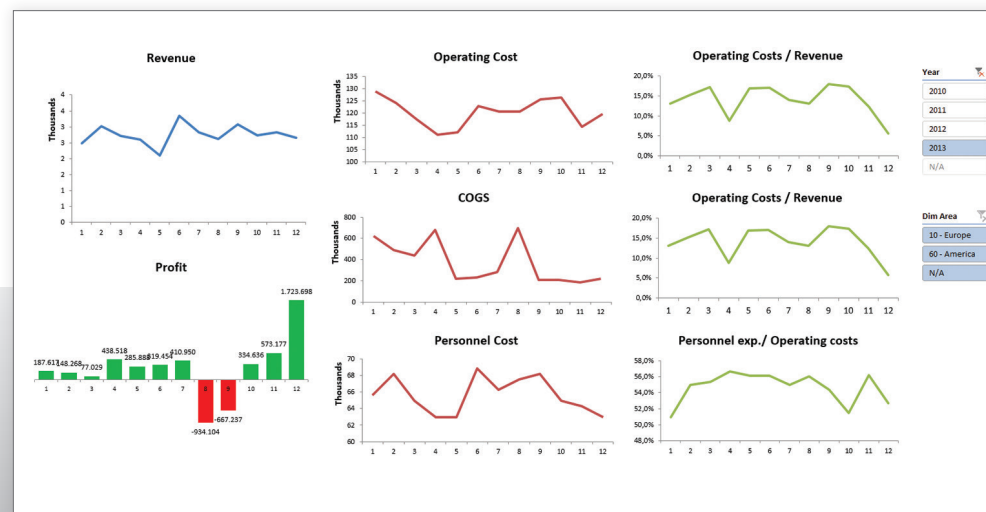
ACCOUNT SCHEDULES @ PIVOT TABLES

In Microsoft Dynamics NAV users can define their own Account Schedule, after processing it with BI4Dynamics Account Schedules will be shown in Excel. 100% flexibility. No IT staff. No IT vendor.

PL	Net change	GL Budget Amount YTD	GL Budget Variance	Budget Index	Year
INCOME STATEMENT					
101 - REVENUE (102..106)	11.384.464	10.216.443	1.168.021	111%	2010
102 - n Retail	11.384.297	9.747.938	1.636.359	119%	2011
103 - n Raw Materials	260.815	749.169	-488.354	35%	2012
104 - n Resources	468.544	537.140	-68.596	87%	2013
105 - n Jobs					N/A
106 - n Other	-929.191	-817.803	-111.388	114%	
201 - COSTS OF GOODS SOLD (202..206)	4.491.912	5.021.474	-529.562	89%	Budget
202 - n Retail	4.418.656	6.266.256	-1.847.600	71%	2013-1
203 - n Raw Materials	74.080	323.381	-249.301	23%	2013-2
204 - n Resources					N/A
205 - n Jobs					
206 - n Capacities	-823	-1.568.162	1.567.339	0%	
208 - GROSS INCOME	6.892.552	5.194.969	1.697.583	133%	
300 - EXPENSES (301+307..309)	1.442.681	1.858.330	-415.649	78%	Schedule Name
301 - Operating expenses (302..306)	376.292	582.572	-206.280	65%	COST
302 - n Building Maintenance	32.994	48.702	-15.709	68%	PL
303 - n Administrative	11.553	15.952	-4.399	72%	
304 - n Computer	248.463	365.586	-117.123	68%	
305 - n Selling	56.514	80.847	-24.333	70%	
306 - n Vehicle	26.767	71.485	-44.718	37%	
307 - Other Operating expenses	259.135	402.327	-143.192	64%	
308 - Personnel	787.856	842.812	-54.956	93%	
309 - Fixed Asset Depreciation	19.398	30.619	-11.221	63%	
310 - Net income before operations	5.449.871	3.336.639	2.113.232	163%	
400 - Financial items	600.000	600.000	0	100%	
500 - NET INCOME	4.849.871	2.736.639	2.113.232	177%	

PROFIT AND LOSS STATEMENT WITH BUDGETS

This table represents Profit and Loss statements made with Account Schedules. BI4Dynamics enables comparison of one or more budgets with YTD measures which are available in almost all important measures.



ACCOUNT SCHEDULES @ DASHBOARDS

This dashboard shows charts that are based on Account Schedules. All charts are connected with slicers that filter requested information. Such dashboards can be created in few minutes.

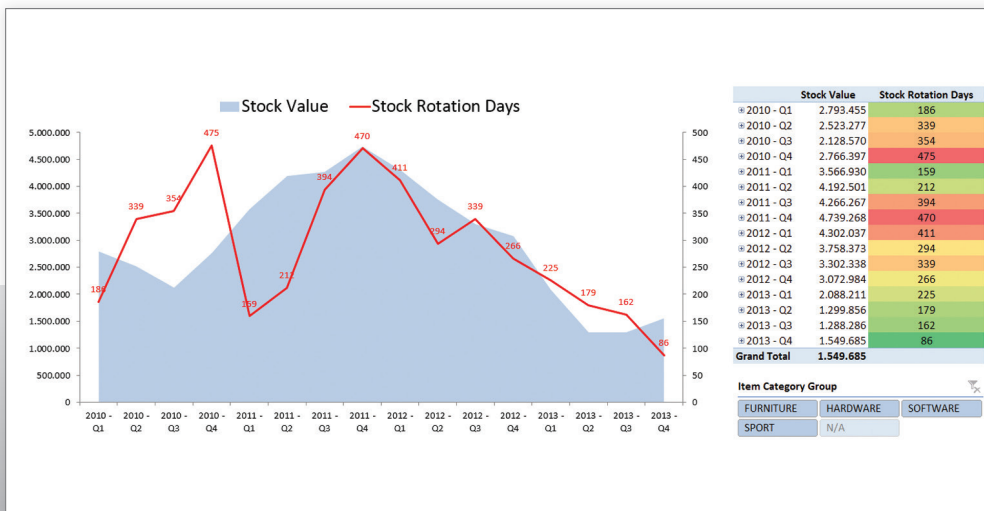
Schedule Name	Net Change	CRONUS 2010 Netherlands	CRONUS 2010 UK	Grand Total
BS	PL			
CAPITAL				
COST				
PL				
PL SCHOOL				
Year				
2008				
2009				
2010				
2011				
2012				
2013				
N/A				
101 - REVENUE (102..106)				
102 - n Retail	6.718.235	4.898.863	14.285.389	
103 - n Raw Materials	199.898	343.252	543.149	
104 - n Resources	426.451	242.668	669.118	
106 - n Other	667.462	666.684	1.334.145	
201 - Cost (202+203+204+205+206+207)				
202 - n Retail	5.133.614	3.876.693	9.978.953	
203 - n Raw Materials	113.528	62.977	50.552	
206 - n Capacities	171.347		671.347	
208 - GROSS INCOME				
208 - GROSS INCOME	2.593.556	2.211.796	4.805.353	
300 - EXPENSES (301+307..309)				
301 - Operating expenses (302..306)	333.183	267.280	600.463	
302 - n Building Maintenance	31.550	24.280	55.830	
303 - n Administrative	9.709	8.395	18.105	
304 - n Computer	218.015	173.891	391.906	
305 - n Selling	49.641	42.257	91.898	
306 - n Vehicle	24.268	18.456	42.725	
307 - Other Operating expenses	235.688	119.482	355.170	
308 - Personnel	647.808	391.040	1.038.848	
309 - Fixed Asset Depreciation	19.401	3.252	22.653	
310 - Net income before operations	1.357.476	1.430.743	2.788.219	
400 - Financial items				
400 - Financial items	600.000	600.000	1.200.000	
500 - NET INCOME				
500 - NET INCOME	757.476	830.743	1.588.219	

MULTI COMPANY PROFIT AND LOSS STATEMENT


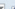
Account Schedules Multi Company feature enables using one Account Schedule across multiple companies and calculates GL transactions based on local Chart of Account which may be different across companies.

» INVENTORY

BI4Dynamics enables powerful inventory value and quantity analysis over multiple dimensions. To avoid typical difficulties with inventory valuation in ERP systems, daily snapshots of data are created in data warehouse to provide fast and agile analysis.



STOCK ROTATION IN DAYS

Column Labels 						
Aging Stock Value			Aging Stock Value in %			
2013			2013			
Row Labels 	2013 - Jan	2013 - Feb	2013 - Mar	2013 - Jan	2013 - Feb	2013 - Mar
under 10 days	18.318	15.905	12.429	13,9%	12,6%	10,4%
10 - 20 days	12.493	12.101	10.466	9,5%	9,6%	8,8%
20 - 30 days	6.810	6.308	4.854	5,2%	5,0%	4,1%
30 - 40 days	7.468	6.898	6.713	5,7%	5,4%	5,6%
40 - 80 days	8.578	8.091	8.036	6,5%	6,4%	6,8%
80 - 120 days	11.287	11.139	11.034	8,6%	8,8%	9,3%
120 - 180 days	35.394	35.394	35.347	26,9%	27,9%	29,7%
180 - 270 days	19.491	19.474	18.762	14,8%	15,4%	15,8%
270 - 365 days	7.563	7.389	7.389	5,8%	5,8%	6,2%
1 - 2 years	1.309	1.309	1.309	1,0%	1,0%	1,1%
2 - 3 years	2.639	2.639	2.639	2,0%	2,1%	2,2%
Grand Total	131.348	126.647	118.977	100,0%	100,0%	100,0%

INVENTORY AGING

Inventory Aging is a powerful feature which allows you to analyse Inventory Aging by predefined Aging Groups, which can be adapted to the specific industry.

Measures are from:		Inventory					Sales				Purchase		
		Opening Stock	Value Increase	Value Decrease	Value	Quantity	Net Sales	Sales Invoiced Quantity	Profit %	Net Sales YTD Index	Cost Amount	Purchase Invoiced Quantity	
Row Labels	<input checked="" type="checkbox"/>												
1896 - ATHENS Euro Chair		165.817	28.876	5.023	23.853	-27	54.257	84	91%	118%	28.876	57	
1900 - PARIS Guest Chair		215.162	6.533	2.710	3.823	40	3.378	27	20%	42%	6.533	67	
1908 - LONDON Swivel Chair		10.204	2.595	1.897	698	-33	7.145	60	73%	104%	2.595	27	
1924 - CHAMONIX Storage Unit		27.527	1.142	0	1.142	14				141%	1.142	14	
1968 - MEXICO Swivel Chair		19.630	865	96	769	7	247	2	61%	138%	865	9	
1972 - MUNICH Swivel Chair		53.515	5.574	2.818	2.756	31	3.243	27	13%	133%	5.574	58	
1980 - MOSCOW Swivel Chair		37.836	865	0	865	9				165%	865	9	
1988 - SEOUL Guest Chair		27.788	878	0	878	9				100%	878	9	
1990 - CALGARY Whiteboard		146.897	29.761	24.604	5.158	10	31.194	32	21%	136%	29.761	42	
7201 - Doorknob		588	17	65	-49	-68	102	96	36%	144%	17	28	
Grand Total		704.962	77.105	37.213	39.892	-8	99.565	328	63%	117%	77.105	320	

SALES, PURCHASE AND INVENTORY DATA ON ONE REPORT

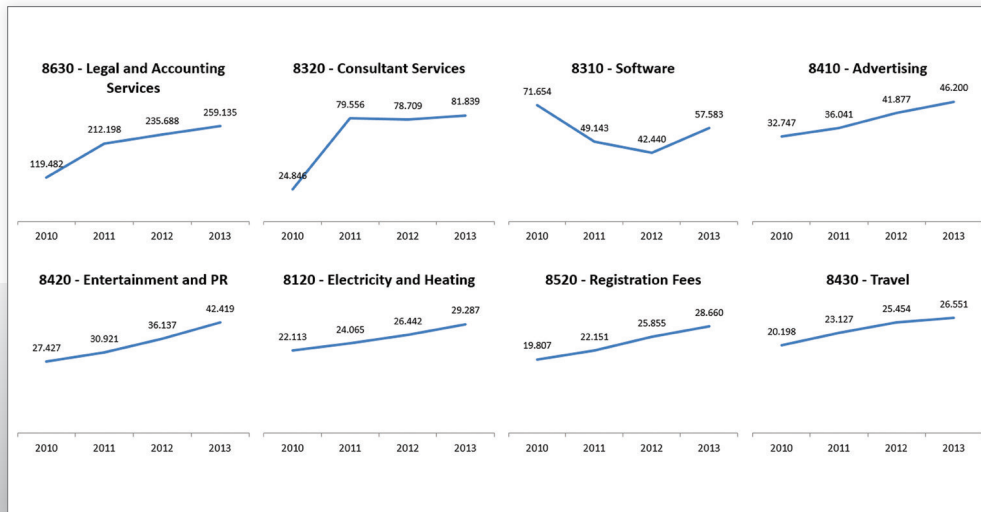
Measures		Measures		Dimensions	
Date YMD	All	Date YMD	All	Company	All
Values		Values		Date YMD	All
Stock Quantity	10.319	Value Decrease	17.784.725	Item by Category by Product Group	All
Stock Value	1.549.685	Opening Stock Quantity	0	Item by Gen Prod Posting Group	All
Avg Stock Quantity	61.966	Opening Stock Value	0	Item by Vendor	All
Avg Stock Value	2.951.290	Min Stock Quantity in Time Span	10.319	Item Ledger Entry Type	All
Quantity	10.319	Max Stock Quantity in Time Span	10.319	Reason Code	All
Quantity Increase	287.436	Min Stock Value in Time Span	1.549.685	Source Code	All
Quantity Decrease	277.117	Max Stock Value in Time Span	1.549.685	Location	All
Invoiced Quantity Increase	287.436	Value ACY	1.549.685		Value
Invoiced Quantity Decrease	277.117	Value Increase ACY	19.334.410	⊗ Purchase	14.478.459
Value	1.549.685	Value Decrease ACY	17.784.725	⊗ Sale	-16.671.098
Value Increase	19.334.410	Stock Rotation Days		⊗ Positive Adjmt.	4.000.720
		Stock Rotation Coefficient		⊗ Negative Adjmt.	-258.395
				⊗ Transfer	0
				Grand Total	1.549.685

MEASURES AND DIMENSIONS

Inventory cube comes with 23 detailed measures and 9 dimensions that cover all aspect of inventory analysis.

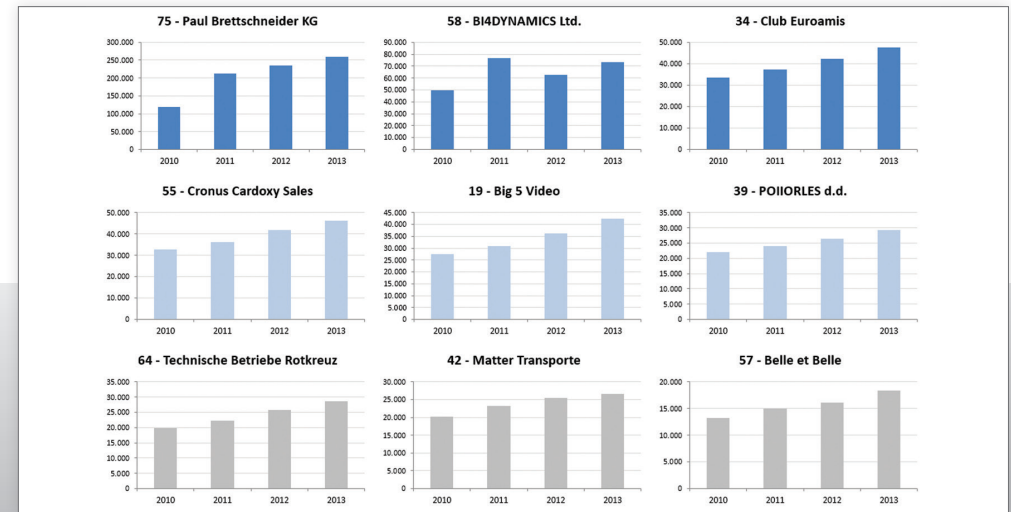
» PURCHASE

Are you able to track the status of purchased and supplied items? Purchase module enables you complete purchase analysis with multiple measures and dimensions over multiple companies and currencies. Purchase by Type, Purchase by Top Vendors by Type, Purchase by Top 10 Vendors by Purchased Items analysing has never been easier.



TOP 8 SERVICE (GL) COSTS PER YEAR

For a complete purchase overview, this dashboard includes the top 8 Costs Amount from General Ledger entries.



TOP VENDORS DASHBOARD OVER YEARS

For a strategic overview we use the Top Vendors Dashboard which displays top 9 vendors by Purchase Amount.



COST AMOUNT ITEM VS AVERAGE PURCHASE PRICE

On this graph you can see Cost Amount Item which includes all costs booked on item in selected date period and Average Purchase Price.

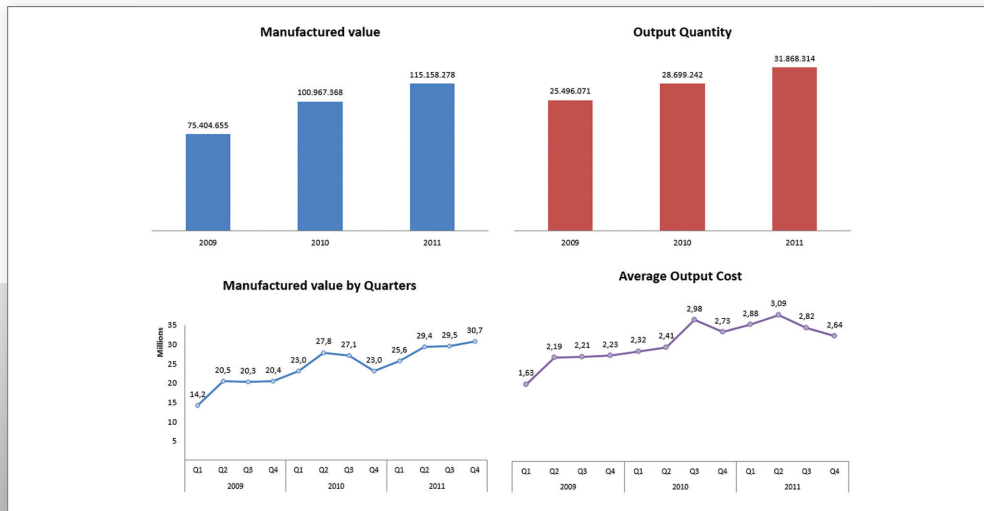
Cost Amount						Cost Amount			Avg Purchase Price		
	2010	2011	2012	2013	Grand Total	Item	Item	Item	Price	Price	Price
FURNITURE	970.538	2.406.278	1.077.166	843.281	5.297.263	1000 - Bicycle	3.406.004	26,8%	1.977		
ACCESS	292.183	167.781	38.354	481	498.799	2000 - BI4Dynamics NAV	2.058.183	16,2%	3.196		
BOARD	200.269	1.310.554	641.664	354.160	2.506.646	1001 - Touring Bicycle	1.862.231	14,7%	1.147		
CHAIR	389.881	732.082	297.282	473.580	1.892.825	1896 - ATHENS Euro Chair	658.352	5,2%	424		
STORAGE	88.205	195.861	99.866	15.060	398.992	1974 - SAPPORO Whiteboard	605.903	4,8%	687		
HARDWARE	145.160	272.908	158.650	19.112	595.831	1996 - ATLANTA Whiteboard	518.411	4,1%	683		
ACCESSORY	144.183	104.097	63.998	4.117	316.395	2010 - BI4Dynamics AX	465.173	3,7%	1.137		
COMPUTER	664	72.467	45.360	10.342	128.832	1990 - CALGARY Whiteboard	420.863	3,3%	661		
DISK	136	37.248	20.221	743	58.348	1900 - PARIS Guest Chair	414.601	3,3%	116		
MONITOR	177	35.173	16.246	2.826	54.423	2020 - BI4Dynamics CRM	362.385	2,9%	581		
RAM		23.923	12.826	1.085	37.833	1984 - SARAJEVO Whiteboard	357.376	2,8%	679		
SOFTWARE	18.957	1.830.558	1.253.261	36.059	3.138.836	1992 - ALBERTVILLE Whiteboard	326.564	2,6%	656		
BI	16.337	1.690.279	1.162.166	16.959	2.885.741	1970 - GRENOBLE Whiteboard	277.528	2,2%	701		
ERP	2.620	140.279	91.096	19.100	253.095	7006 - Pedestal	174.039	1,4%	214		
SPORT	1.987.484	2.776.624	41.784	640.637	5.446.529	1920 - CAPETOWN Leisure Chair	155.653	1,2%	314		
BIKE	1.947.624	2.693.120	0	627.491	5.268.235	1908 - LONDON Swivel Chair	147.976	1,2%	28		
1000 - Bicycle	1.283.624	1.693.120	0	429.260	3.406.004	4006 - Inspari Mouse	135.696	1,1%	3		
1001 - Touring Bicycle	664.000	1.000.000	0	198.231	1.862.231	1924 - CHAMONIX Storage Unit	120.078	0,9%	79		
BIKE PART	39.860	83.504	41.784	13.146	178.294	1972 - MUNICH Swivel Chair	119.656	0,9%	93		
Grand Total	3.122.140	7.286.368	2.530.861	1.539.089	14.478.459	2071 - MS Dynamics CRM Lite	114.486	0,9%	178		
						Grand Total	12.701.157	100,0%	185		

TOP 20 PURCHASED ITEMS

Table on the left presents Items by Item Category Group which can be drill down to item attribute. Table on the right presents top 20 purchased items by Cost Amount.

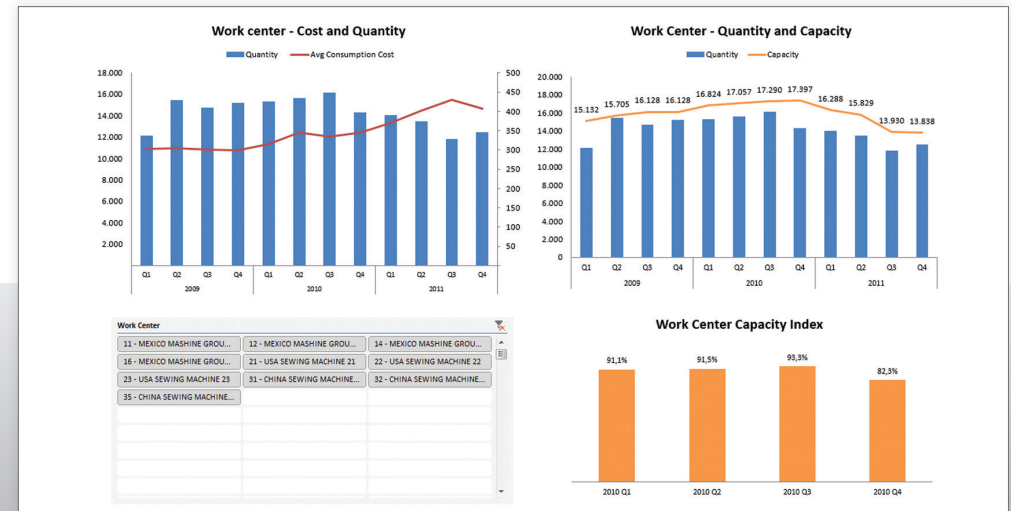
» MANUFACTURING

Powerful, agile, simple analysis across different manufacturing processes. With BI4Dynamics Manufacturing module you can monitor Production Orders, Item Composition and Consumption, Actual and Expected Quantities with Variance. Analyse Average Costs or Work in Progress over many dimensions.



MANUFACTURING OVERVIEW

Analyse Consumption and Output, Values and Quantities by Items and Work Centres.



WORK CENTER ANALYSIS

Work centre is defined (in NAV) as Machine or Resource. It can be grouped as Work Centre Group. This is an overview of work centre quantity, cost and Capacity Index over quarters.

Output by Category by Product Group									
11 - JEANS - MAGIC JOHNSON									
Column Labels									
Cost									
Cost %									
Total Cost									
Total Cost %									
Row Labels	2009	2010	2011	2009	2010	2011	2009	2010	2011
Consumption	4,348,473	9,754,205	13,431,934	100.00%	100.00%	100.00%	27,534,613	100.00%	
Item	3,141,217	8,593,842	12,665,750	72.24%	88.10%	94.30%	24,400,809	88.62%	
01 - COTTON	3,107,586	8,559,404	12,643,171	71.46%	87.75%	94.13%	24,310,161	88.29%	
01-29 - COTTON TAE									
01-21 - COTTON BACH	3,041,702	3,403,736	2,419,219	69.95%	34.90%	18.01%	8,864,658	32.19%	
04 - PACKAGING	33,631	34,438	22,579	0.77%	0.35%	0.17%	90,648	0.33%	
09-01 - PAPER/PIPE	24,529	21,198	13,043	0.56%	0.22%	0.10%	58,770	0.21%	
09-02 - WOOD	9,102	13,240	9,537	0.21%	0.14%	0.07%	31,878	0.12%	
Work Center	1,207,256	1,160,363	766,184	27.76%	11.90%	5.70%	3,133,804	11.38%	
1 - MEXICO	1,207,256	1,150,749	762,891	27.76%	11.80%	5.68%	3,120,896	11.33%	
1 - MEXICO	1,207,256	1,150,749	762,891	27.76%	11.80%	5.68%	3,120,896	11.33%	
11 - MEXICO MASHINE GROUP 11	123,786			2.85%	0.00%	0.00%	123,786	0.45%	
12 - MEXICO MASHINE GROUP 12	833,068	1,036,796	732,550	19.16%	10.63%	5.45%	2,602,414	9.45%	
16 - MEXICO MASHINE GROUP 16	250,402	113,953	30,341	5.76%	1.17%	0.23%	394,696	1.43%	
3 - CHINA		9,614	3,293	0.00%	0.10%	0.02%	12,907	0.05%	
Grand Total	4,348,473	9,754,205	13,431,934	100.00%	100.00%	100.00%	27,534,613	100.00%	

HOW HAVE ITEMS BEEN PRODUCED?

As a standard feature you can analyse how have items been produced by Item or Work Centre. You can track quantities, cost or percentages of cost at any level for all consumed items and work centres.

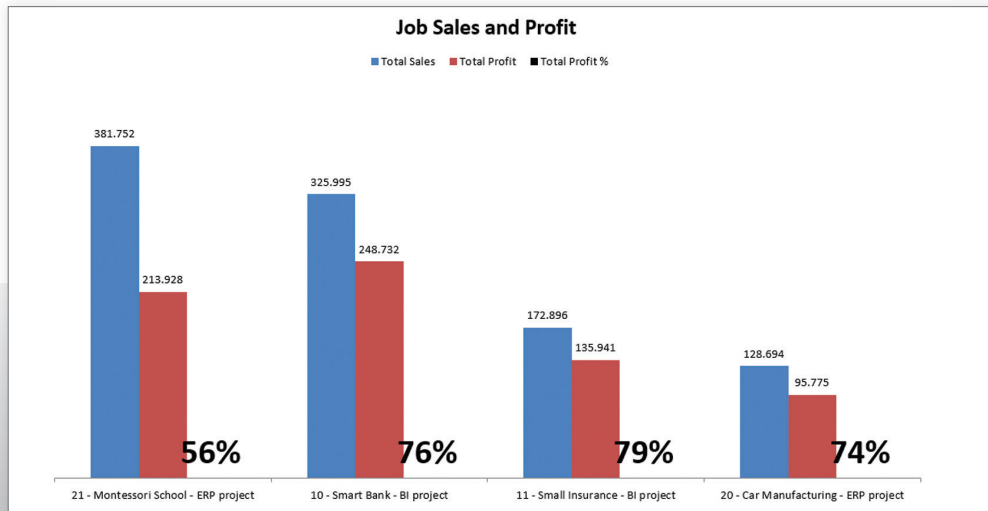
Type of consumption									
Consumed Category Group									
Composition by Category Group									
All									
Column Labels									
Cost									
Cost %									
Total Cost									
Total Cost %									
Row Labels	2009	2010	2011	2009	2010	2011	2009	2010	2011
17 - YOUNG FASHION BRANDS	741,495	953,060	1,078,881	68.32%	68.14%	67.64%	2,775,437	67.99%	
171 - CASSUCI JEANS	152,607	141,151	145,964	14.06%	10.09%	9.15%	439,722	10.78%	
172 - PEPE JEANS	588,889	811,909	932,917	54.26%	58.05%	58.49%	2,333,715	57.21%	
10 - JEANS - LANCE ARMSTRONG	101,361	150,116	169,579	9.34%	10.73%	10.63%	421,056	10.32%	
15 - SPORTSWEAR - MICHAEL SCHUMACHER	104,086	122,446	167,295	9.59%	8.75%	10.49%	393,827	9.65%	
12 - JEANS - LEO MESSI	46,167	64,226	67,168	4.25%	4.59%	4.21%	177,561	4.35%	
13 - JEANS - ANDRE AGASSI	24,463	33,782	39,066	2.25%	2.42%	2.45%	97,311	2.39%	
11 - JEANS - MAGIC JOHNSON	33,631	34,438	22,579	3.10%	2.46%	1.42%	90,648	2.22%	
16 - SPORTSWEAR - REINHOLD MESSNER	30,530	29,400	3,643	2.81%	2.10%	0.23%	63,573	1.56%	
14 - JEANS - LADY GAGA		6,271	38,458	0.00%	0.45%	2.41%	44,729	1.10%	
19 - HIGH FASHION BRANDS	3,548	4,994	8,429	0.33%	0.36%	0.53%	16,971	0.42%	
Grand Total	1,085,281	1,398,733	1,595,099	100.00%	100.00%	100.00%	4,079,113	100.00%	

WHERE ITEMS HAVE BEEN CONSUMED?

This table can be a great help to understand where an item or work centre has been consumed.

» JOBS AND RESOURCES

Powerful analysis of jobs and resources, which gives answers to budgets, costs and profits in just one report. Job and Resources module provides the ability to compare budgets, costs and profit at the same time in one report for a specific project.



JOB SALES AND PROFIT

Most commonly used measures when analysing Jobs and Resources are Sales, Cost, Profit, and Hour Consumptions by all Job Line Types.

Job Scheduled and Contracted

Row Labels	Total Sales	Total Cost	Hour Consumption	Total Contracted Cost	Total Contracted Sales	Total Scheduled Cost	Total Scheduled Sales
Resource	219.145	75.131	3.430	68.500	-151.000	73.000	159.000
DEV - Development	73.561	41.363	1.838	40.500	-72.000	45.000	80.000
CON - Consulting	70.200	14.496	644	18.000	-64.000	18.000	64.000
LEAD - Project Leading	60.443	18.498	905				
T - Travel	14.941	774	43	10.000	-15.000	10.000	15.000
Grand Total	219.145	75.131	3.430	68.500	-151.000	73.000	159.000

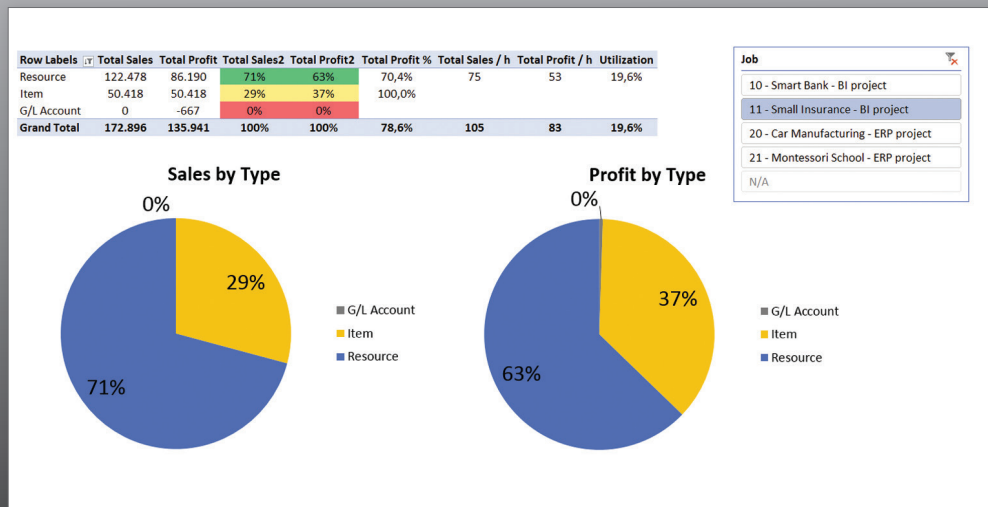
Job by Job Task

Job: 10 - Smart Bank - BI project
Date YMD: All

Row Labels	Total Sales	Total Cost	Total Profit	Total Profit %	Total Sales / h	Total Profit / h	Utilization
1100 - Development	94.904	31.552	62.752	66,5%	67	44	16,9%
1200 - Specification	2.809	1.530	1.279	45,5%	45	20	0,8%
1500 - Development	88.862	27.852	61.010	68,7%	71	49	15,0%
1800 - Testing	2.633	2.170	462	17,6%	27	5	1,2%
2000 - Implementation	231.691	45.710	185.981	80,3%	115	92	24,1%
2100 - Installation	143.398	27.418	115.980	80,9%	118	95	14,6%
2400 - Education	84.349	18.134	66.216	78,5%	106	83	9,5%
2700 - Go-live	3.943	158	3.785	96,0%	1.314	1.262	0,0%
Grand Total	325.995	77.262	248.732	76,3%	95	73	41,1%

JOB BY JOB TASK

Jobs and Resources cube covers all important measures; Actual, Scheduled and Contracted Type of measures.



JOB BY LINE TYPE

Job Line Type (Item, Resource, GL Account) is commonly used parameter for job planning, execution and analysis.

Row Labels	Total Sales	Total Cost	Total Profit	Total Profit %	Utilization	Resource			
						Item Sales Actual	Sales Actual	Total Sales / h	Total Profit / h
10 - Smart Bank - BI project	325.995	77.262	248.732	76,3%		106.849	219.145	95	73
2009	178.653	47.643	131.011	73,3%		34.583	144.070	84	62
2010	78.441	21.394	57.048	72,7%		56.534	21.908	83	60
2011	68.900	8.226	60.674	88,1%		15.732	53.168	190	167
11 - Small Insurance - BI project	172.896	36.954	135.941	78,6%		50.418	122.478	105	83
2009	40.052	7.623	32.429	81,0%		36.531	3.521	112	90
2010	104.036	23.267	80.769	77,6%		4.231	99.805	103	80
2011	28.808	6.064	22.744	79,0%		9.656	19.152	108	85
20 - Car Manufacturing - ERP project	128.694	32.918	95.775	74,4%		10.709	117.720	91	68
2009	50.220	16.197	34.023	67,7%		0	50.220	74	50
2010	47.367	10.760	36.606	77,3%		9.642	37.460	102	79
2011	31.107	5.961	25.146	80,8%		1.067	30.040	117	95
21 - Montessori School - ERP project	381.752	167.824	213.928	56,0%		75.831	299.943	53	30
2009	15.482	10.637	4.846	31,3%		422	15.061	34	11
2010	139.507	37.444	102.063	73,2%		42.853	96.654	90	66
2011	226.762	119.743	107.019	47,2%		32.556	188.228	43	21
Grand Total	1.009.336	314.959	694.376	68,8%		243.807	759.286	74	51

JOB BY YEAR TABLE

Job by Year with advanced measures Item Sales Actual, Resource Sales Actual, Total Sales per Hour and Total Profit per Hour presented in formatted table.

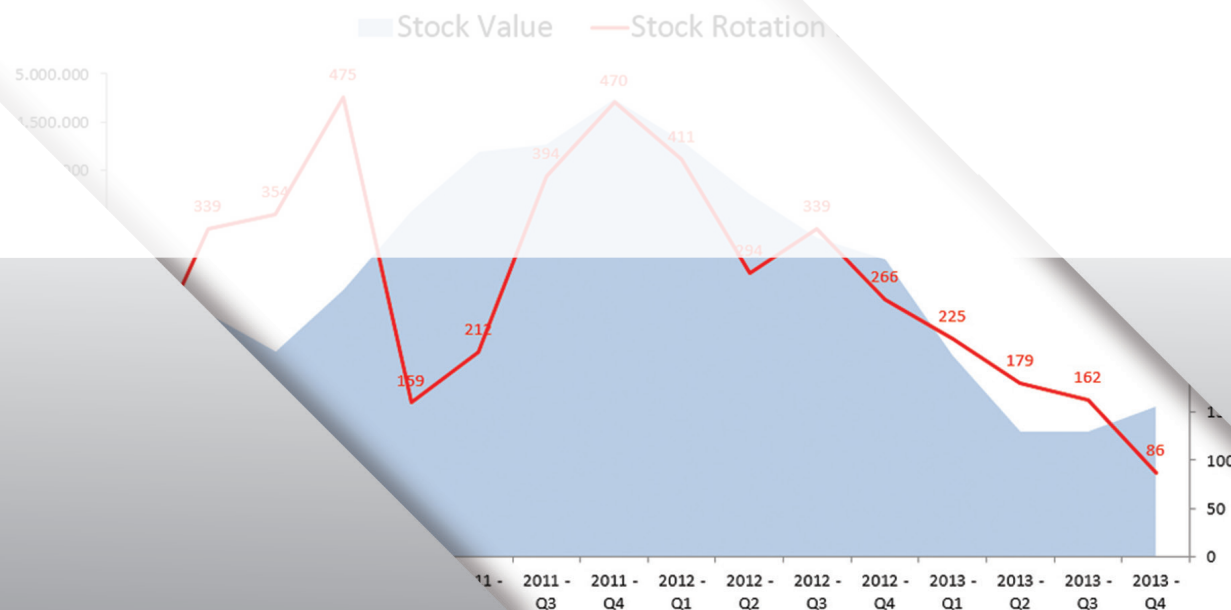
Item Category Group

FURNITURE HARDWARE SOFTWARE

SPORT N/A

» CONTACT US

sales@bi4dynamics.com
www.bi4dynamics.com



Sales

Sales				Sales Invoiced		
Value	Decrease	Value	Quantity	Net Sales	Quantity	Profit
5.023	23.853	-27	54.257	84		
6.533	2.710	3.823	40	3.378	27	
2.595	1.897	698	-33	7.145		
1.142	0	1.142	14			
630	865	96	769	7	247	
53.515	5.574	2.818	2.756	31	3.2	
37.836	865	0	865	9		
27.788	878	0	878	9		
146.897	29.761	24.604	5.158	10		
588	17	65	-49			
704.963	77.105	37.213	39.892			

» FREE TRIAL

Try BI4Dynamics NAV using your data and infrastructure free for 30 days.

» TRY ON LINE

Try BI4Dynamics on line and test BI4Dynamics structures on different front-end tools.