

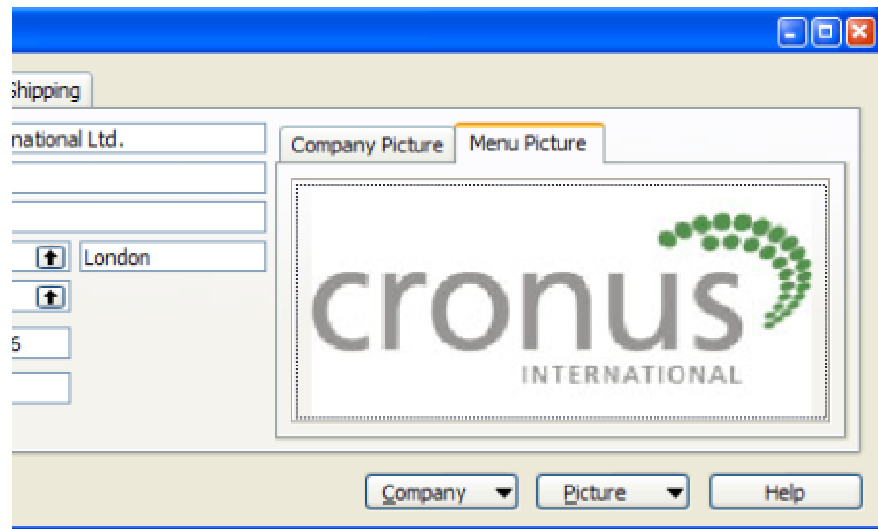
Picture Resolution in Navision

When importing a picture in Navision, chances are the resolution gets all messed-up. This document describes how to format a picture so it shows like it should in Navision.

When viewing a picture in Windows the picture looks like this:
The problem



But when importing this very same picture in Navision it will look like this:

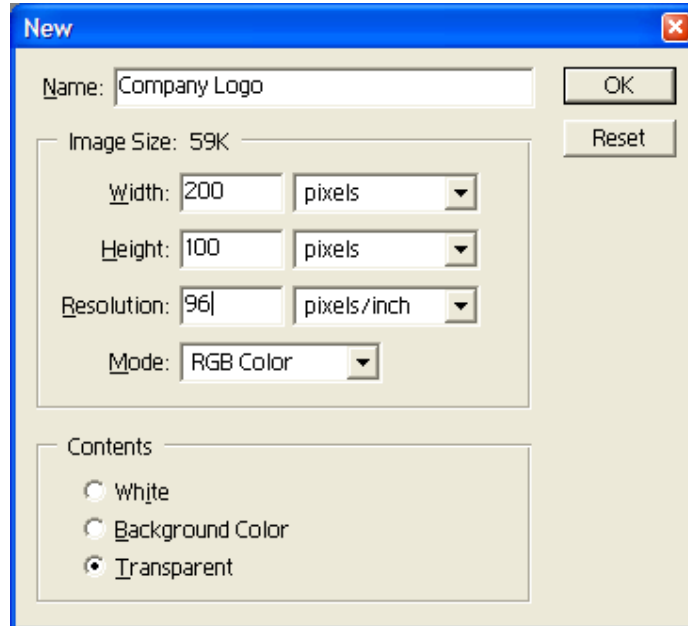


As you can see the resolution of the picture in Navision is not the way it should be.

The solution

The picture format has to be changed. Save a picture as a .bmp file with a resolution of 96 pixels.

This screenshot is from Adobe Photoshop.



To be able to change picture settings and convert pictures to other formats (types) you have to use special programs. Windows Paints is not enough.