

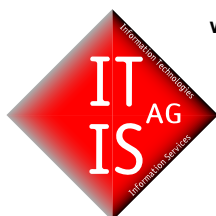


Information Brochure

Now learn about the most
versatile and experienced solution for
Microsoft Dynamics NAV and SharePoint



The new web client and integration for Microsoft® Dynamics®
NAV on Microsoft SharePoint 2010 / 2007, Microsoft
SharePoint Foundation and Windows SharePoint Services 3.0



we create
worlds on the
web

IT IS AG
P.O. Box 3141
84037 Landshut
Germany

+49 8703 9069 0
kontakt@itis.de

IT IS US
Tower 1660, Suite 906
1660 South Albion Street
Denver, Colorado 80222
U.S.A.

+1 720 381 1380
contact@itis.us

IT IS IN
No. 19, 2nd Floor, K.N. Govinda Reddy Layout,
Near Arekere Mico Lt., Bannerghatta Main Road
Bangalore - 560076, Karnataka
India

+91 804 153 6121
contact@itis.de

www.itis.de



Table of contents

Page	Subject
3	Introduction
	Overview: This is IT IS active 2010 SP2
4	Optimize daily business processes for more success
5	All the needed information at hand
6	Only one web part: IT IS active 2010 keeps it simple
	Technics and solutions
7	AJAX technology and intranet solutions
8	Project management made easy
9	Matrix Web Parts for time entries and budgets
10	Field based filtering in lists
11	Lightbox PopUps for more user-friendliness
12	Managing documents
13	Upload NAV documents directly in the SharePoint
14	Little helpers – Big impact
15	Search global and find quickly
16	Contact list meets calendar
17	Workflows with Microsoft Dynamics NAV and SharePoint
18	Workflows: Automatically notification
19	Anywhere, at any time, on any web device
	Communication architecture
20	Web services communication
21	Secure and scalable architecture
22	Comparison of
23	NEP, IT IS activigence, NAV7, IT IS active 2010 SP2
24	Contact information



Now IT IS time for the team

Imagine that everybody has suitable information at the right place and at the moment he or she needs it. Live. Online. Right now! Imagine that employees, vendors, partners, sales force and management build a strong team to make their stance in today's tough market place. Get it now with IT IS active 2010 and experience the power of connected people, always on and in the game.

Service

**Customer
Relationship Management**

Project Management

Management Dashboard

Time & Expenses

Human Resources

E-Procurement

Employee Education

**Finance Management
Leaves**

Warehouse

Be in the game!





Overview: This is IT IS active 2010 SP2

Enterprise Resource planning (ERP) is about processes in organizations. Fitting together, they can tremendously lower the amount of work. Centralizing the flow of financial data and data on goods and resources is the heart and soul of it. But it is locked in!

Optimize daily business processes for your company's success

You will get an enormous increase of effectiveness of your daily work. This is the SharePoint story, now extended towards your most crucial business system and fully leveraged throughout your organizations.



IT IS active becomes a solution that runs basically out of the box. Little setup and compelling packages helps you generate quick results.

Take our twelve (12) predefined solutions for your intranet environment to incredibly increase the effectiveness of your daily work. Your people will love to discover the possibilities of IT IS active 2010 SP2 today.

Imagine what's possible when you have the same access to your data on the road just as at your desk in the office. Now manage and use ERP data and documents across the entire line of business and create a system where all resources of your company can be wisely used and managed.

Again, look at it just for sales: Use your customer information from ERP and CRM systems, combine with Microsoft Office documents, shared information about the intranet and link and feed internet sites with particular information.

Free up your ERP: IT IS active 2010 for NAV is the best foundation for your web based business

There are numerous information buried in your ERP system that would be so helpful to provide to the trustworthy members of your organization. Sometimes this vital info is just copied to Excel sheets, which can get lost and outdated.

Here you can let your people work on the actual data at any time. With our solution, you can share all kind of data on a web basis. A web browser is sufficient to get things done. Easy - IT IS.



The role based configurations makes it more straight forward than ever for you to maintain your data. Various departments (like Marketing, Sales, Accounting, etc...) can be defined as roles. These roles can consequently be assigned to various groups (i.e. - sales areas, districts, type of users) with their respective users. Using this configuration to build a failsafe role structure to map your ERP data with the users.

All the needed information at hand, whether it is data or documents

Visualizing business documents of all types is one of the great advantages with IT IS active 2010 SP2. In this manner invoices, inventory and customer data as well as project sheets from Microsoft Dynamics NAV can be stored in multiple SharePoint document libraries. Using filters and parameters such as user

Customer List

Filter

General Finance Information

No.	Name	State	City	Phone No.	Rating
01121212	Spotsmeyer's Furnishings	FL	Miami	+1 305 665 6544	☆☆☆☆☆
01445544	Progressive Home Furnishings	IL	Chicago	+1 312 565.489.322	☆☆☆☆☆
To Customer	New Concepts Furniture	GA	Atlanta	+1 404 323 054 883	☆☆☆☆☆
Go to	Orders	ON	Thunder Bay	+1 807 544.303.210	☆☆☆☆☆
01905899	Quotes	MB	Elkhorn	+1 204845332200	☆☆☆☆☆
01905902	Invoices	ON	London	+44 207 901 443	☆☆☆☆☆
10000	Posted Invoices	GA	Atlanta	+1 404 3342 3432	☆☆☆☆☆
20000	The Cannon Group PLC	IL	Chicago	+1 312 644 334 343	☆☆☆☆☆
20309920	Selangorian Ltd.		PETALING JAYA, Selangor	+60 3 353 343 21	☆☆☆☆☆
	Metatorad Malaysia Sdn Bhd				

Showing 1 to 9 of 86 entries Page Range 9

The new list view of IT IS active 2010 with tabs: Now, with the new "Ranking" control you can set your best customers with up to five stars. While this is a manual ranking, it is possible to do this ranking on calculated values from various ratings like finance data, complaints, payment schedule, also. Now you are able to learn about each costumer at a glance.

The web based client is built around a unique web part. This web part allows different views and is the heart and soul of IT IS active. The configuration takes place in the NAV client, regardless whether it is the classic client or the role tailored client. Our solution requires at least NAV 3.70 supporting both native and SQL databases and is compatible up to NAV 6.1. This choice let you run the application your way and you can decide when to move to the next version on the ERP system.

permissions, predefined search information and other information makes this totally flexible. Get documents and data about customers, product and order data together at one place accessible when you need them.

Document uploading can occur through Microsoft Dynamics NAV as well as through web parts in SharePoint. This makes it possible for you to fully automate archiving of documents such as invoices.



Improved Report Handling

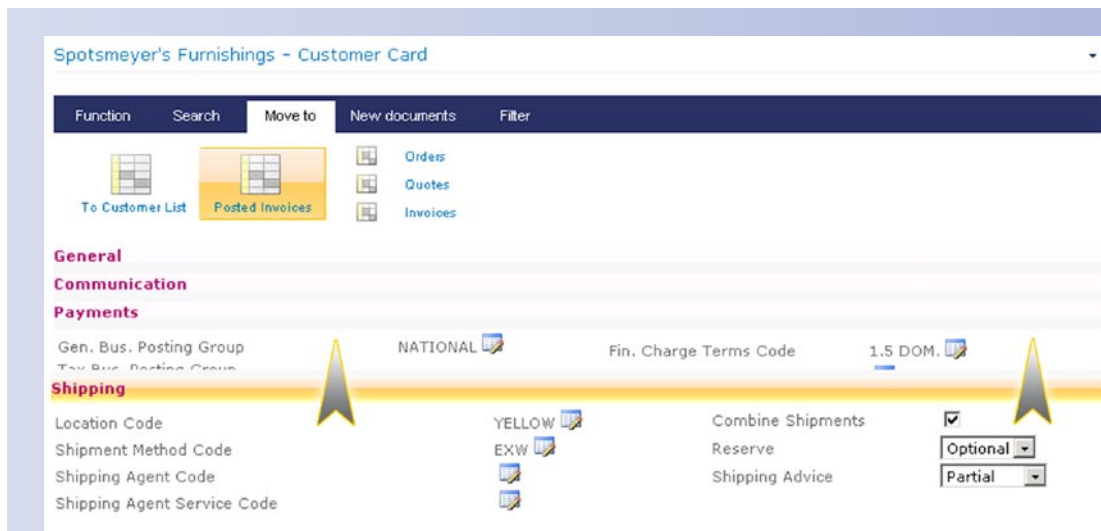
IT IS active 2010 offers an improved presentation of reports when displaying the images in a web-preview.

For the majority of reports, a start filter with parameters can be set for controlling the content and behavior of the report. In some reports there is a pop-up option where you may enter advanced report specific settings that control how the report will behave.

Only one universal web part: IT IS active 2010 keeps it simple

When we did the design of the product we had the universal approach in mind. Just one web part should be able to show and transact with all the information in the NAV system.

Whatever information the web part shall display will be put in as a configuration, thus allowing for versatility and adaptability without



The web part as a card view: You now can choose horizontal tabs that behave a little like the Dynamics NAV 2009 RTC (Role Tailored Client). Use this way of switching between various panes as a configurable alternative to the regular "style tabs" and pick from a nicely animated open and close screen effect, too.

Reports can now be created as HTML pages and together with images be saved as compacted zip files which can be uploaded then as documents into a SharePoint server document library.

The flexible report management for your company's intranet and extranet let your people use those more efficiently.

a hassle. At the end, the administrator can pick three different basic views and derive on screen displays and appropriate security settings with this easily.

At the same time the configuration of the action bar and action menus allow for direct triggering of typical methods inside the ERP system. Triggers like Insert, modify and deletion of data are accessible as well as the methods of running the business logic.



AJAX technology

With technologies such as AJAX, we offer enhanced security for your business processes. During data input, the program can process in the background, hence better program performance and improved processing time. Without loading the whole website again information between server and client can be exchanged in an asynchronous manner.

Twelve Solutions for the Intranet

Benefit from our many years of experience in developing business solutions that work. Get in touch with our preconfigured solutions that are available in addition for IT IS active 2010. E-Procurement, Customer Relationship Management, Management Dashboard, Human Resources, Time Reporting, Travel Expenses, Employee Educa-

Sales Order

Function Document Import Command Filter

New Save Delete List

General

No. 1015
 Sell-to Customer No. C00010
 Sell-to Customer Name Maple Leaf Inc.
 Sell-to Customer Name 2
 Sell-to Address Moon Lane
 Sell-to Address 2
 Sell-to State
 Sell-to ZIP Code 83294
 Sell-to City Plane Town

Sell-to Contact
 Posting Date 9/30/2009
 Order Date 9/30/2009
 Document Date 9/30/2009
 Salesperson Code Annette Hill
 Status Open
 Amount 0.00
 Amount Including Tax 0.00
 External Document No.

Invoicing

Shipping

General **Shipping**

Type	No.	Description	Quantity	Unit	Unit Price	Line Amount
Item	2020-S	BELGRAD leather co	12.00	PCS	957.00	11,484.00
Item	1964-S	TOKYO guest chair,	34.00	PCS	192.80	6,555.20
Item	1996-S	ATLANTA Whiteboar	7.00	PCS	1,397.30	9,781.10
Item	80100	Printing Paper	12.00	PACK	1.76	21.12

Filter ON Showing 1 to 4 of 4 entries Page Range 10

A sales order web part where AJAX is in action for fast and comfortable creation of order data by using quick entry lines. This allows you to enter all necessary information for a new order in a fast way.

Web part implemented AJAX elements like calendar and slider control, numeric up-down and fast tab panes are more comfortable and easy to use.

tion, Finance, Project Management, Leaves, Service and Warehouse: Almost all fields of activities are covered with our solutions that are immediately ready to use once they are installed. You will be able to modify them as you desire of cause.



Project Management made easy!

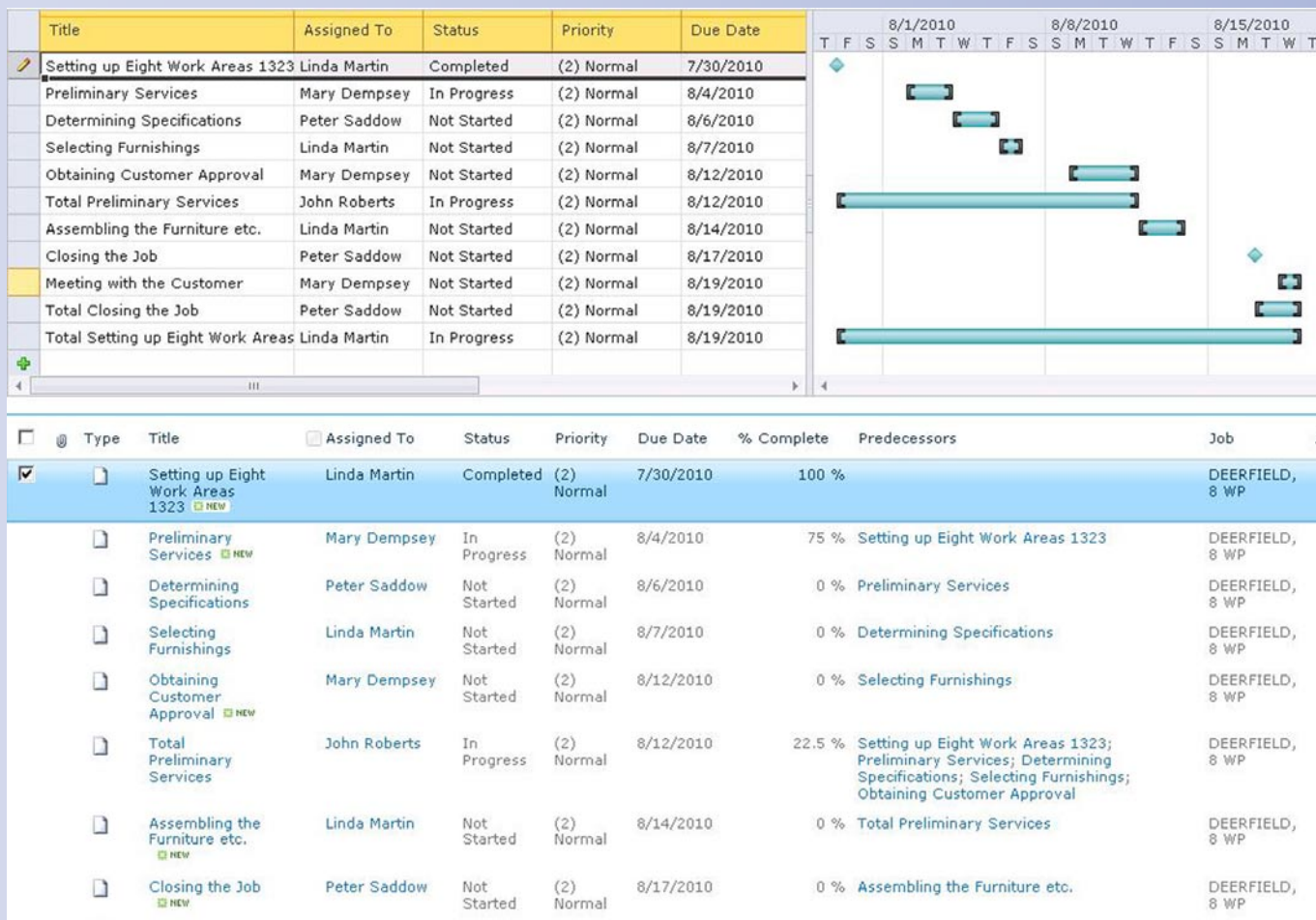
It is often difficult to keep track of what the project data contains if represented purely numerically. Do you want a clear representation of the projects you collected data for in your Microsoft Dynamics NAV system? Simply create a "project tasks" SharePoint list and import the necessary data from Microsoft Dynamics NAV.

Add more information such as start and due date, task status and percentage of completion. This will give you a graphical overview of the project and tracking of tasks is very

intuitive. Particularly for large projects it is most important to keep an eye on tasks that are still pending or already done to start with further tasks just in time.

Using a Gantt chart for visualization with IT IS active 2010 SP2 simplifies the process of planning and organizing enormously. The graphical representation is a SharePoint list populated and changed when you alter the information in the diagram. After you have modified it, IT IS active transfers to NAV.

"Enjoy your project scheduling with IT IS active 2010 Service Pack 2."



Always keep an overview of your daily work and plan every detail of upcoming projects. Get useful information like status, priority, assigned employee, title of work, predecessor, job and many more for a successful completion of the project.



Time reporting by using the time entry matrix web part

With IT IS active 2010 SP2 you create a project with the different tasks for each employee. Then, the staff members can easily capture their work time amounts for the different tasks in different projects on the SharePoint portal.

Note that the systems shows times that were committed already as grey boxes, while sum areas on the sides of the matrix keep track of the total. Your employees can view reports and export them as well.

Get an connected, actual budget with the financial budget matrix

The budget matrix is a two dimensional matrix form where the budget figures for the accounts can be entered by the people in charge. This is a great assistance for the financial department who need to collect the budget figures regularly.

While doing this, the budgeting is directly fed into the budgeted accounts, so monitoring is very easy. Use filters to see the accounts and time periods for entering values. Also filters for cost centers and cost units of general ledger accounts are there. With those you can lock down areas where the people get access.

Job Code	Job Description	Task Code	Task Description	Total	1	2	3	4	5	6	7	8	9	10
				131	9	8	8	6	9	8	8	8	8	10
<input type="checkbox"/>	300020	Setting Up Neptun Of 1100	Determining Specific	23	6	0	4	0	2	0	0	0	8	0
<input type="checkbox"/>	300020	Setting Up Neptun Of 1200	Selecting Tables	15	1	0	1	0	5	0	0	0	0	4
<input type="checkbox"/>	300020	Setting Up Neptun Of 1300	Selecting Chairs	12	1	0	2	0	2	0	0	0	0	3
<input type="checkbox"/>	300020	Setting Up Neptun Of 1400	Selecting Whiteboarc	9	1	0	1	0	0	0	0	0	0	3
<input type="checkbox"/>	300020	Setting Up Neptun Of 1500	Obtaining Customer	15	0	4	0	2	0	0	0	4	0	0
<input type="checkbox"/>	300020	Setting Up Neptun Of 1600	Positioning the tables	20	0	0	0	0	4	4	0	0	0	0
<input type="checkbox"/>	300020	Setting Up Neptun Of 1800	Mounting the whitebc	19	0	0	0	0	4	4	0	0	0	0
<input type="checkbox"/>	300020	Setting Up Neptun Of 1900	Meeting with the cust	18	0	4	0	4	0	0	0	4	0	0

The time entry matrix web part enables your employees to enter their work time easily. After reporting the hours on different projects, the employees send the time sheet to the supervisor for approval. When the amount of work is confirmed by the supervisor, the fields are marked up grey.

The great thing about doing the time entry the integrated way described above is, that once those times are processed, they serve as the source for billing processes in Microsoft Dynamics.

Entering values is just one half of the purpose: With several reports, your teams can compare the actual figures with budgeted values so that everybody is in the loop and on the budget.



Field based filtering in lists

With the enhanced local search bar you can pick a combination of several search terms. Regardless if it is a customer list, a vendor order, or any kind of custom based head/line or list entry: With the new function you gain better efficiency in finding suitable matches.

formed the filtered records are ready for further processing. Especially for large lists, the new functionality is a great time saver when searching for designated data. That is where the next feature is drawing on.

Fast navigate will help you retrieve the data set in large list

Sometimes lists with particular data can get very long. Take the list of inventory or the list of your customers - they will contain many pages.

Guesswork ends now, since IT IS active contains

a fast navigation function that guides you to the pages of interest with a link. Just enter the search term, and get the results quickly.

Chart of Accounts

Filter

Set filter | Release filter | Search for

Date Filter

General | Comparison

No.	Name	Income/Balance	Account Type	Totaling	Net Change	Balance
	Bank	None	None			
11400	Bank, Checking	Balance Sheet	Posting		4,386.79	4,386.79
11500	Bank Currencies	Balance Sheet	Posting		10,886.31	10,886.31
11600	Bank Operations Cash	Balance Sheet	Posting		405,032.77	405,032.77
25100	Long-term Bank Loans	Balance Sheet	Posting		-85,801.70	-85,801.70

Setting a fast filter at the beginning of the list will nail down the view accordingly

The input fields will be shown directly below the field labels. After the search is per-

formed the filtered records are ready for further processing. Especially for large lists, the new functionality is a great time saver when searching for designated data. That is where the next feature is drawing on.

Customer List

Filter

Fast Navigate

NameFurnishingClose

Page_1
Spotsmeyer's Furnishings
Progressive Home Furnishings
Page_2
Page_3
Page_4
Page_5
Page_6
Page_7
Page_8
Page_9

	Address	City	Invoice Copies	Rating	Salesperson Code
	612 South Sunset Drive 112	Miami	2	☆☆☆☆	PS
	ome 3332 Roosevelt Blvd.	Chicago	2	☆☆☆☆	PS
	s 888 West Peachtree Street	Atlanta	0	☆☆☆☆	PS
	ada 18 Cumberland Street	Thunder Bay	2	☆☆☆☆	JR
	rt 105 Buffalo Dr.	Elkhorn	1	☆☆☆☆	JR
	oxy bus 120 Wellington Rd.	London	1	☆☆☆☆	JR
10000	The Cannon Group PLC	192 Market Square	Atlanta	1☆☆☆☆	PS
20000	Selangorian Ltd.	153 Thomas Drive	Chicago	0☆☆☆☆	PS
20309920	Metatorad Malaysia Sdn Bhd	No 16M Jalan 1133	PETALING JAYA, Selangor	0☆☆☆☆	JR

Showing 1 to 9 of 78 entries

Page Range9

This is how can you navigate quickly: Just enter "furnishing" and it shows the pages where it is found



User-friendliness improved through light-box pop-ups

The operation of a portal, whether intranet platform or extranet platform is designed to be simple so that any user can optimally handle it.

Selections of options or to enter information with predetermined values were previously solved with new browsers (so-called pop-ups) or tabs within the same browser. Often a user gets directed to a completely different page. Especially if there was a wide range of options pop-ups were popular choices.

IT IS active 2010 SP2 supports light-box pop-ups and those are opened in the same detail page of your portal. The light-boxes are placed with a gray veil in front of the original page. The user will see the portal in the background and know that an action is required. Furthermore, processes like

the creation of a quote step by step are performed. With those processes there is less failure, because nobody has forgotten a pop-up.

Within light-boxes complex lists can even be included because functions are embedded as the filtering of lists as needed. In addition, error messages or warnings now displayed in the light-box pop-ups and immediately visible.

No problems with pop-up blockers

Internal the most browsers pop-up blockers which hide annoying advertisements and distractions are activated.

Unfortunately, often pop-ups which are necessary for the entry of information are blocked through the blockers. This is no longer the case, because the pop-ups are now represented by the light-boxes.

Sales Quote

Function Document Command Filter

New Save Delete List

General

Shipping

Ship-to Code Ship-to City Ship-to Name Ship-to Contact

Spotsmeyer's Furnishin Miami Mr. Mark McArthur

First entry Previous entry Go to Page Next entry Last entry Set filter Release filter Help Search for Code

Code	Name	Address	State	ZIP Code	City	Contact
ARLINGTON	Selangorian Ltd.	55 Cross Court	GA	37125	Miami	John Fredericksen
EAST ACTON	Selangorian Ltd.	53 East Acton Road	GA	61236	Chicago	Katie McAskill-White

Showing 1 to 2 of 2 entries

Type	No.	Description	Unit of Measure Code	Quantity	Unit Price	Line Amount

Showing 1 to 0 of 0 entries Page Range 7

A light-box is used for choosing the delivery address like shown in the example. Also setting of filters of list internal light-boxes is supported. Especially for long lists those filter functions become very useful.



Managing documents

Manage all the ERP data and documents in a single location! Simply choose any document on a particular item at the web part "Item Card" and upload it directly from NAV into a particular, routable document library.

This enables you to see the item description just next to additional information such as the product images, brochures, data sheets and other useful information you would like to retrieve and know about.

The screenshot shows the 'Edit - Item Card - 1100 - Front Wheel' window. The 'SharePoint Upload' menu is open, displaying options such as 'Upload Specifications' and 'Upload Picture'. The main window contains various tabs like 'General', 'Invoicing', 'Replenishment', etc., and a list of fields for item details.

By clicking on the field "Upload Specifications" you can choose which data you want to upload into the library of the SharePoint.

In a couple of seconds, you will get the file uploaded into the SharePoint document library.

Sites	Type	Name	Modified↓	Item No.
E-Procurement		Front_Wheel-picture	8/2/2010 2:30 PM	1100
CRM & Sales		Front Wheel-Documentation NEW	8/2/2010 2:26 PM	1100
Management		SAPPORO whiteboard, black-Documentation	7/28/2010 4:04 PM	
Human Resources		Tire-Documentation	7/21/2010 6:36 PM	
Travel Expenses		Bicycle-Documentation	7/21/2010 6:32 PM	
Time Reporting		Spokes-Documentation	7/21/2010 6:32 PM	
Training		Touring Bicycle-Documentation	7/21/2010 6:32 PM	
Vacation Planning		Saddle-Documentation	7/9/2010 1:31 PM	
Finance		Frame-Documentation	7/9/2010 1:30 PM	
Projects				
+ Add document				

At this library you can add documents that are not coming from the NAV, but contain additional information from other sources.

It is so easy to provide information in only one place! This way you avoid time consuming search and endless jumping back and forth between information containers.

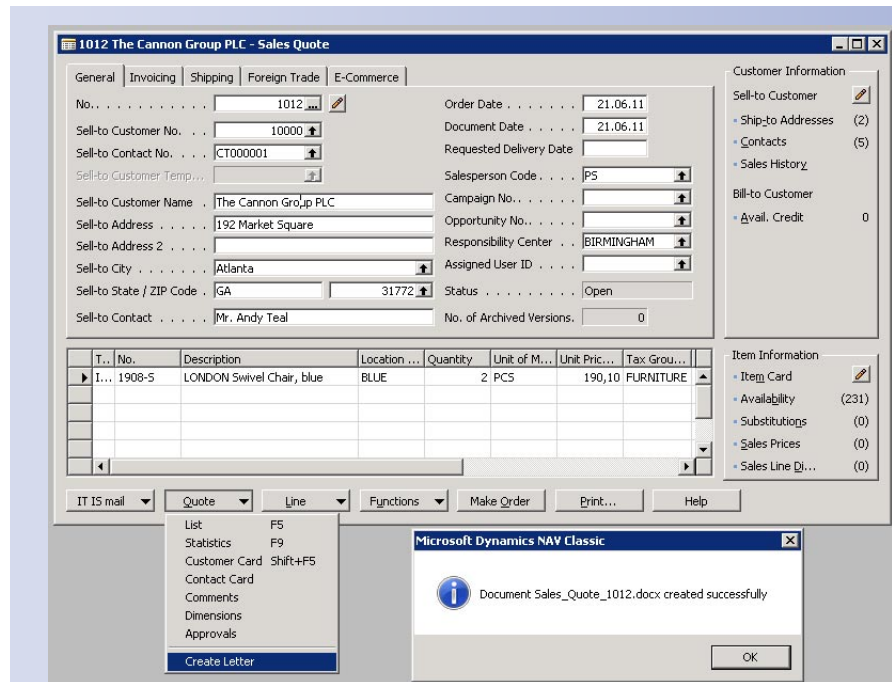


Upload Microsoft Dynamics NAV documents directly to the SharePoint

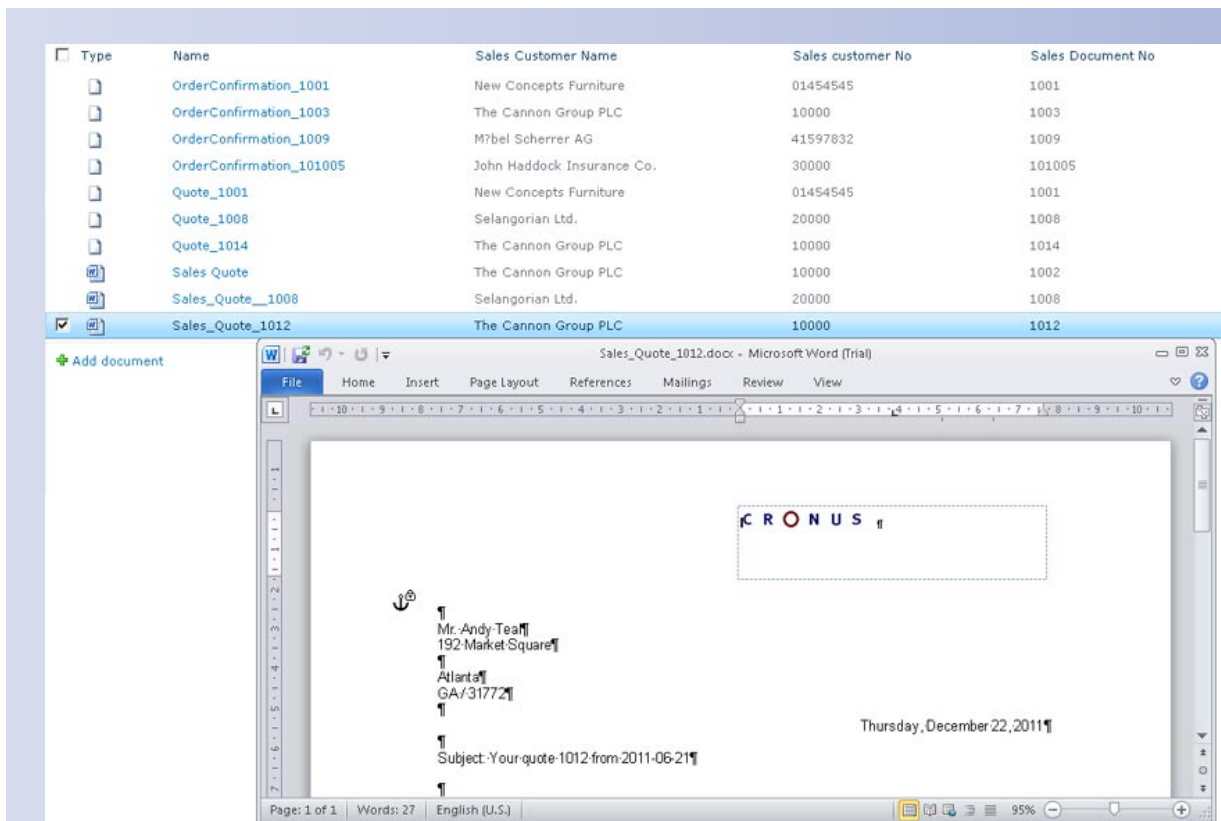
Your sales representatives should find quotes, orders and deliveries as documents as well?

No problem – Choose simply any document of a particular item and upload it directly from Microsoft Dynamics NAV in a SharePoint document library. You can add documents which are not stored in Dynamics NAV, as well.

Thus, you and your colleagues have all the documents for their respective customers at only one place. Therefore, it does not matter whether if there are own correspondence documents or documents from NAV.



Above: Choosing of an quote with creation as Word document. **Below:** Document library with the open document of the quote.





Little Helpers – Big Impact: foresight your ordering system

Never say: “Sorry, this item is out of stock”, again. To avoid telling this to your clients, you should always have a sufficient quantity of an item in stock. You will know when it’s about time to place a new replenishment order as soon as the signal light becomes red. Therefore you can define a reordering quantity as well as a safety threshold by typ-

ing in your required values or just using the new “slider function” to adjust them.

Of course you are able to configure the “slider” in Microsoft Dynamics NAV as you desire. The values set for minimum, maximum and size are easy to adapt and you can pick CSS (cascade style sheets) everywhere to make your style work.

Filter					
No. ▾	Description ▾	Reorder Point	Purchased	Ordered	Quantity on Hand
1000	Bicycle	0.00	0.00	104.00	32.00
1001	Touring Bicycle	0.00	0.00	3.00	0.00
1100	Front Wheel	100.00	0.00	5.00	152.00
1110	Rim	200.00	0.00	0.00	400.00
1120	Spokes	5,000.00	0.00	10.00	10,000.00
1150	Front Hub	100.00	0.00	0.00	200.00
1151	Axle Front Wheel	100.00	0.00	0.00	196.00
1155	Socket Front	100.00	0.00	0.00	200.00
1160	Tire	100.00	0.00	0.00	200.00
1170	Tube	100.00	0.00	0.00	200.00
1200	Back Wheel	100.00	0.00	5.00	152.00
1250	Back Hub	100.00	0.00	0.00	200.00

Showing 1 to 12 of 455 entries

Any time up-to-date: With the visualization as traffic light you see which items are in stock and which items you want to reorder.

Function

Filter

Save

To item card

No.

Description

Reorder Suggest Date

Define your proposal with the slider

Reorder Suggest Minimum

1000

Bicycle

7/22/2010

53

Instead of entering numbers directly you can use the “multi-slider” to select a numeric value here. The new reorder value will be set and your warehouse management is in good shape.



Search global and find quickly

Retrieve additional information within the search from SharePoint search in addition to global Search in Microsoft Dynamics NAV.

This gives you an unique combination of results from Dynamics and SharePoint in just one view. Furthermore we have included the possibility of using various criteria to show the results.

Search results can be shown in groups, alphabetically, by date or numerically. Using the request types for search is fast and comfortable and includes rights management.

“SharePoint search combined with global search in Dynamics NAV - a powerful synergy”

IT IS active 2010 Global Search Web Part

sales



- ☐ Purchaser - Purchase Order Search
- ☒ Purchaser - Vendor Search
- ☐ Salesman - Contact Search
- ☐ Salesman - Customer Search

No.	Name	Relevance
IC1020	Cronus Carboxy Sales	96%

- ☐ Salesman - Invoice Search
- ☐ Salesman - Order Search
- ☒ Salesman - Quote Search

No.	Sell-to Customer No.	Sell-to Customer Name	Document Type	Status	Relevance
1231	20309920	Metatorad Malaysia Sdn Bhd	Quote	Open	45%

More search results

☒ SharePoint Search

CRM & Sales

Welcome to CRM & Sales ! Manage in the Customer Relationship Management the whole customer and contact data. View lists of the customers, contacts, orders, quotes, invoices, opportunities and items

<http://partnersps/crm> - - 9/30/2010 12:27:08 PM

Management - Profit Sales Person

Error - Navision error (20500): The IT IS active User does not exist. Identification fields and values: User ID='NT AUTHORITY\LOCAL SERVICE',User Information="

<http://partnersps/dashboard/SitePages/Profit Sales Person.aspx> - - 9/17/2010 8:36:08 PM

CRM & Sales - Invoice

Error - Communication error (10114): No reply received from Back End System (Time Out).

<http://partnersps/crm/SitePages/Invoice.aspx> - - 10/25/2010 11:51:30 AM

CRM & Sales - Order

At the "Sales Orders" you are able to create, change and delete orders. Additionally you can view a Release (or reopen) open orders or post them. Error - Navision error (20500): The IT IS active User

<http://partnersps/crm/SitePages/Order.aspx> - - 10/19/2010 11:57:14 AM

Do not waste your time for searching needed documents and information by looking on various places. With the IT IS active 2010 global search functionality you receive all the information on one page.



Contact list meets calendar

Never miss a sales appointment again. With IT IS active 2010 you will get an overview of your calendar items next to your customers list. Appointments from Microsoft Dynamics NAV can be connected fast, easy and structured with contacts from the customer list.

Documents of all types, that are required for an appointment can be integrated additionally as usual and if you feel burdened of using the contact list view just switch to the calendar mode having an overview with task bar and to-do's like in Microsoft Outlook 2010.

View - To-do List - PS Peter Sadow

⚡ Actions ▾ 📅 Related Information ▾

● Create To-do

Process

To-do List ▾ Type

Sorting: No. ▾ A Z ↓ Filter: Organizer, Salesperson Attendee • No • PS • 01/01/10

C...	Starting Date	Type	Description	Priority	Status	Organizer ...
<input type="checkbox"/>	5/7/2010	Phone Call	Call John Haddock	Normal	Not Started	TD000051
<input type="checkbox"/>	7/23/2010	Phone Call	Call contact	Normal	Not Started	TD000053
<input type="checkbox"/>	7/23/2010	Phone Call	Customer asked for information.	Normal	Not Started	TD000055
<input type="checkbox"/>	8/9/2010	Meeting	First contact	Normal	Not Started	TD000061
<input type="checkbox"/>	8/11/2010	Phone Call	Call for feedback	Normal	Not Started	TD000063
<input checked="" type="checkbox"/>	7/1/2010		Call Guildford	Normal	Not Started	TD000066

You can create tasks in Microsoft Dynamics NAV and updates are automatically adopted.

Contact List

Filter

No.	Name	Address	City
CT000001	The Cannon Group PLC	192 Market Square	Atlanta
CT000002	Selangorian Ltd.	153 Thomas Drive	Chicago
CT000003	John Haddock Insurance Co.	10 High Tower Green	Miami
CT000004	Deerfield Graphics Company	10 Deerfield Road	Atlanta
CT000005	Guildford Water Department	25 Water Way	Atlanta

Showing 1 to 9 of 424 entries Page Range 9 ▾

Calendar

☐ Title Start Time End Time NAV Contact ▾

Call Guildford 7/1/2010 12:00 AM 7/1/2010 12:00 AM CT000005

2010 August, 2010

Sunday	Monday	Tuesday	Wednesday	Thursday	Friday	Saturday
1	2	3	4	5	6	7
8	9 2:00 pm - 2:30 pm First contact	10 7:00 am - 9:00 am Asked to call back	11 3:00 pm - 4:00 pm Call for feedback	12	13	14
15	16 8:00 am - 9:00 am Give more informat	17	18	19	20	21
22	23 3:00 pm - 4:00 pm Call to get more inf	24	25	26	27	28
29	30	31	1	2	3	4

Libraries: Site Pages, Shared Documents, NAV Documents, Opportunity Report

Lists: Calendar

As soon as a contact from the customer list is selected the tasks for fulfilling your customers wishes are displayed in a calendar view.

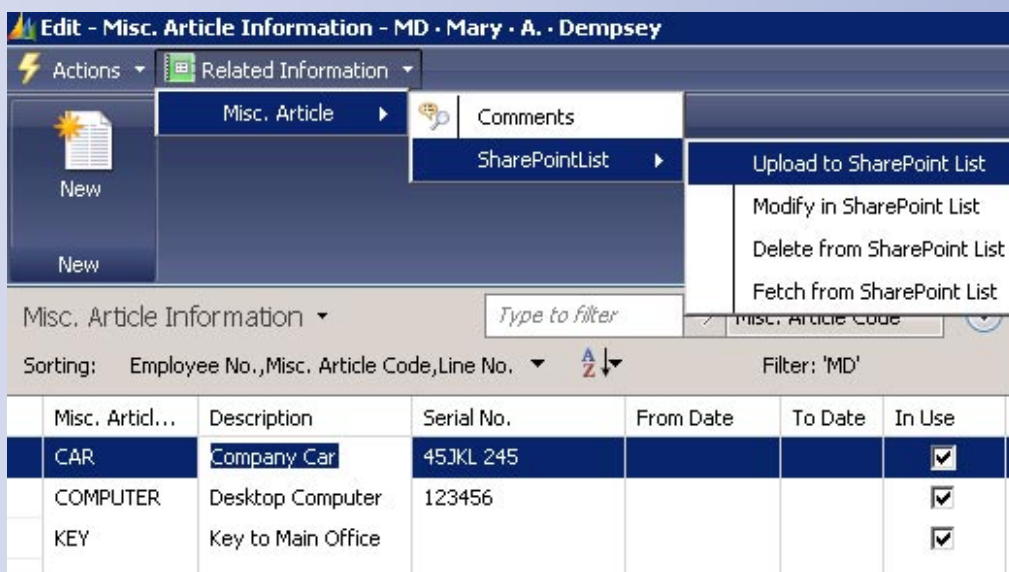


Using workflows with Microsoft Dynamics NAV and SharePoint

Are you tired of long-lasting procedures with lack of clarity? With our following example, you will simplify the approval confirmation of benefits for employees by generating workflows. Take additional advantage of traceable and transparent structures. There will be no prospective time consuming steps for decision making anymore. An approval process that has to be achieved by involved employees is just enough.

If you require additional information concerning the procedure, it is also possible to attach files such as receipts or invoices - no matter what type of documents.

Our detailed example shows how to upload data from Microsoft Dynamics NAV by creating an entry in the Human Resource part of the ERP solution. This entry is ready to use in SharePoint step by step.



In NAV you fill out all the useful and needed fields. All those fields are for display in the application by uploading the form to SharePoint list.

Title	Employee ID	Misc Article Code	Serial No	From Date	To Date	Car Approval
Company Car NEW	LM	CAR	3XD R7D			Approved
Key to Main Office NEW	AH	KEY				In Progress
Desktop Computer NEW	AH	COMPUTER	123456			In Progress
Company Car NEW	MD	CAR	45JKL 245			In Progress

Add new

- View Item
- Edit Item
- Compliance Details
- Workflows
- Manage Permissions
- Delete Item

The new list entry is automatically starting a workflow for approval and an e-mail will be sent out for informing involved employees. It is also possible to attach necessary files concerning the procedure, e.g. receipts or invoices.



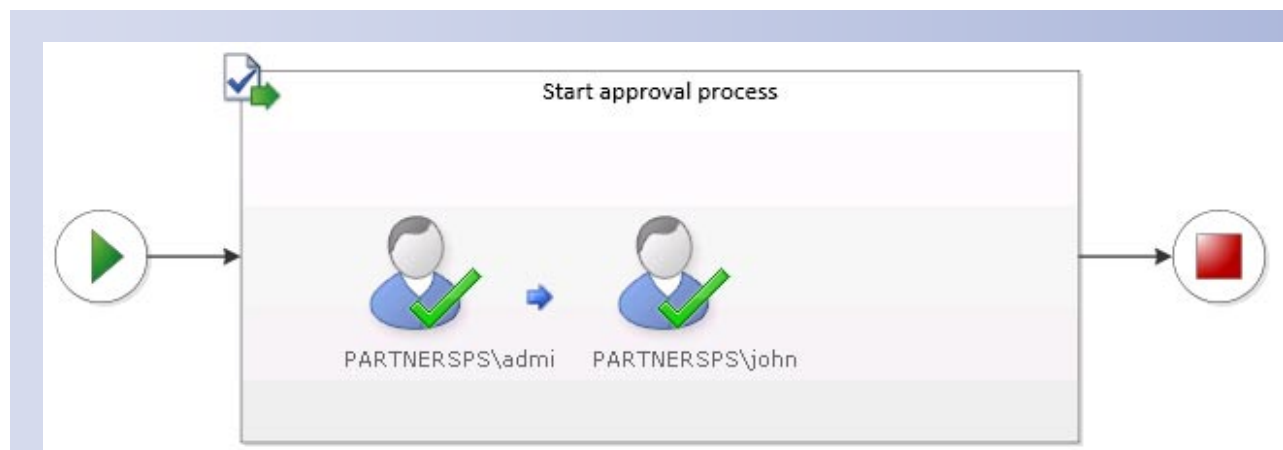
Automatically notification via e-mail for a quick approval

Save a lot of time by being informed about an approval process during the whole workflow.

A new list-entry starts a approval process automatically and an e-mail is sent to all the involved person automatically, also.

The existing workflow can be updated with new information as well.

As soon as the approval is done an other e-mail process is triggered that the concerned parties are informed about the news. In this manner you are every time up-to-date and an approval process is reliable finished in a short term.



Here you see the Workflow visualization that appears in Microsoft's SharePoint Server. In this case the two displayed users should approve the tasks that are visible in their task list.

	Please approve Company Car	PARTNERSPS\john	Completed	(2)	Normal
	Please approve Key to Main Office	PARTNERSPS\administrator	Not Started	(2)	Normal
	Please approve Desktop Computer	PARTNERSPS\administrator	Not Started	(2)	Normal

Once both users gave their approval the procedure is confirmed and the associated actions will be taken.



Do more the way you want to:

More People work directly or indirectly with Microsoft and the web Front End via IT IS active 2010 and associated products.

More requirements of enterprises and business processes fulfilled by new platforms

More user friendly solutions leads to faster insight, better communication and increased productivity

More flexibility with Internet and Cloud based computing

More usability through easy to handle web parts and applications using the latest technology

More room for innovation and upcoming solutions

“anywhere, at any time, any web device”

Mobile solutions available:

An IT IS active 2010 for NAV portal can also be used with a tablet like the iPad. But what is it good for?

Here is the answer: A portal solution for tablet devices is very useful for sales people on the road. It is embedded in a fully featured intranet platform but will consist of pages well formatted for tablet computers or phones.

This works for a big customer in the U.S.A. today: With their iPad solution, sales people are able to create new orders while they visit the customer. They also can have a look into older orders together with the customer.

As usual, with IT IS active 2010 SP2 the data is immediately available in Microsoft Dynamics NAV. For example, the new order will immediately be sent to the production department or to the warehouse for delivery. Thus the sales person can inform the customer that the items just ordered are on their way already.

With the new sales portal the output for quotes and orders will increase. As soon as the appointment is over, the sales people can prepare for the next customer and see if there are any changes in the contact.



We recommend using our IT IS active add-on for tablet computers or phones, since the special adaptation for the touch interface enhances the usability by a large extent.



Web services communication supported

Web services communication

IT IS active 2010 SP2 supports the communication between the backend and frontend with the web services capability in Microsoft Dynamics NAV. You will require a SQL database to use the NAV web services. With a NAV native database, the communication will be through the NAS (Navision Application Server).

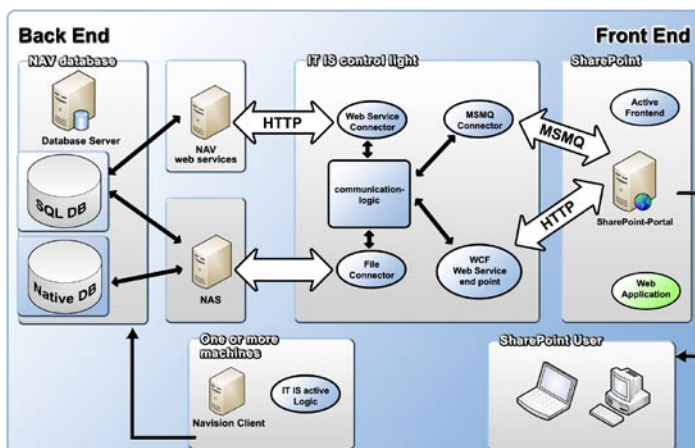
With the IT IS control light included in SP2 now, you can decide whether you want to use the web services or NAS for the communication with a SQL database.

The communication is divided into three stages. The data from NAV is sent from the backend over IT IS control light to the SharePoint Portal. This allows you to decide whether to communicate to your SharePoint portal on MSMQ (Microsoft Message Queue) or on HTTP. Here different endpoints in IT IS control light are addressed. The message queues are sent to the MSMQ connector and the HTTP communication is working via WCF web services (Windows Communication Foundation). The communication logic contained in IT IS control light translates the data from the NAS to pure HTTP.

Since you do not need to purchase additional NAS instances you will probably save a lot of money with the NAV web services. Especially for large portals it could make sense to decide for the communication over the web services.

“With web services you could save huge amounts at licensing costs for the NAS instances”

Architecture overview for IT IS active 2010 SP2 with the embedded IT IS control light.





Secure and scalable architecture

The work sharing of the three layer architecture makes possible a scalable and dependable system with combined data and document management. With an IT IS active 2010 standard installation the communication channels are all fixed to a certain address. The Navision Application Server is listening to a configured message queue to receive requests from the Front End. These requests are then processed through the IT IS active 2010 logic to the connected company. Therefore the number of addressable companies is limited to the number of NAS services that are connected to the Dynamics NAV database.

“More efficient usability with the separately available IT IS control”

IT IS control is an application to dynamically manage the communication between the Front End and Back End of IT IS active 2010 using the least amount of resources. By analyzing the incoming requests from the Front End, IT IS control determines the addressed company and routes the request to its destination. It chooses an appropriate Navision Application Server from a pre-configured NAS pool and starts or stops NAS instances on the fly, according to the available licenses.

After the appropriate NAS is started, the request is passed over via the file system and then processed by the IT IS active 2010 logic. The Back End reply will then be routed back to the Front End through message queues and is rendered for visualization in SharePoint respectively DotNetNuke by the IT IS active 2010 Front End. The NAS instance started is now free to connect to any other company in the according Microsoft Dynamics NAV environment.

The usage of the optional IT IS control vastly improves, performance, reliability and safes licensing cost by leveraging resources.



Keep in mind that...

...with IT IS active 2010 you will get the worldwide first, now most experienced and useful solution for integrating Microsoft Dynamics NAV in Microsoft SharePoint. New ribbon based web parts for better usability, data exchange between NAV and SharePoint lists and a document management with SharePoint for all types of documents are subjects you don't want to miss.

An user optimized, configurable web-based interface gets you results without programming. Make your budget shine with significant cost savings though and efficient licensing model and participate with the vast flexibility of todays internet and cloud-based computing. These technologies are completing the profile of our powerful business solution and let your people team up.

Last not least

This brochure is just a peak of the large scaled world of IT IS active 2010 and it's vast potential for your business solution. If you ever have a question concerning our product please do not hesitate to contact us.

“We will help realizing your vision.”



Software evolution: Navision Employee Portal - basically our first version - now evolved into IT IS active 2010 Service Pack 2

Please find in the table below a comparison between Navision Employee Portal (NEP) and IT IS activigence 2007 and NAV 7 and explore the blazing new features that comes with IT IS active 2010 SP2.

Functions	NEP	IT IS activigence 2007	Microsoft Dynamics NAV2013	IT IS active 2010 SP2
Portal	Intranet only	Intranet / Extranet (Internet)	Intranet / Extranet (Internet)	Intranet / Extranet (Internet)
Front-End	SharePoint 2003 and SharePoint Server 2007	SharePoint Server 2007 and WSS 3 with AJAX, SharePoint 2003 only with IT IS active	SharePoint 2010 and SharePoint Foundation	SharePoint 2010 and SharePoint Foundation, SharePoint Server 2007 and WSS 3 with AJAX
Web Part	3 +1 Web Parts	1 + 1 + 2 Web Parts	Many	1 + 1 + 2 Web Parts + 2 Matrix Web Parts
Navigation / Filters	No / No	Yes / Yes	No / Yes	Yes / Yes field based filtering on the beginning of lists
Integration in SharePoint search with tree view	No	No	No	Yes
Linking	Only within page	Even cross page with data handover	Only within page	Cross page with data handover, documents
Reports generation	No	Yes	limited	Yes
Document uploads	No	PDF only	No	All types of documents
New ribbon design and AJAX controls	No	No	Yes	Yes
Light-box pop-ups internal the same browser window	No	No	No	Yes



Functions	NEP	IT IS activigence 2007	Microsoft Dynamics NAV2013	IT IS active 2010 SP2
Web Services for Apps	No	Yes	Yes	Multiple
Communication via Windows Communication Foundation (WCF)	No	No	Yes	Yes
optional communication through Web services or MSMQ	No	No	No	Yes
SharePoint page management	No	Yes	No	improved
Automatic page creation in SharePoint	No	No	No	Yes
Connection between IT IS active Web Parts and SharePoint lists	No	No	No	Yes
Data import and export	No / No	Yes / Yes	No / No	Yes / Yes
Automatic creation of documents in SharePoint libraries	No	No	No	Yes
Automatic update of values SharePoint <> NAV	No	No	No	Yes
Create SharePoint list entries from NAV	No	No	No	Yes
Tabs / Editing in Lists	No / No	Yes / Yes	No / No	Yes / Yes
Own columns (ERP fields) in SharePoint lists	No	No	No	Yes
Integrated performance measurement tool	No	No	No	Yes



Information Brochure

Now learn about the most
versatile and experienced solution for
Microsoft Dynamics NAV and SharePoint

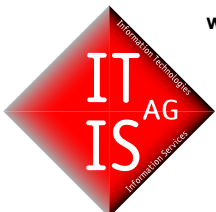


You will get IT IS active 2010 through your local qualified Microsoft Dynamics ERP dealership.

Please ask your Microsoft Dynamics Partner to use the tremendous advantages of this ground breaking product.

Please do not hesitate to contact us
via e-mail under contact@itis.de or just call us by phone.

Your IT IS active 2010 Dealer



we create
worlds on the
web

IT IS AG
P.O. Box 3141
84037 Landshut

Germany

+49 8703 9069 0
kontakt@itis.de

IT IS US
Tower 1660, Suite 906
1660 South Albion Street
Denver, Colorado 80222
U.S.A.

+1 720 381 1380
contact@itis.us

IT IS IN
No. 19, 2nd Floor, K.N. Govinda Reddy Layout,
Near Arekere Mico Lt., Bannerghatta Main Road
Bangalore - 560076, Karnataka
India

+91 804 153 6121
contact@itis.de

www.itis.de

All product names are trade names or trademarks of their respective owners. Restrictions may apply, offer can be turned void, general terms & conditions of IT IS AG applies, change of product & technology may occur without notice.