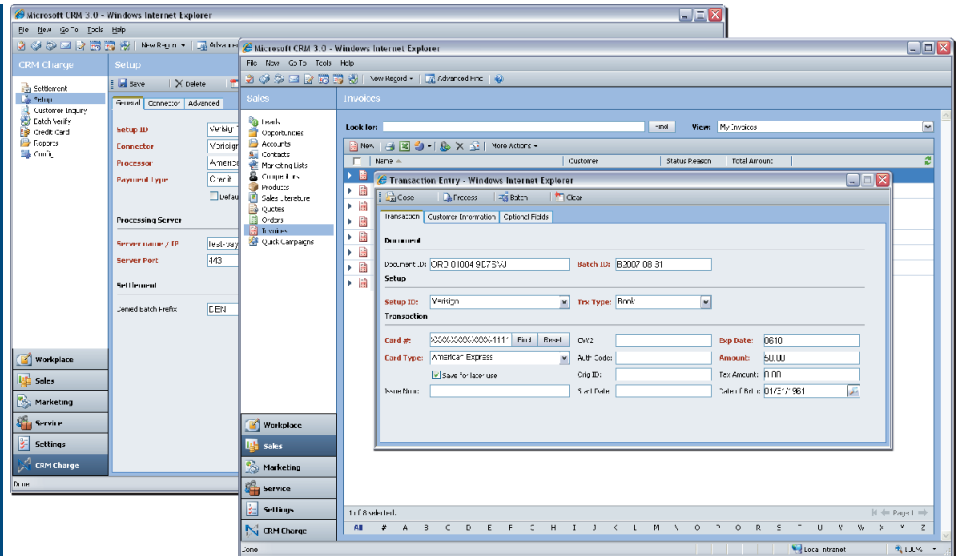


# CRM CHARGE

*Real-time Electronic Payment Processing for Superior Customer Service*

CRM Charge allows users to process credit cards and enter electronic transactions directly from their Microsoft Dynamics CRM sales modules and have those payments verified in real-time without leaving the CRM environment. Processing payments and transactions through its web-based design is fast, secure, and reliable.



## Essential Payments Management

CRM Charge connects your credit card processing with your Microsoft Dynamics CRM solution for secure, efficient management of electronic payments. CRM Charge increases the accessibility and visibility of order and payment information across company-wide departments so you can efficiently capture customer information and better predict and satisfy customer demand. Faster approval times and automatic data transfer enhance your CRM capabilities and ensure payment, order, and customer information is accurate and up-to-date.

## Fast, Efficient ePayment Processing

Receive fast, accurate Internet-based verification of electronic payments in seconds and efficiently manage your sales orders and invoices. CRM Charge creates a fluid electronic payment process providing the key credit card functionality for your CRM solution for smooth, accurate electronic payment handling of each transaction.

## Enhanced Order Processing

Shorten the order processing cycle and increase responsiveness to customer demands by extending access of the payment function to key personnel. CRM Charge equips sales and customer service personnel with the ability to pre-authorize and charge electronic payments.

## Outstanding Customer Service

With detailed and complete customer information available to all departments, you can immediately retrieve and utilize reports customer insights from detailed order and payment information. Supply all members of your organization with the information necessary to deliver consistent customer service and ensure a high level of customer satisfaction.

## Improve The Way You Do Business

Start verifying credit card information from Microsoft Dynamics CRM today. Tight integration with multiple payment gateways, processors, and back office environments delivers flexible, reliable credit card processing from your first transaction on!

## PRODUCT FEATURES:

- ✓ Extend the capabilities of your CRM solution
- ✓ Verifies credit card payments in real-time directly from Microsoft Dynamics CRM
- ✓ Allow sales and customer service personnel to pre-authorize and charge electronic payments
- ✓ Increase organization-wide access and visibility to vital order and payment information
- ✓ Saves card transactions in a batch for later verification
- ✓ Enables you to query and generate a list of credit card transactions reports
- ✓ Supports multiple payment gateways and processors
- ✓ And more!

### Get Up-to-Speed with Your E-Payment Processing

With the rapid-fire pace of e-business, you can't afford to be held up by slow transaction processing. Disjointed credit card processes, disconnected systems, and error-prone manual data entry impede your pace, and your business. Speed and simplify your payment processing with solutions from Nodus Technologies.

In today's business environment, time is money. To keep up with the pace of plastic, you need to eliminate the invisible barriers that slow you down. Whether you're accepting mail orders, telephone orders, e-commerce orders, online bill payments, processing and approving payments from a credit card terminal, or wrapping up reconciliation, poor integration and loose connectivity can be unsurpassable.

Nodus Technologies' credit card processing solutions, Credit Card Advantage, eStore Solution Stack, and ePay Advantage integrate with Microsoft Dynamics GP to ensure smooth, fast, and accurate data transfer. The superior integration and flexibility of these solutions enable you to integrate web orders and electronic payments with ease! CRM Charge extends these capabilities for Microsoft Dynamics CRM users.

Contact Nodus today to determine how our innovative solutions can help your company reach its full potential by integrating front and back office business applications and improving your e-payment processing!

## CRM CHARGE

### Enhance Microsoft Dynamics CRM

CRM Charge expands the functionality of Microsoft CRM by allowing sales and customer service personnel to pre-authorize and charge credit cards and accept electronic payments. Extending access of the payment function to key personnel shortens the sales order processing cycle and increases responsiveness to customer needs. CRM Charge ensures all departments have access to order and payment data.

\* CRM Charge does not provide integration with Microsoft Dynamics GP. Integration requires additional software modules.

### MINIMUM SYSTEM REQUIREMENTS

- Microsoft® Windows 2000, Windows XP, or Windows NT 4.0
- Microsoft CRM 2.0, Microsoft CRM 3.0
- .NET 2.0
- SQL Server 2005
- SQL Reporting Services
- SQL Server Service Pack 2  
(Must be installed after installing SQL Reporting Services)
- Internet Access
- Microsoft Internet Explorer

### PARTNERS

- |             |               |               |
|-------------|---------------|---------------|
| • Microsoft | • Paymentech  | • Wells Fargo |
| • VeriSign  | • CyberSource | • Moneris     |
| • USA ePay  | • VeriCheck   | • Comdata     |

### ABOUT NODUS TECHNOLOGIES, INC.

Nodus Technologies sets the standard for electronic payment processing with revolutionary solutions. Based on a collaborative framework, Nodus' applications are designed to integrate with Microsoft Dynamics accounting systems as well as other accounting packages, ERP's, Retail, E-Commerce, B2B portals, and CRM solutions.

Downloadable evaluation copies of our solutions are available from our web site and are fully functional in The World Online company. For more information about Nodus Technologies' products and services, visit [www.nodus.com](http://www.nodus.com) or contact [sales@nodus.com](mailto:sales@nodus.com).

250 West First Street, Suite 302 - Claremont, CA 91711  
Phone: 909.482.4701 - Fax: 909.482.4705

