

How do you capitalize on your assets to increase your bottom line?



Hofinsoft can help you:

- *Increase productivity and profitability by managing your assets across the globe*
- *360° Visibility, Better Availability, Reliability and Maintainability of your assets*
- *Maximizing Capacity Utilization*
- *Reducing Maintenance cycle times*
- *Improve crews and resources planning*
- *Reduce your maintenance cost*

CONTACT US TODAY:

HOFINSOFT, Inc.
(A wholly owned subsidiary)
34650 US Highway 19 North,
Suite 301
Palm Harbor, FL 34684 (USA)
Tel: 1 800-293 4717
Fax: (727) 239-7575

Hofinsoft Technologies Pvt. Ltd.
G R Complex Annexe, 3rd Floor
408/19, Anna Salai, Nandanam,
Chennai, Tamil Nadu - 600 035 (India)
Tel: +91 44 2432 9524 / 25 / 26
Fax: +91-44-2432 9529
website: www.hofinsoft.com



Product Summary

The health of the equipments, machines, parts, fleets, tools, and assets has a considerable impact on the productivity & efficiency of your production units, plants, crews, customer service and consequently determines the profitability of your organization.

*Microsoft Dynamics AX Enterprise Asset Management provides integrated view of planning and maintenance of enterprise assets and equipments for a number of asset intensive industries, including manufacturing, oil & gas, petrochemical, energy and power, life sciences, transportation and fleets, constructions and telecommunication. This enables tight integration of Dynamics AX EAM functionalities with core modules: **AX Finance, CRM, Trade & Logistics, Production and HR.***

Dynamics AX EAM uses highly effective business analytics, on-line queries and more than 150 reports built in for quicker decision-making process thus providing better Availability, Reliability and Maintainability (ARM) of all critical assets, equipments, parts, crews and machine tools.

Dynamics AX EAM offers real-time information that is crucial to productivity and efficiency of your assets, machines, tools, fleets and timely allocation of crews for successful planning and maintenance of these valuable machines, machine parts and any items that require planning and repair works.

CONTACT US TODAY:

HOFINSOFT, Inc.
(A wholly owned subsidiary)
34650 US Highway 19 North,
Suite 301
Palm Harbor, FL 34684 (USA)
Tel: 1 800-293 4717
Fax: (727) 239-7575

Hofinsoft Technologies Pvt. Ltd.
G R Complex Annexe, 3rd Floor
408/19, Anna Salai, Nandanam,
Chennai, Tamil Nadu - 600 035 (India)
Tel: +91 44 2432 9524 / 25 / 26
Fax: +91-44-2432 9529
website: www.hofinsoft.com

Dynamics Ax EAM Functions Overview

Key Functions Overview:

- ❖ Multi-levels tracking of assets, equipments, machines, machine parts, crews and tools.
- ❖ Detailed equipments and assets history
- ❖ Planned Maintenance Schedules
- ❖ Opportunity Maintenance
- ❖ Work order scheduling and work flow process
- ❖ Supervisor's workbench and authorization
- ❖ Automatic alerts and email notifications to crews and managers
- ❖ Corrective Repairs & Maintenance
- ❖ Breakdown Maintenance
- ❖ Maintenance costs: Actual vs Budgeted costs tracking
- ❖ Resources allocation and crews management
- ❖ Condition Monitoring/Predictive Maintenance
- ❖ Shutdown/Turnaround Maintenance
- ❖ Safety & Permit
- ❖ Warranty Interface
- ❖ Business Intelligence & reporting interface with more than 150 reports
- ❖ Tightly integrated with Dynamics AX Finance, Trade and Logistics

Key Benefits:

- ✓ *Reduce asset maintenance and operating cost*
- ✓ *Properly maintained machines minimizes downtime*
- ✓ *Production cost decreases*
- ✓ *Continuous improvement in commonly performed work.*
- ✓ *Improved equipment life*
- ✓ *Enhanced equipment availability and reliability*
- ✓ *Improved employee work efficiency*
- ✓ *Consistent operation of machinery improves product quality*
- ✓ *Improve reporting and analysis capabilities.*
- ✓ *Comply with Health and Safety Regulations.*
- ✓ *Improve Business Planning and make informed decisions.*
- ✓ *Improve operational efficiencies.*
- ✓ *Increase productivity and profitability.*
- ✓ *Improve strategic and business planning; Analyze records, needs and patterns.*
- ✓ *Identify trends and highlight potential problem*



CONTACT US TODAY:

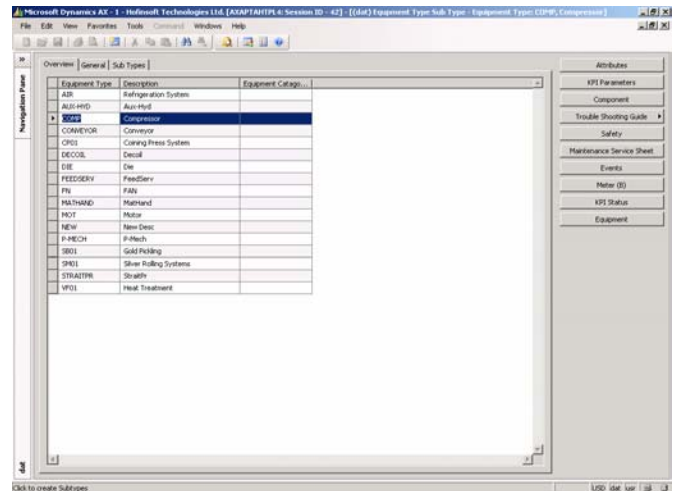
HOFINSOFT, Inc.
(A wholly owned subsidiary)
34650 US Highway 19 North,
Suite 301
Palm Harbor, FL 34684 (USA)
Tel: 1 800-293 4717
Fax: (727) 239-7575

Hofinsoft Technologies Pvt. Ltd.
G R Complex Annexe, 3rd Floor
408/19, Anna Salai, Nandanam,
Chennai, Tamil Nadu - 600 035 (India)
Tel: +91 44 2432 9524 / 25 / 26
Fax: +91-44-2432 9529
website: www.hofinsoft.com

Dynamics Ax EAM Product Editions

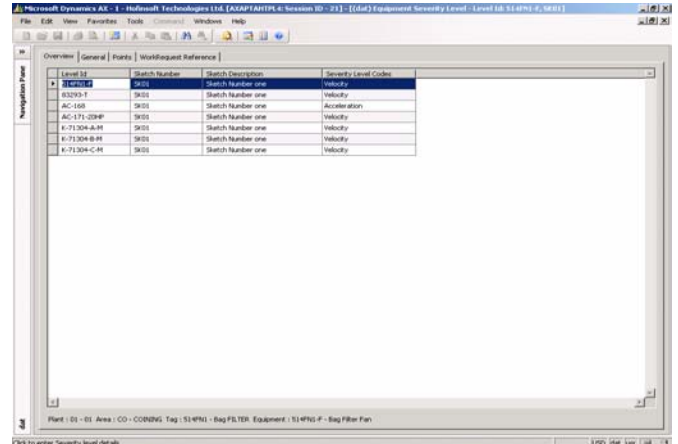
Standard Edition

- **ASSETS-EQUIPMENTS**
- **PREVENTIVE MAINTENANCE**
- **OPPORTUNITY MAINTENANCE**
- **CORRECTIVE REPAIRS**
- **BREAKDOWN MAINTENANCE**
- **SAFETY & PERMITS**
- **QUERIES**



Enterprise Edition

- **STANDARD EDITION PLUS**
- **CONDITIONING MONITORING /PREDICTIVE MAINTENANCE**
- **SHUTDOWN -TURNAROUND MAINTENANCE**
- **QUERIES**
- **ANALYTICS & REPORTS**



CONTACT US TODAY:

HOFINSOFT, Inc.
(A wholly owned subsidiary)
34650 US Highway 19 North,
Suite 301
Palm Harbor, FL 34684 (USA)
Tel: 1 800-293 4717
Fax: (727) 239-7575

Hofinsoft Technologies Pvt. Ltd.
G R Complex Annexe, 3rd Floor
408/19, Anna Salai, Nandanam,
Chennai, Tamil Nadu - 600 035 (India)
Tel: +91 44 2432 9524 / 25 / 26
Fax: +91-44-2432 9529
website: www.hofinsoft.com

Product Features

Assets- Equipments Definitions	<ul style="list-style-type: none"> • Attaches notes, drawings or any other document to assets, equipments, parts item • Associates the relationship of each equipment to the asset details for expense capitalization, depreciation etc • Specifies the cost center and accounting details to which maintenance expenses are to be posted • Records details of manufacturer, purchase, warranty, MTBF, history and information for each equipment • Ability to define parameters of an equipment for condition monitoring • Tracks associated costs, histories, and failures of a serialized piece of equipment as it moves throughout a plant or facility • Builds failure code hierarchies to record equipment problems for analysis • Performs trending and defect analysis through conditions monitoring, by set measurement points • Assigns stores, repair shops as location record to facilitate continual tracking • Provision to copy equipment and related details to multiple new equipment • User definable levels in equipments, assets and item categories definition • User definable attributes as templates for capturing Technical & Process parameters for an Equipment type + Sub type combination • Queries to view availability of Interchangeable Equipment (similar Equipment) • Warranty details for action on Equipment under warranty, claims etc • Monitors cost spent on equipments, parts, crews etc. • Supports limited number of equipment locations for grouping equipment based on functional or planning attributes.
Equipments: Bill of Materials	<ul style="list-style-type: none"> • Assets, Equipment, machinery, tools can be broken down into sub-assemblies which can be further broken down into discrete parts for maintenance purposes • Features to track specific part across all assets, equipments, machinery where it is used • Features to capture the criticality of equipments, parts etc. • Definition of spares for an equipment to provide effective monitoring / procurement / availability of spares and interchangeability details. • Provision to build assets, equipments hierarchy using parent – child relationships.
Trouble shooting guide	<ul style="list-style-type: none"> • Allows creation of trouble shooting guides by associating set of problems, their causes and the corresponding solutions to failures • Easy user interface of defect codes and repair codes from the past experience • Maintains details of the each asset, equipment problems faced by maintenance personnel across the organizations and possible solutions to such problems



CONTACT US TODAY:

HOFINSOFT, Inc.
(A wholly owned subsidiary)
34650 US Highway 19 North,
Suite 301
Palm Harbor, FL 34684 (USA)
Tel: 1 800-293 4717
Fax: (727) 239-7575

Hofinsoft Technologies Pvt. Ltd.
G R Complex Annexe, 3rd Floor
408/19, Anna Salai, Nandanam,
Chennai, Tamil Nadu - 600 035 (India)
Tel: +91 44 2432 9524 / 25 / 26
Fax: +91-44-2432 9529
website: www.hofinsoft.com

Product Features

Resources Allocation	<ul style="list-style-type: none"> • Easy user interface to define resources like employees / tools / items and others. • Stores and retrieves technical scope of work for attending different types of jobs on the equipment • Stores estimates of the spares, consumables, man days and skills required for various jobs • Provision to allocate standard costs to each type of resource for cost tracking • Easy user interface to define types of attendance for employees like normal time, over time etc • Provision to change costs of resource at work order level without affecting the standard cost
Planned Maintenance	<ul style="list-style-type: none"> • Defining activities to be carried out and updates of observation. • Resource planning and allocation of crews. • Definition of job to equipment along with details of frequency, expiry etc. to follow-up & planning. • Schedule definition either as Hour based or periodicity based. • Matching multi -function jobs of Planned Maintenance for same Tag number. • Base shift – facility to shift base date globally for all equipments in the event of major stoppage/turnarounds by which all base dates are pushed for the number of days specified. • Histograms to view Load, resources requirement, Planned Vs actual for PM jobs. • Tracks cost for Job based on Crew, Material & Special tools usage. • View status of material required for executing job, other jobs for the same equipment during authorization. • Prepare lubrication templates and plan lubrication schedule.
Condition Monitoring	<ul style="list-style-type: none"> • Work orders generated when measurements fall outside warning limits and tolerances are actually exceeded. • Alerts can be attached / sent when control limits and tolerance are exceeded • Generation of schedules for equipments configured for condition monitoring • Sketch capturing as an image and definition of points. • Performance Data sheet – Catering to Temperature, Thickness measurement • Equipment Severity – Catering to Spike Energy, Vibration & Displacement • Shock Pulse - Catering to Shock pulse details • Assets, Equipment and machines history with vibration data • Defining Jobs, Schedule & Execute • Generation of Predictive maintenance report , History & other analysis reports • Graphs for Trending
Opportunity Maintenance	<ul style="list-style-type: none"> • Create, review & authorize jobs which cannot be taken-up immediately but can be taken up at an opportune time along with crew, material & special tools requirement. • Access to views other jobs of Planned Maintenance / Work request for the same asset, equipment while authorization for effective use of stoppage.



CONTACT US TODAY:

HOFINSOFT, Inc.
(A wholly owned subsidiary)
34650 US Highway 19 North,
Suite 301
Palm Harbor, FL 34684 (USA)
Tel: 1 800-293 4717
Fax: (727) 239-7575

Hofinsoft Technologies Pvt. Ltd.
G R Complex Annexe, 3rd Floor
408/19, Anna Salai, Nandanam,
Chennai, Tamil Nadu - 600 035 (India)
Tel: +91 44 2432 9524 / 25 / 26
Fax: +91-44-2432 9529
website: www.hofinsoft.com

Product Features

Turnaround	<ul style="list-style-type: none"> • Creates standard codified activities • Creates repository of jobs Equipment wise to define Crew, Material & Special tools requirement • Includes jobs from other modules to create standard job list in addition to jobs from the standard repository. • Plans, monitors & executes jobs during actual Turnaround • Auto generation of maintenance work order's for shutdown jobs from shutdown register
Run-log	<ul style="list-style-type: none"> • Easy user interface to start / shut globally in status change run-logs • Query to view Reliability Run/Shut hours for all/any Equipment • Query to view Run/Shut/PM hours for any/all Equipment • Query based on Run-log to view availability of Equipment
Work order management	<ul style="list-style-type: none"> • Easy user interface to create work orders for corrective / preventive / breakdown / overhaul maintenance • Generate orders for reconditioning or repair works • Easy user interface to generate blanket work orders for carrying out work on a number of equipment in a group (for example, replacement of tube lights and oil top-up in lubricating units) • Easy user interface for automatic routing of requests to concerned maintenance planners for approval • Option to convert maintenance requests to work orders automatically on approval • User interface to monitor progress of work requests • User interface to close requests on satisfactory completion of maintenance work • Easy user interface to specify failure details in terms of problems and their causes • User interface to specify tasks to be performed in a work order along with material and resource requirements • Provision to copy tasks to the work order from the steps of Maintenance service sheet • Easy user interface to copy tasks with material and resource requirements to the work order from standard procedures • User interface to attach notes, equipment drawings / documents, standard operating guidelines for each task in a work order • Easy user interface to look-up spares from spares structure of equipment • User interface to define non-standard parts on-the-fly while specifying the task requirements in a work order • User-defined categorization for work orders • Capture accounting and cost centre details for posting to accounting heads • Set priority to the work order for scheduling
Maintenance Planning Horizon	<ul style="list-style-type: none"> • Maintenance periods can be user defined and managed • Preventive maintenance details are automatically generated during period opening once maintenance periods are defined. • Work Orders scheduled can be reviewed and checked.

CONTACT US TODAY:



HOFINSOFT, Inc.
(A wholly owned subsidiary)
34650 US Highway 19 North,
Suite 301
Palm Harbor, FL 34684 (USA)
Tel: 1 800-293 4717
Fax: (727) 239-7575

Hofinsoft Technologies Pvt. Ltd.
G R Complex Annexe, 3rd Floor
408/19, Anna Salai, Nandanam,
Chennai, Tamil Nadu - 600 035 (India)
Tel: +91 44 2432 9524 / 25 / 26
Fax: +91-44-2432 9529
website: www.hofinsoft.com

Product Features

Work Execution	<ul style="list-style-type: none"> • Assigns employees/ resources to carry out each task on one or more dates • Captures actual time spent by each resource on maintenance work • User interface to capture the actual time spent by employee(i.e. timesheet) on work order • User interface to specify break up for each time type i.e. normal hours or overtime • Specifies consumption details of items issued from inventory through section stores to facilitate return of balance items • Tracks issues, returns, receipts (including serial no details of items) for a work order • Specifies reasons for delay in execution of work • Provision to capture details of down hours, root cause and closing comments of the supervisor/planner. • Selectively flag off tasks as completed during the course of work order execution • Creating of work order history on closing of work order
Analysis and Reviews	<ul style="list-style-type: none"> • Analyzes maintenance history for a location, equipment / equipment group, cost centre for a fiscal year or calendar year. • Graphically review the cost (total cost, resource or material costs) trend for equipment across various time periods • Tracks maintenance costs for an asset, equipment, machine for various types of work orders and different cost elements such as contract resource, employee resource, standard parts, miscellaneous costs, etc. • User interface to view cost break up between the main equipment and its child • User interface to view detailed history, resources and material utilized for all work orders • User interface for graphical analysis of equipment maintenance cost, down hours etc. • Performs failure analysis by reviewing the frequency of cause for various equipment • Provision to review history of spares usage • Supports tracking of work orders status like completed, in progress etc
Safety & Permit	<ul style="list-style-type: none"> • Comprehensive Work/Safety Permits and linked with work orders • Parameterized validity period • Multiple permits for a work order • Multiple Extensions of permits • Automatic closure of permits after validity period • Specification of Isolations and normalizations • Isolation linkage to work order and permits • Specifications of Tag in tag out • Usage of order to operate (Normalization) and order to close (Isolations)



CONTACT US TODAY:

HOFINSOFT, Inc.
(A wholly owned subsidiary)
34650 US Highway 19 North,
Suite 301
Palm Harbor, FL 34684 (USA)
Tel: 1 800-293 4717
Fax: (727) 239-7575

Hofinsoft Technologies Pvt. Ltd.
G R Complex Annexe, 3rd Floor
408/19, Anna Salai, Nandanam,
Chennai, Tamil Nadu - 600 035 (India)
Tel: +91 44 2432 9524 / 25 / 26
Fax: +91-44-2432 9529
website: www.hofinsoft.com